



Net Energy Injections at Load Busses Quarterly Report

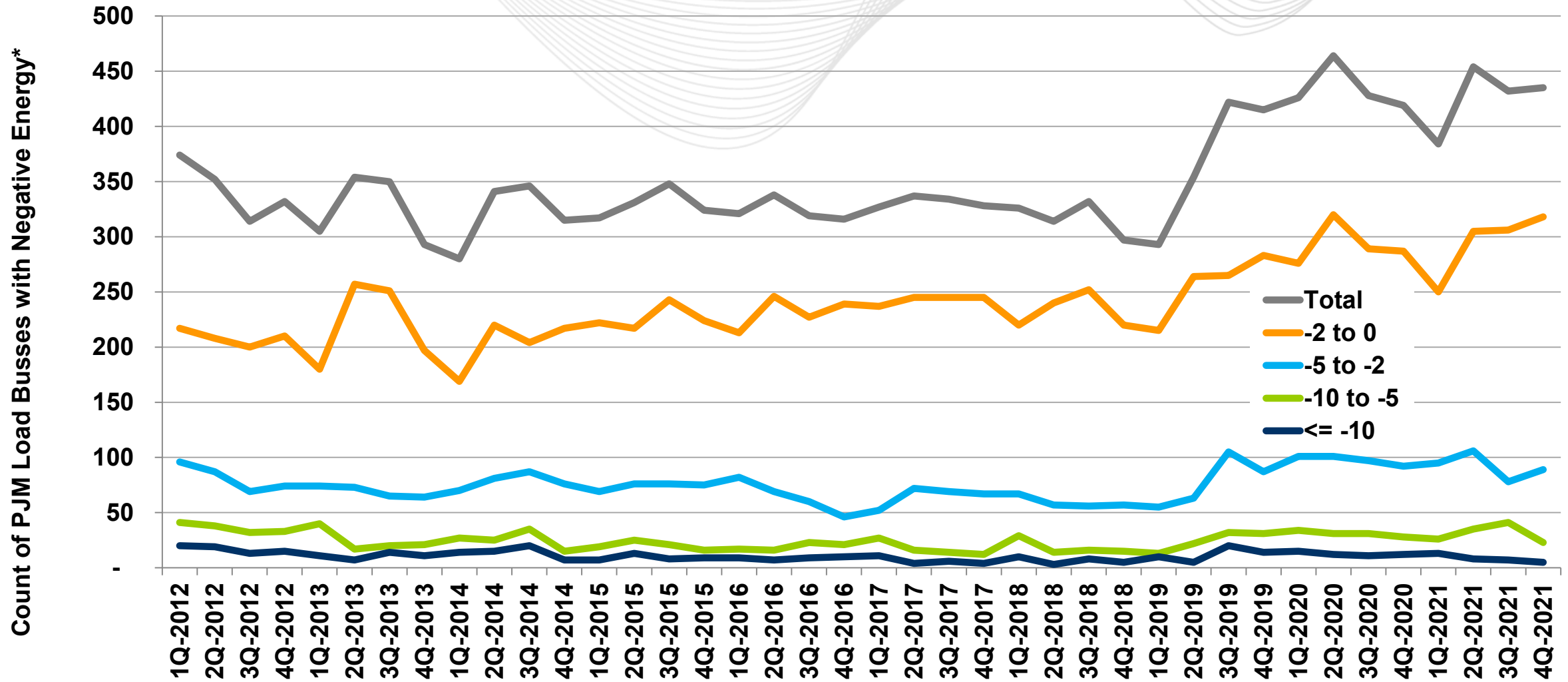
Ken Schuyler,
Manager Renewable Services

Market Implementation Committee
February 9, 2022

- Follow up effort to the Net Energy Metering Senior Task Force (NEMSTF) recommendation
 - PJM will implement a quarterly review to track and trend overall incidents of net energy injections at load busses
- PJM Manual 28 Requirement
 - PJM will assess and trend quarterly the degree of net energy injections at load busses modeled in the PJM network system model (i.e., reverse power flows) in order to detect and correct any modeling issues and to identify any generation in excess of load that appears at a load bus.



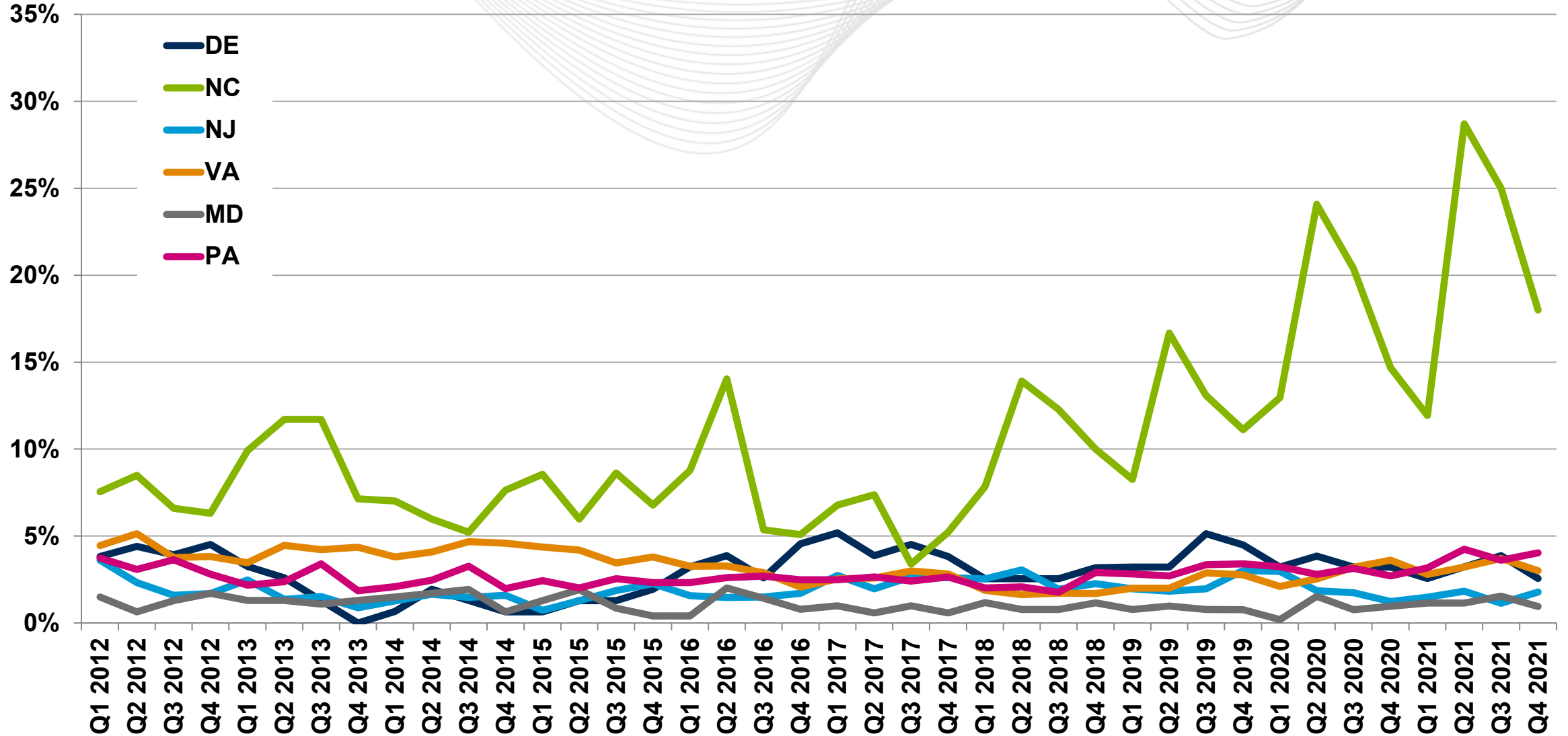
PJM Load Busses with Negative Energy on Average



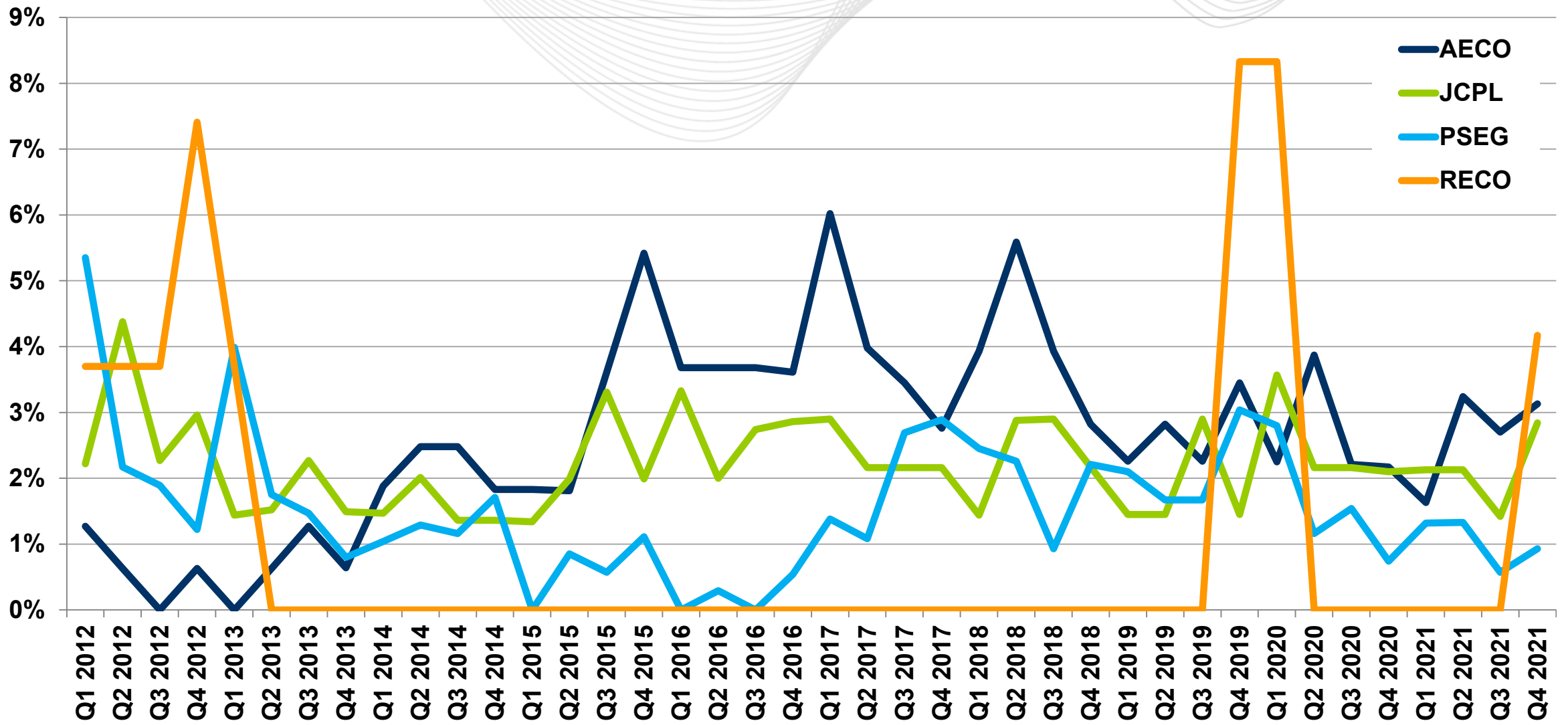
* The total number of PJM load busses is 10,456 as of the most recent model build.



Mid-Atlantic State Load Busses with Negative Energy on Average



New Jersey Load Busses with Negative Energy on Average



- During the ten-year period of tracking this data, the total number of load busses with negative energy has increased 16%, while the total number of PJM load busses in model has increased 39% (slide 3).
- As expected, NC had an decrease in the number of negative load busses in Q4. NC counts have increased in Q2 in each of the past five years, followed by decreases in subsequent quarters. This pattern is attributable to utility-scale solar facilities that are not participating in the PJM Market (slide 4).
- The increase from zero to 4% in the RECO zone in Q4 2021 is attributable to one load bus that solved at a small negative value on average (slide 5).
- PJM continues to track this data to improve its EMS Network Model. To date, trends have not been indicative of an underlying Net Energy Metering issue.

SME:
Ken Schuyler,
Ken.Schuyler@pjm.com

Net Energy Injections at Load Busses



Member Hotline

(610) 666 – 8980

(866) 400 – 8980

custsvc@pjm.com