



2022 Day Ahead Scheduling Reserve (DASR) Requirement

David Kimmel
Senior Engineer, Performance Compliance
Markets & Reliability Committee
November 17, 2021

DASR Req. = LFE + FOR Components

- Time Period Winter 2018 through Fall 2021

Load Forecast Error (LFE) Component

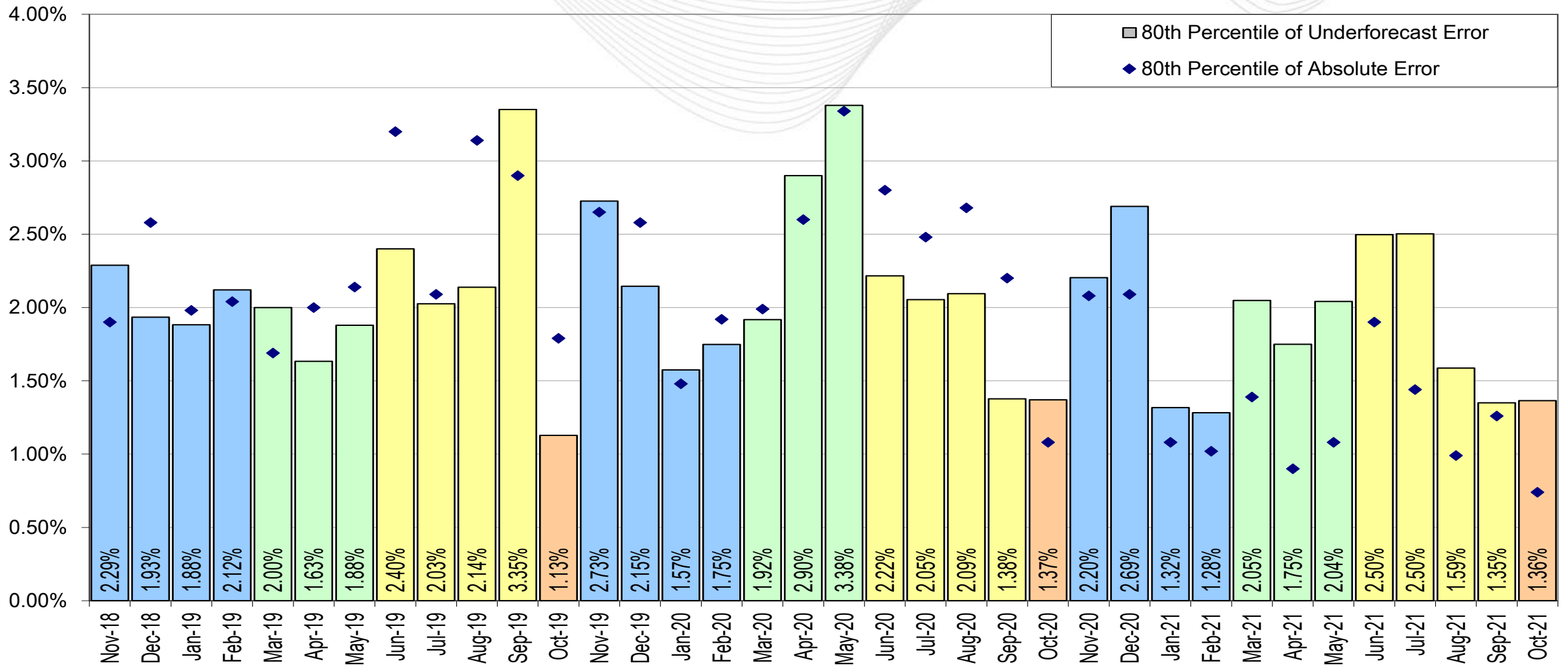
- 3 year average of Under forecasted LFE

Forced Outage Rate (FOR) Component

- 3 year average of eDART Forced Outages, submitted after D-1 18:00, effective after D 8:00 ending before D 20:00

Season	Load Forecast Error Component 80th Percentile Absolute Error				Forced Outage Rate Component All Forced Outage Tickets				Day Ahead Scheduling
	2019	2020	2021	Rollup	2019	2020	2021	Rollup	Req.
Winter	2.06%	2.05%	1.87%	1.99%	2.81%	2.19%	2.50%	2.50%	4.49%
Spring	1.84%	2.73%	1.95%	2.17%	2.24%	1.71%	2.35%	2.10%	4.27%
Summer	2.48%	1.94%	1.98%	2.13%	2.43%	2.34%	2.73%	2.50%	4.63%
Fall	1.13%	1.37%	1.36%	1.29%	2.08%	2.38%	2.12%	2.20%	3.48%
Annual				2.03%				2.38%	4.40%

- 2022 LFE component is 2.03% (down 0.13%)
- 2022 FOR component is 2.38% (down 0.21%)
- Final 2022 DASR Requirement is 4.40%



- 2021 DASR requirement was 4.78%
- Final 2022 DASR requirement is 4.40%
- Small decrease in Load Forecast Error (LFE) & small decrease in Forced Outage Rate (FOR) component
- Review in October 2021 OC and MRC
- Endorsement in November 2021 OC and MRC
- Implement on January 1, 2022
- Final 2022 DASR value will be incorporated into Manual 13 Changes

- The 2022 DASR requirement will be in effect through September 30, 2022
- On October 1, 2022 the DASR will be replaced with Secondary Reserve

SME/Presenter:
David Kimmel,
David.Kimmel@pjm.com

**2022 Day Ahead Scheduling Reserve (DASR)
Requirement**



Member Hotline

(610) 666 – 8980

(866) 400 – 8980

custsvc@pjm.com