



# Manual 21B - Revision 1

## Dual Fuel Class Definitions

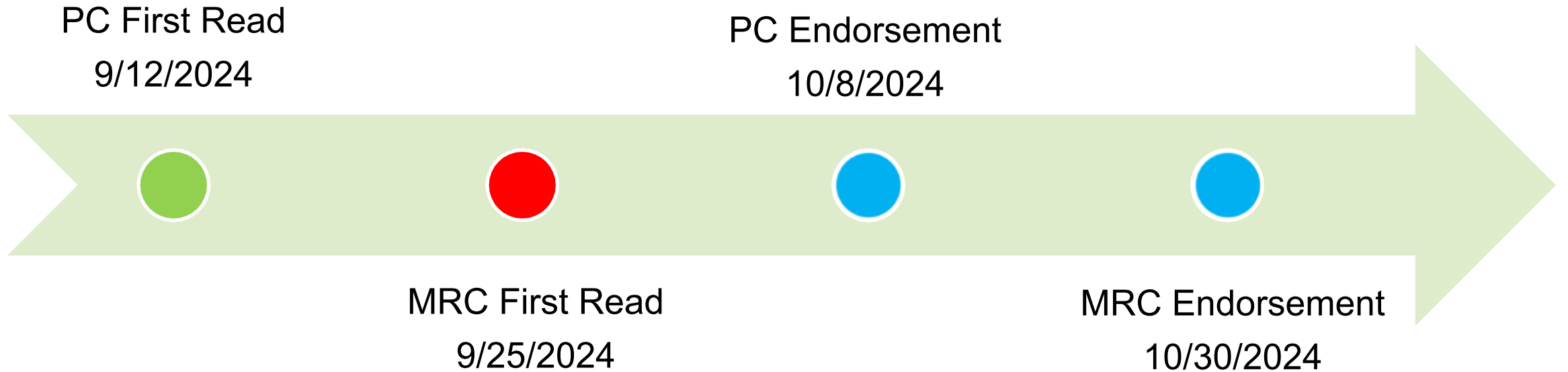
Joshua Bruno

Resource Adequacy Planning

Markets and Reliability Committee

September 25, 2024

- FERC’s acceptance of Docket No. ER24-1988-000 (07/10/2024)
  - Definitions for “Gas Combined Cycle Dual Fuel Class” and “Gas Combustion Turbine Dual Fuel Class” were amended to allow resources that are capable of starting independently using onsite sources to qualify in the respective dual fuel class
- M21B Section 2.4
  - Updated “Gas Combined Cycle Dual Fuel Class” and “Gas Combustion Turbine Dual Fuel Class” definitions to align with the RAA
  - Revised the language regarding the requirements a resource was attesting to so that the language aligns with the new definitions



Facilitator:

Lisa Drauschak,

[Lisa.Drauschak@pjm.com](mailto:Lisa.Drauschak@pjm.com)

Secretary:

David Anders,

[David.Anders@pjm.com](mailto:David.Anders@pjm.com)

SME/Presenter:

Joshua Bruno

[Joshua.Bruno@pjm.com](mailto:Joshua.Bruno@pjm.com)

**PJM Manual 21B – Revision 1  
Dual Fuel Class Definitions**



Member Hotline

(610) 666 – 8980

(866) 400 – 8980

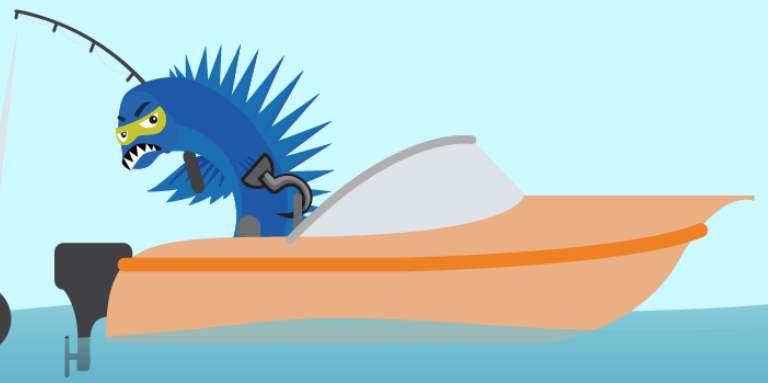
[custsvc@pjm.com](mailto:custsvc@pjm.com)

**PROTECT THE  
POWER GRID**

**THINK BEFORE  
YOU CLICK!**



**BE ALERT TO  
MALICIOUS PHISHING  
EMAILS**



**Report suspicious email activity to PJM.  
Call (610) 666-2244 or email [it\\_ops\\_ctr\\_shift@pjm.com](mailto:it_ops_ctr_shift@pjm.com)**