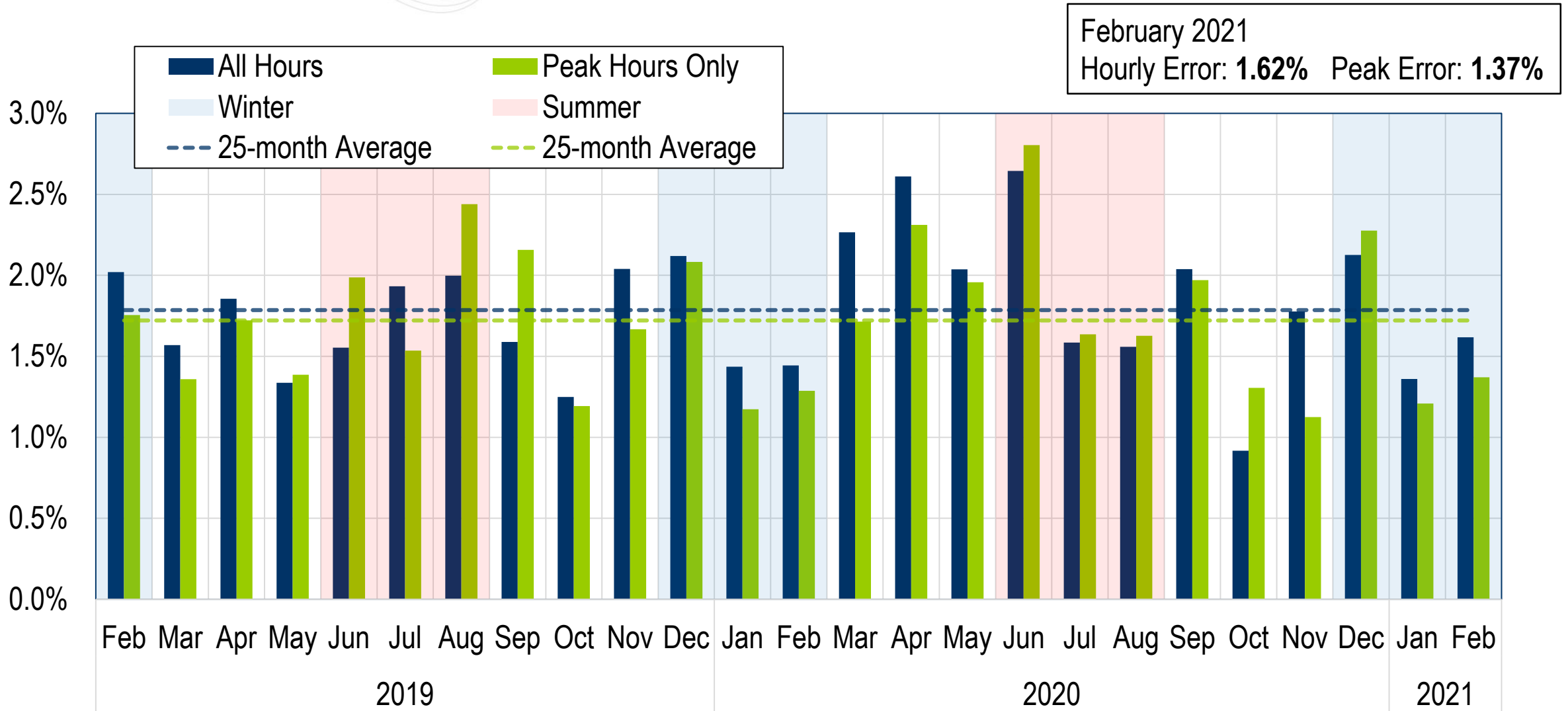




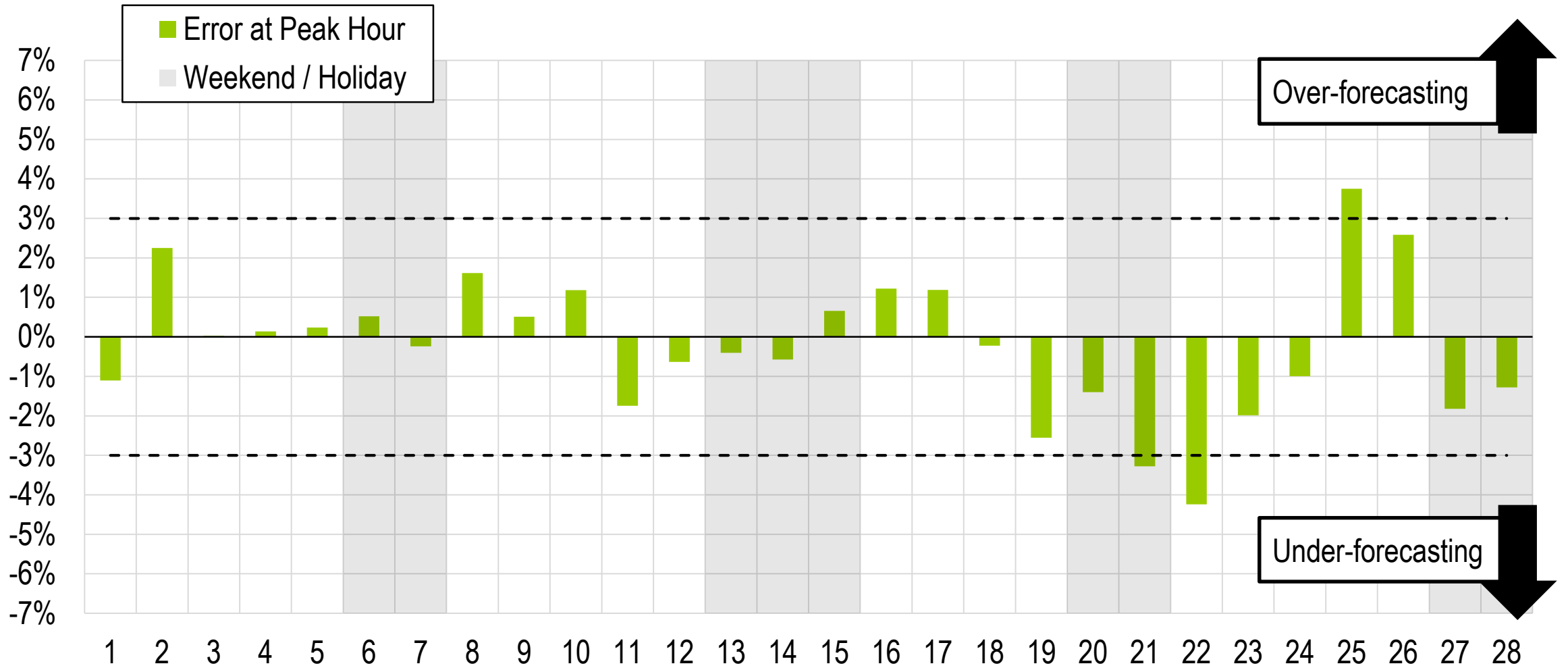
System Operations Report

Stephanie Monzon
Manager, Markets Coordination
Operating Committee
March 11, 2021

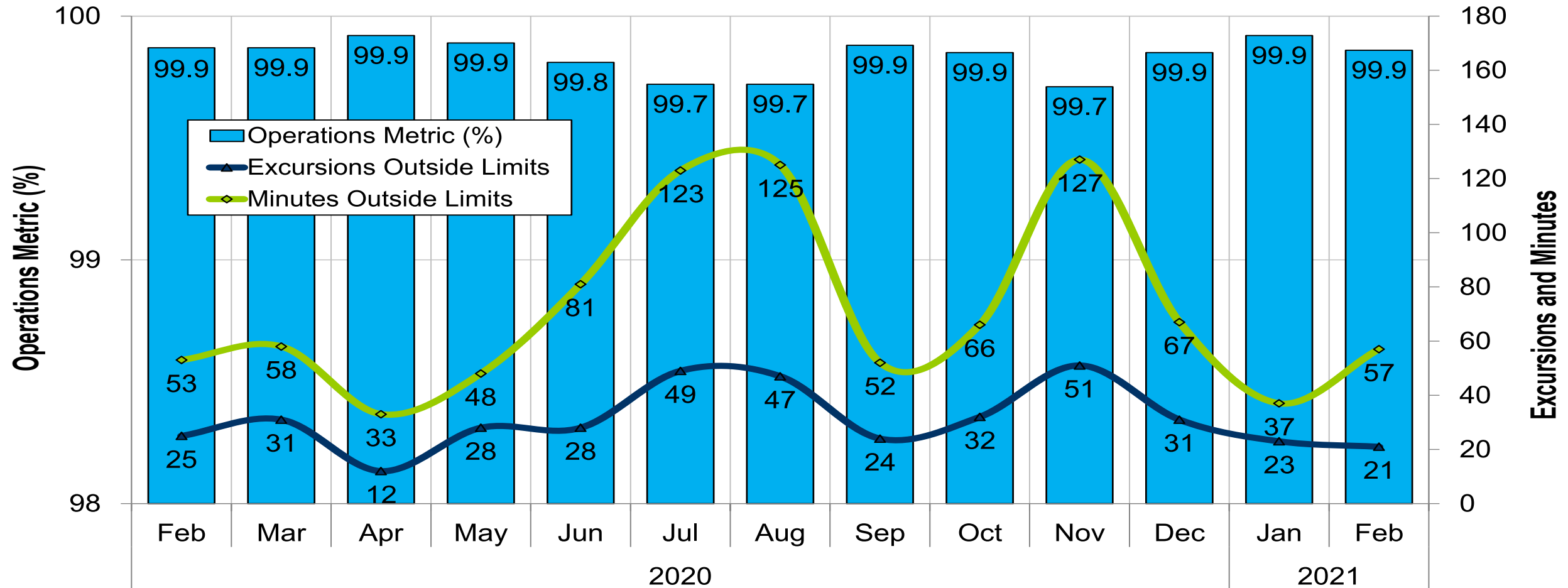
Average Load Forecast Error



Daily Peak Forecast Error (February)



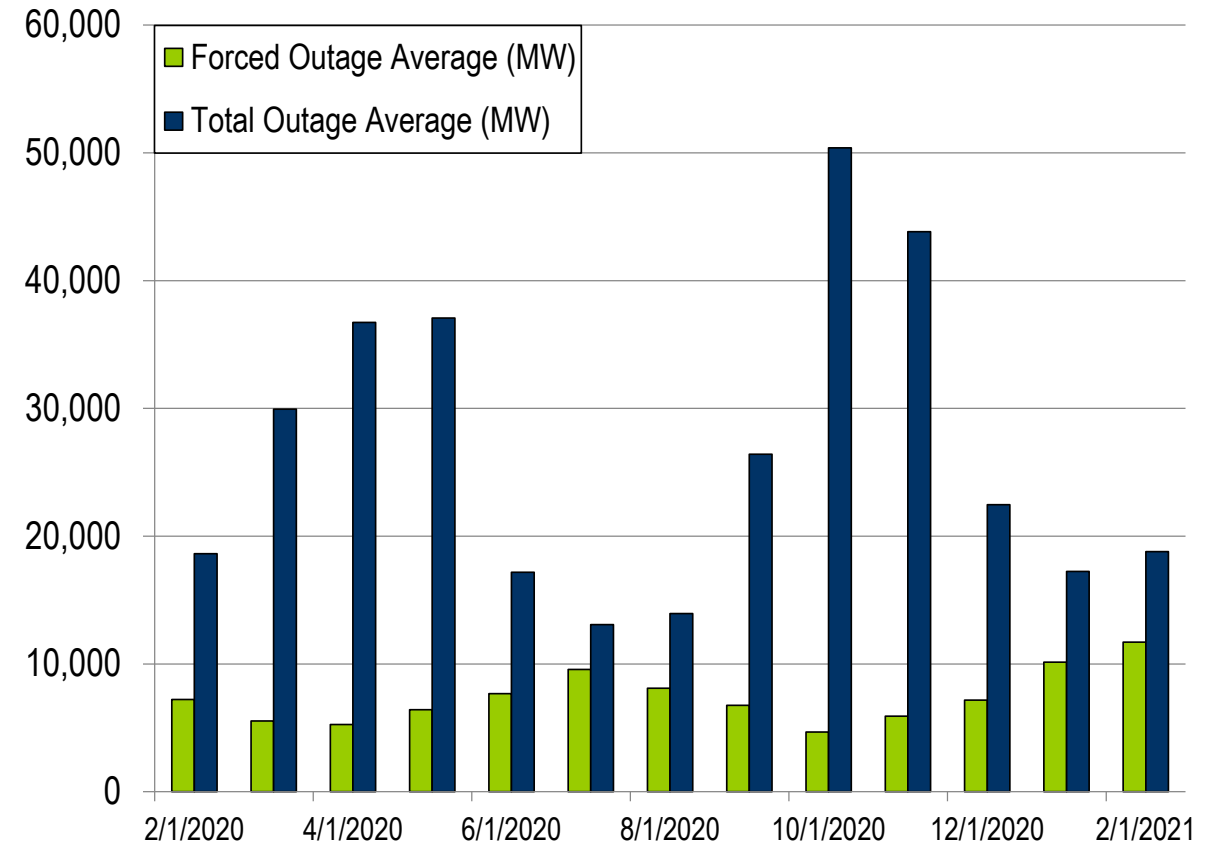
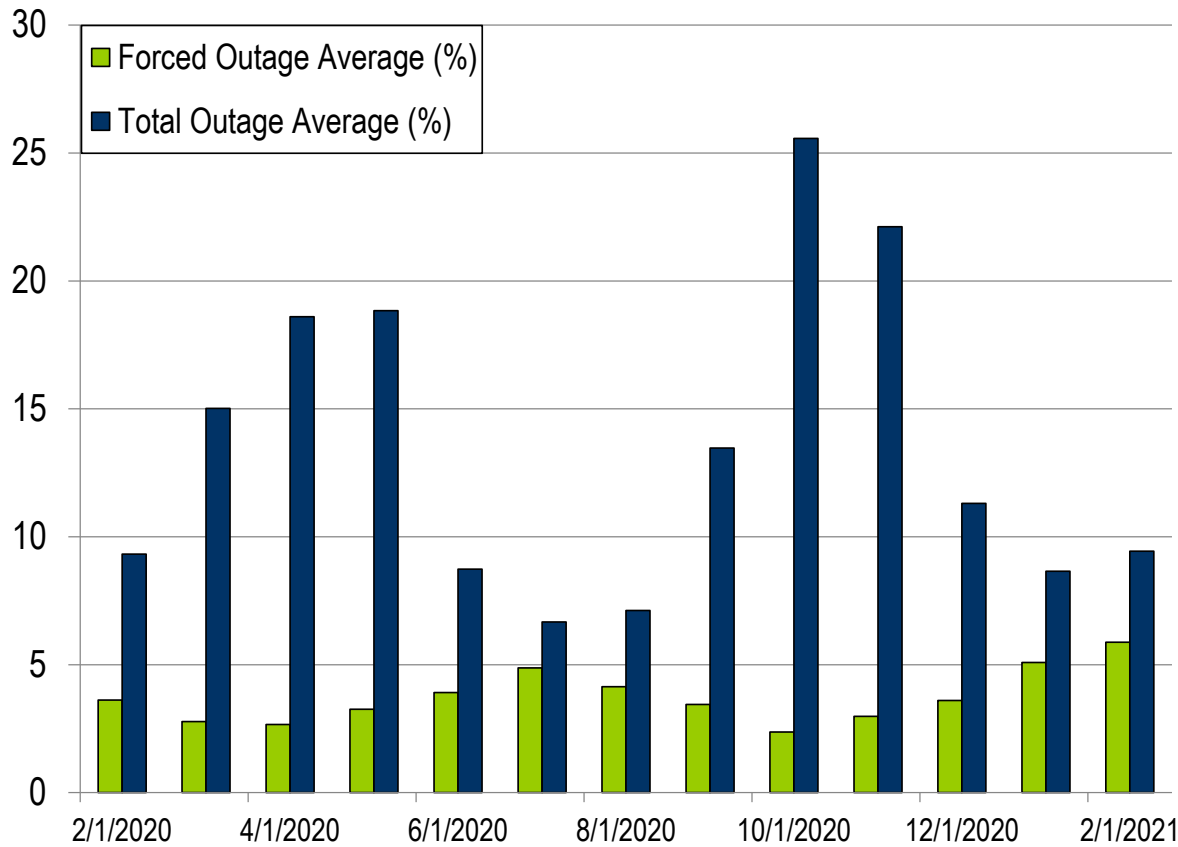
Monthly BAAL Performance Score



PJM's BAAL performance has exceeded the goal of 99% for each month in 2021.

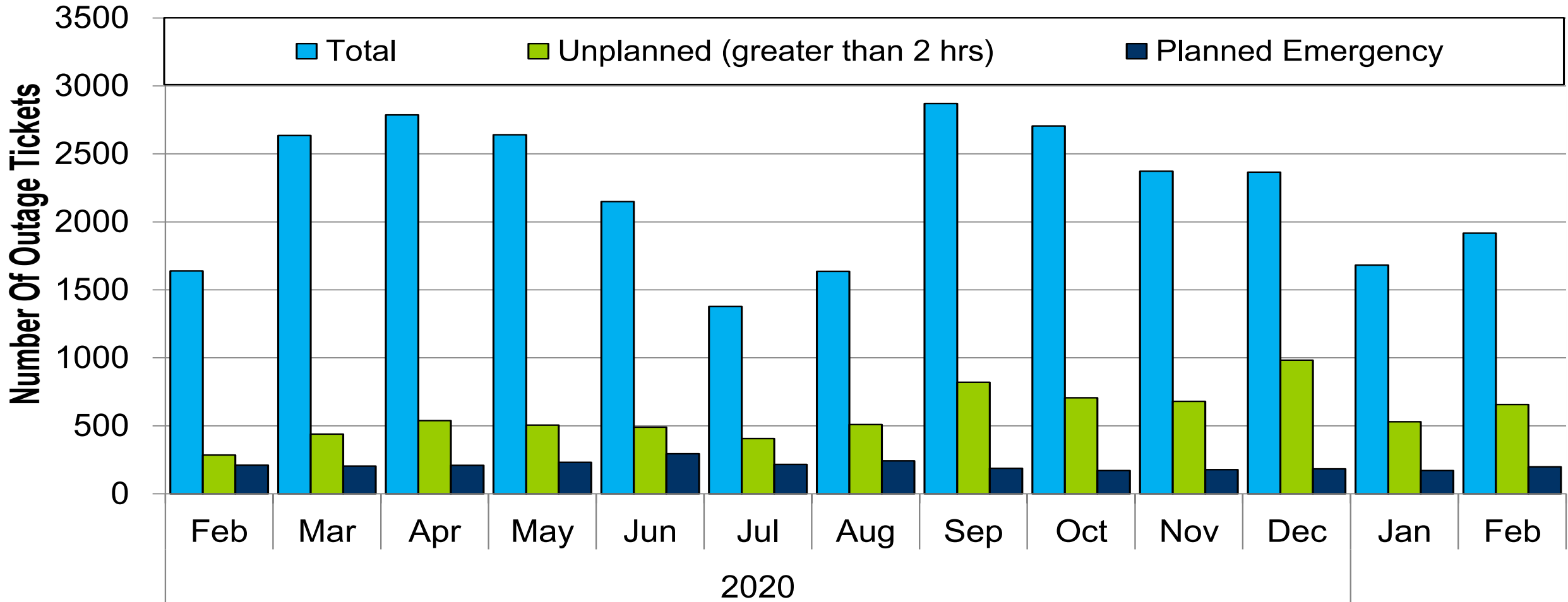
- Zero spinning events in the month of February
- Zero reserve sharing events with the Northeast Power Coordinating Council (NPCC)
- The following Emergency Procedures occurred in February:
 - 35 Post-Contingency Local Load Relief Warnings (PCLLRW)
 - 4 Cold Weather Alerts

RTO Generation Outage Rate - Monthly



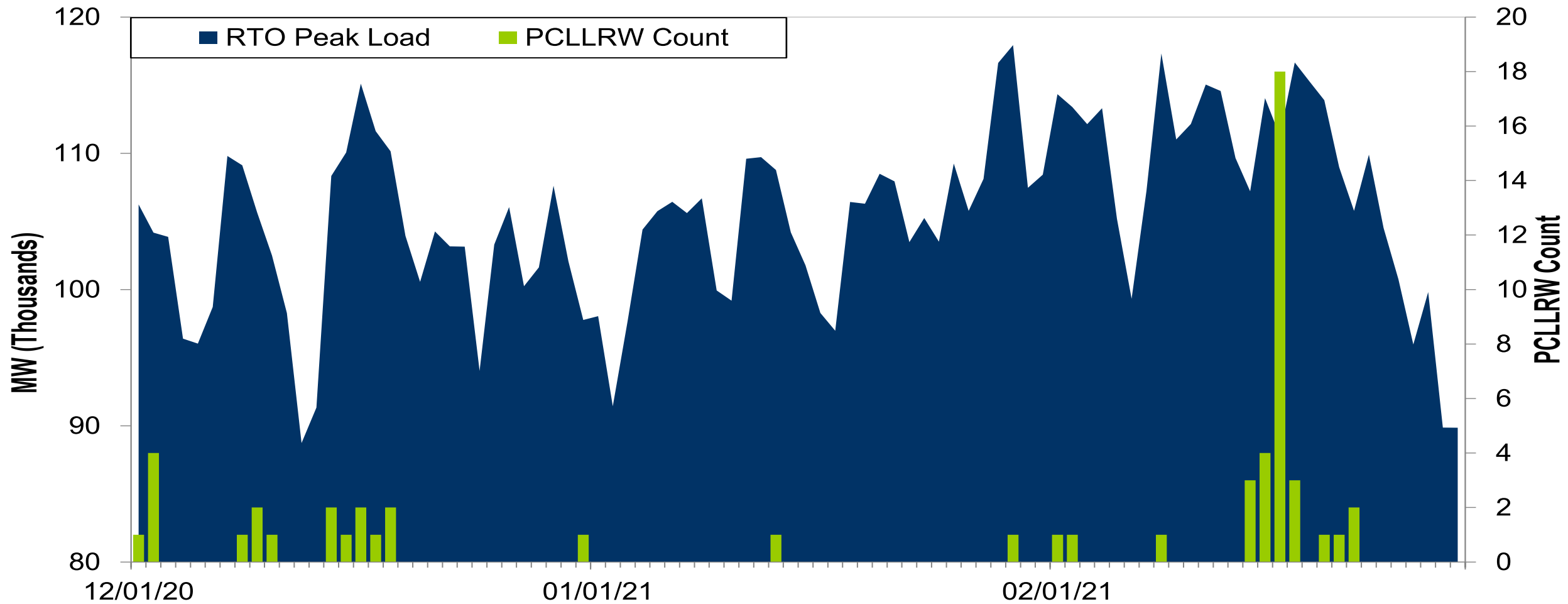
The 13-month average forced outage rate is 3.73% or 7,377 MW.
 The 13-month average total outage rate is 13.49% or 26,662 MW.

2020-2021 Planned Emergency, Unplanned, and Total Outages by Ticket



Note: "Unplanned Outages" include tripped facilities. One tripping event may involve multiple facilities.

PCLLRW Count Vs. Peak Load – Daily Values For 3 Months



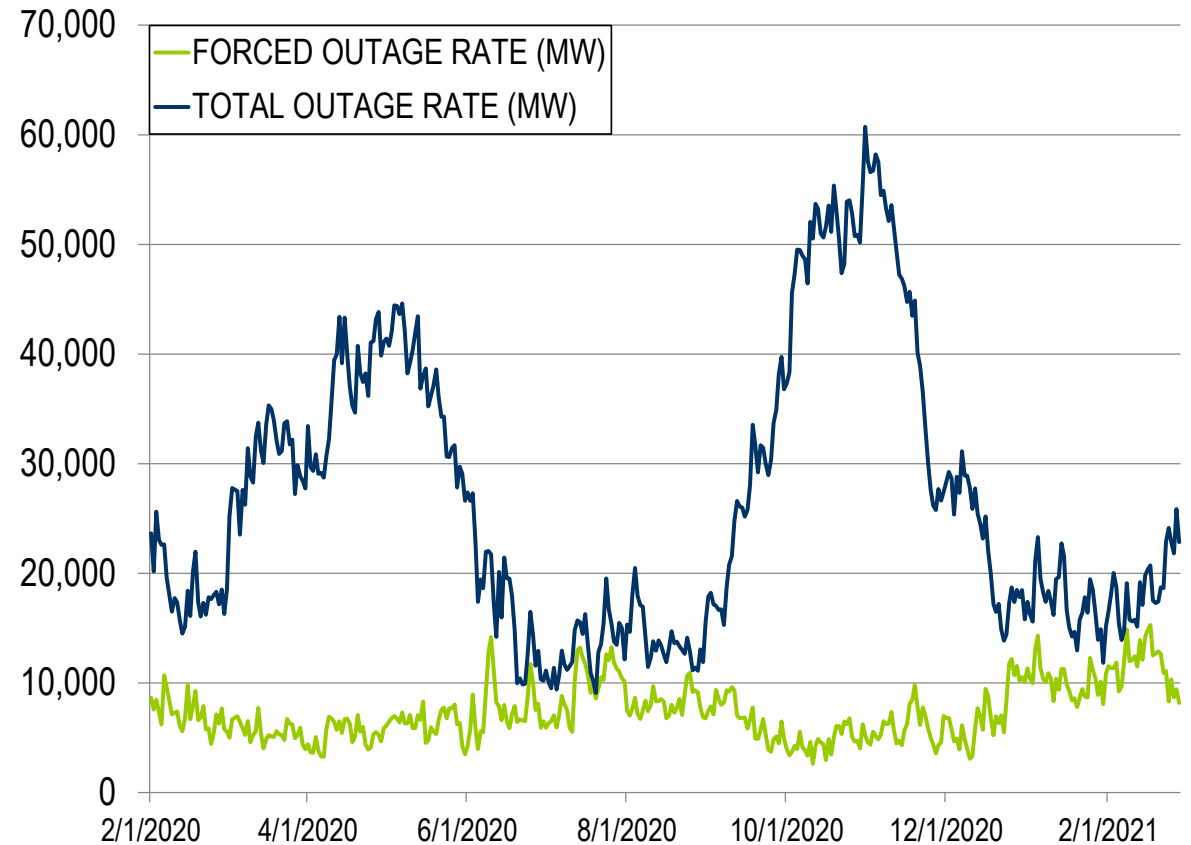
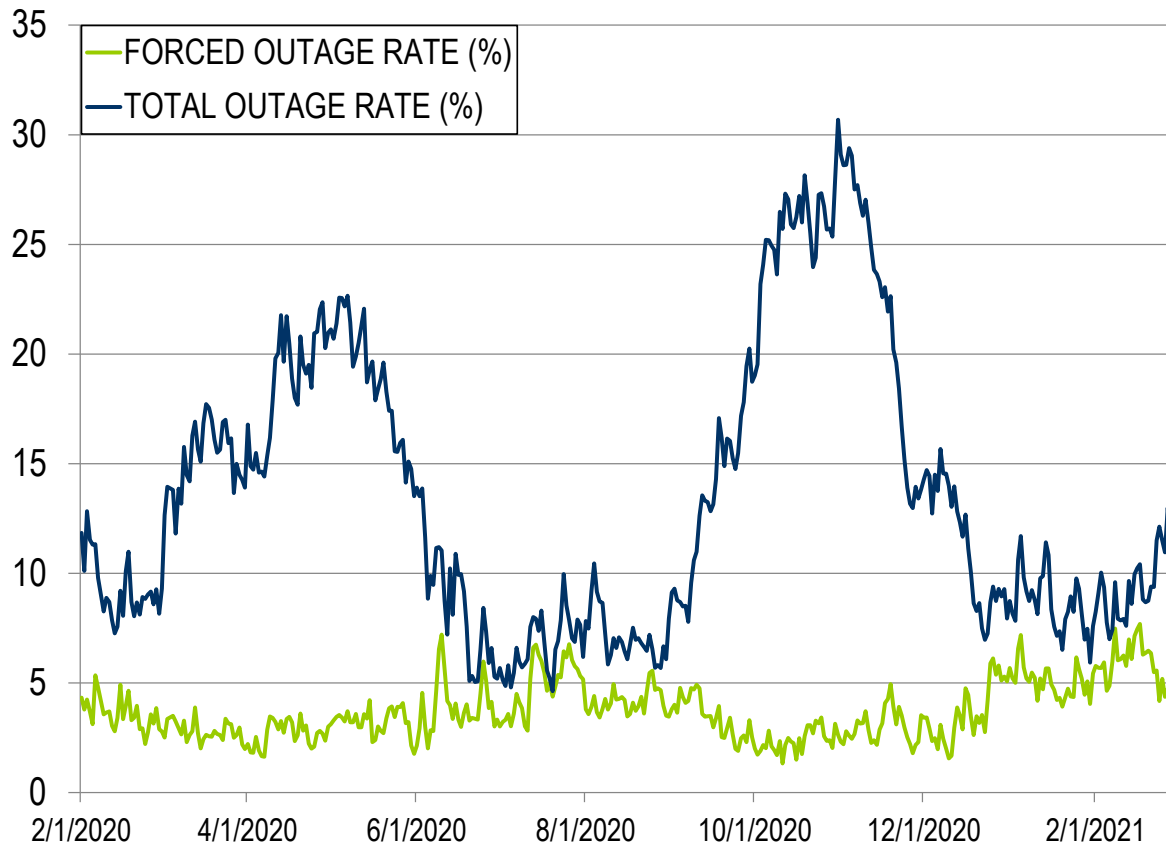
PJM experienced no spinning events during the month of February 2021.

Appendix

Goal Measurement: Balancing Authority ACE Limit (BAAL)

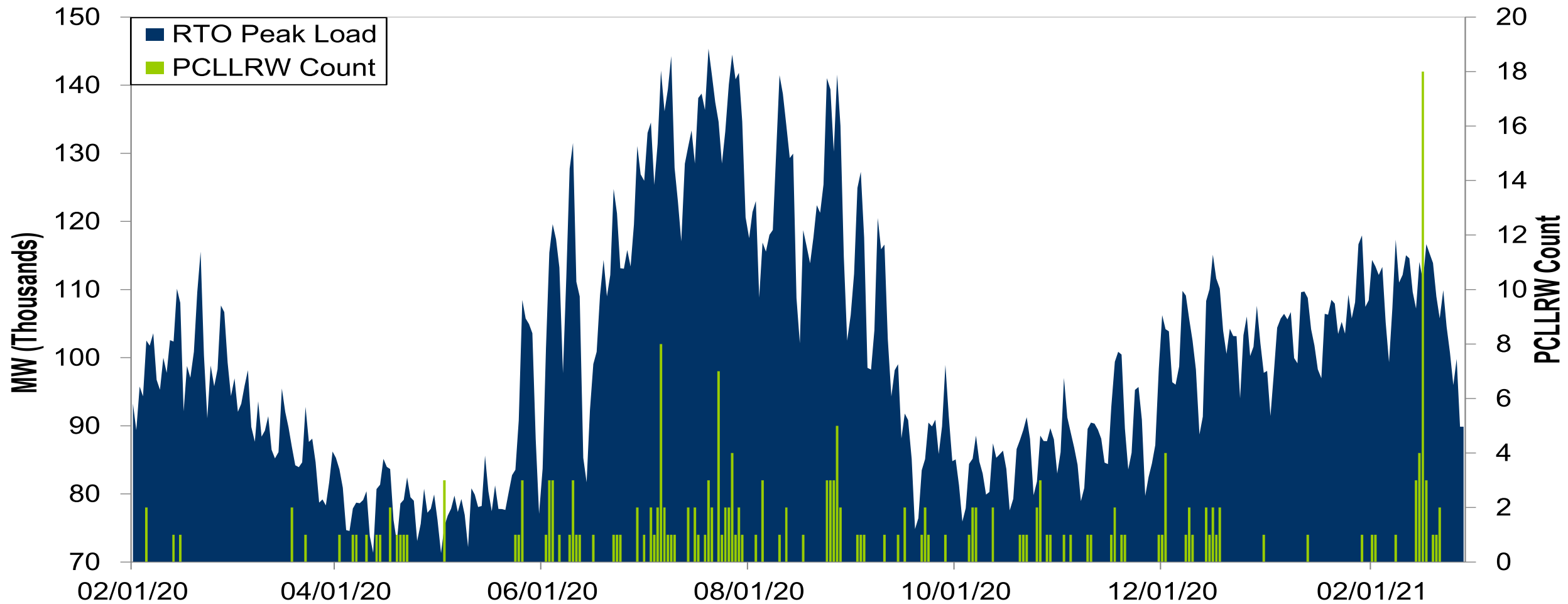
- The purpose of the new BAAL standard is to maintain interconnection frequency within a predefined frequency profile under all conditions (normal and abnormal), to prevent frequency-related instability, unplanned tripping of load or generation, or uncontrolled separation or cascading outages that adversely impact the reliability of the interconnection. NERC requires each balancing authority demonstrate real-time monitoring of ACE and interconnection frequency against associated limits and shall balance its resources and demands in real time so that its Reporting ACE does not exceed the BAAL ($BAAL_{LOW}$ or $BAAL_{HIGH}$) for a continuous time period greater than 30 minutes for each event.
- PJM directly measures the total number of BAAL excursions in minutes compared to the total number of minutes within a month. PJM has set a target value for this performance goal at 99% on a daily and monthly basis. In addition, current NERC rules limit the recovery period to no more than 30 minutes for a single event.

RTO Generation Outage Rate - Daily



The 13-month average forced outage rate is 3.73% or 7,377 MW.
 The 13-month average total outage rate is 13.49% or 26,662 MW.

PCLLRW Count Vs. Peak Load – Daily Values For 13 Months



Presenter:
 Stephanie Monzon,
Stephanie.Monzon@pjm.com

System Operations Report



Member Hotline

(610) 666 – 8980

(866) 400 – 8980

custsvc@pjm.com