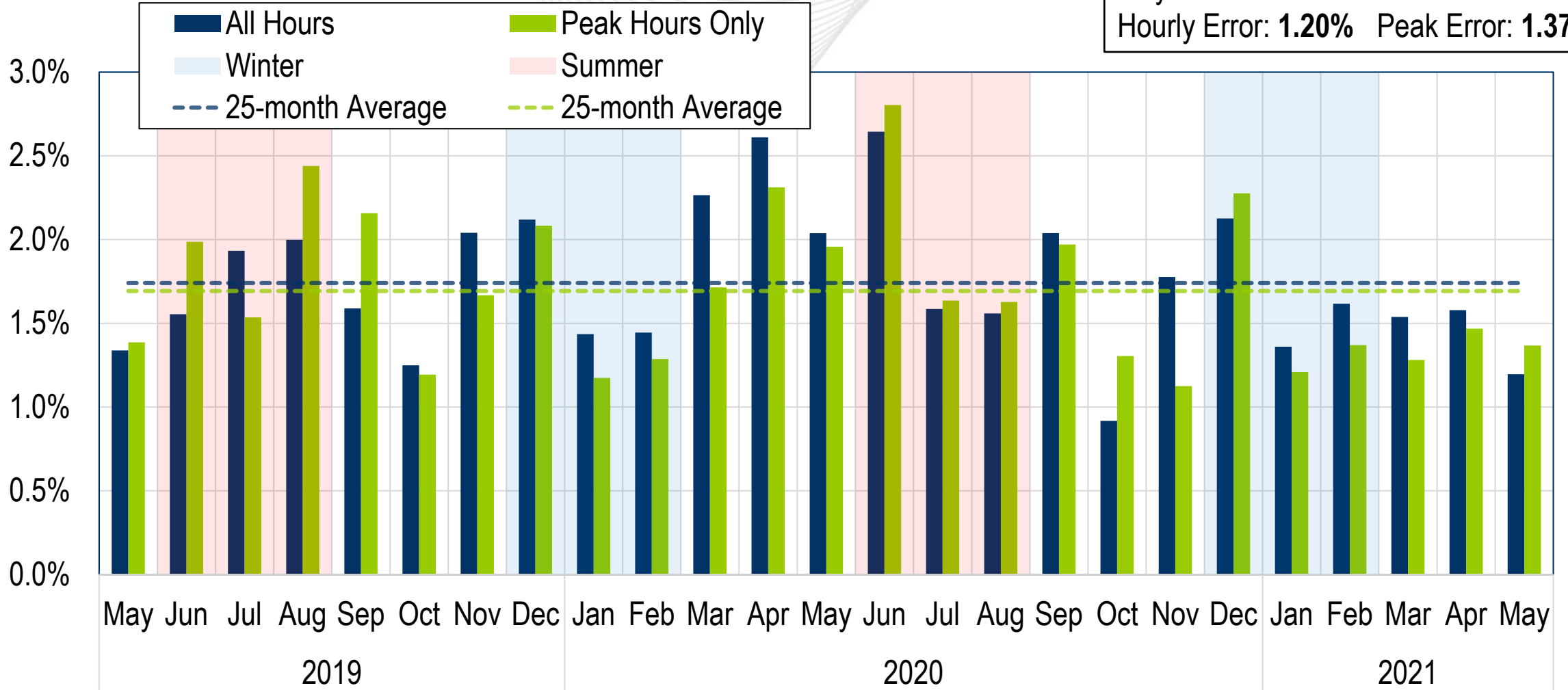




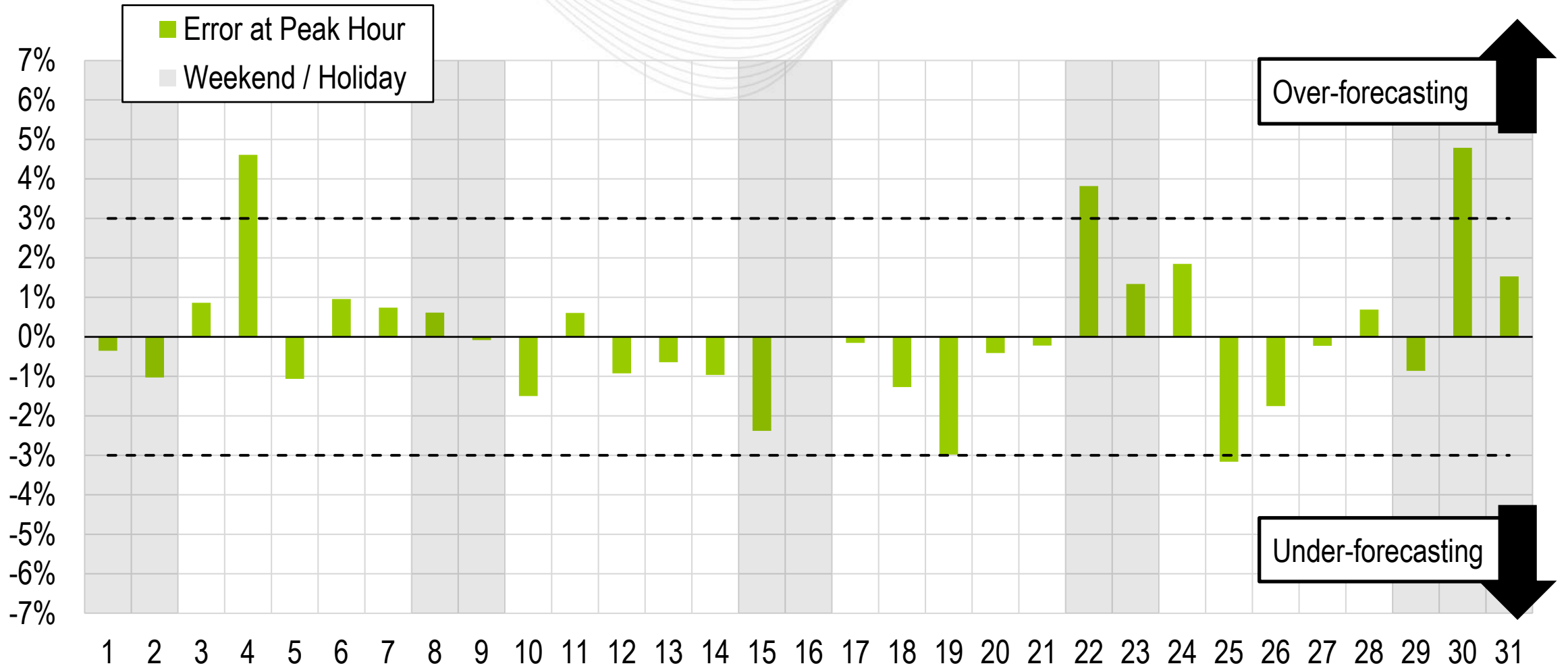
# System Operations Report

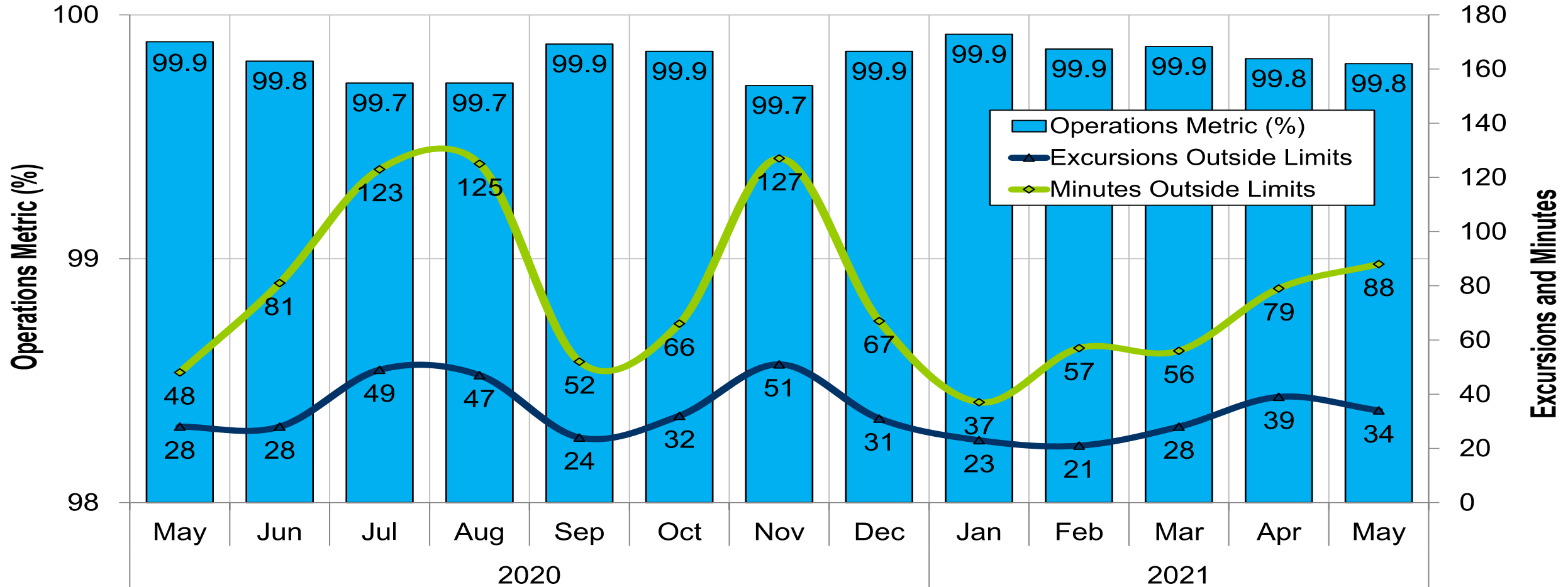
Stephanie Monzon  
Manager, Markets Coordination  
Operating Committee  
June 10, 2021

May 2021  
 Hourly Error: **1.20%** Peak Error: **1.37%**



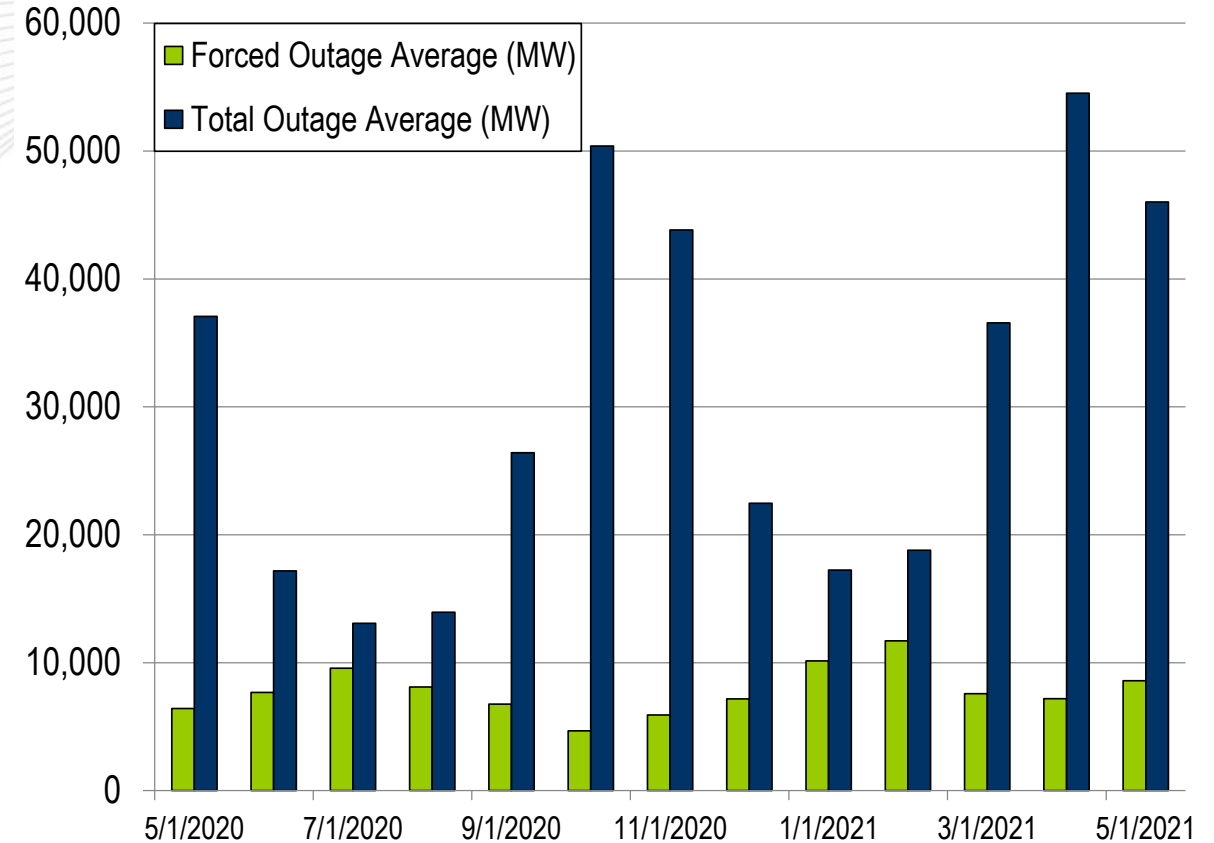
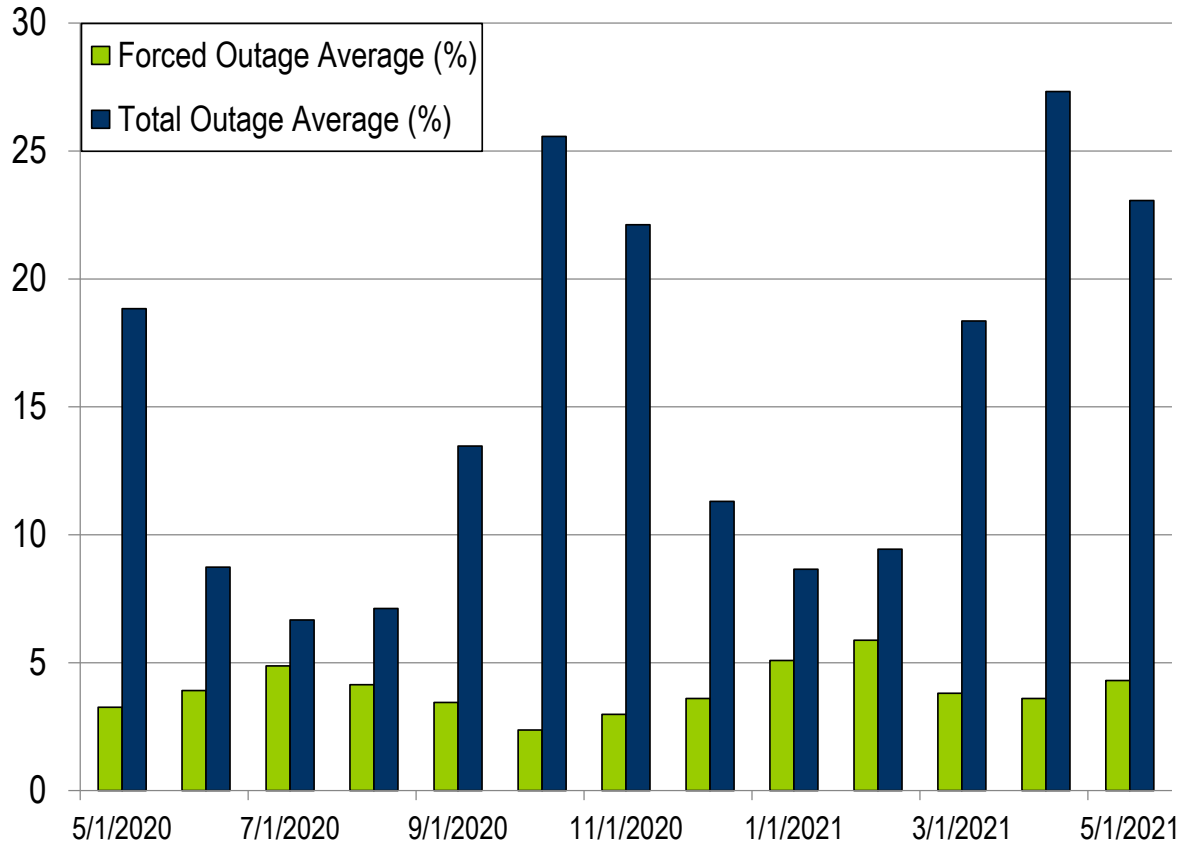
# Daily Peak Forecast Error (May)





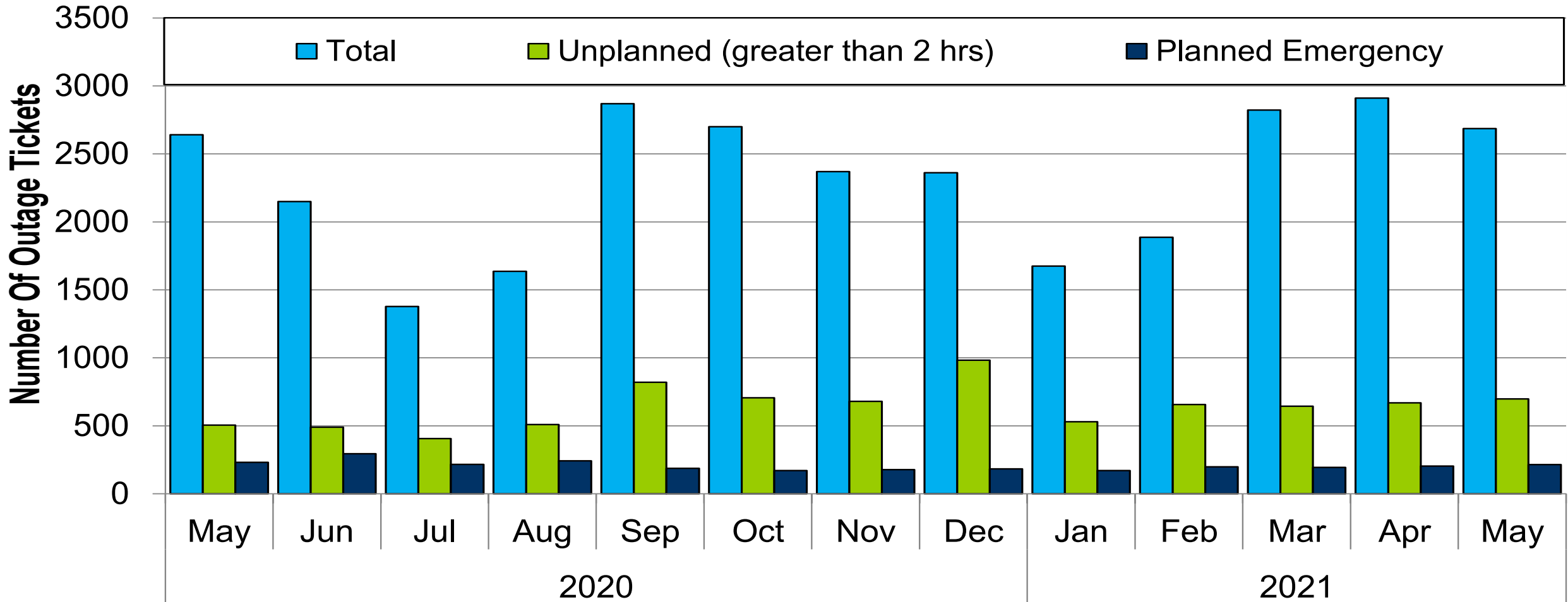
PJM's BAAL performance has exceeded the goal of 99% for each month in 2021.

- One spinning event in the month of May
- Four reserve sharing events with the Northeast Power Coordinating Council (NPCC)
- The following Emergency Procedures occurred in May:
  - 14 Post-Contingency Local Load Relief Warnings (PCLLRW)
  - 1 Hot Weather Alert
  - 1 Geomagnetic Disturbance Warning
  - 6 High System Voltages
  - 4 Shortage Cases Approved



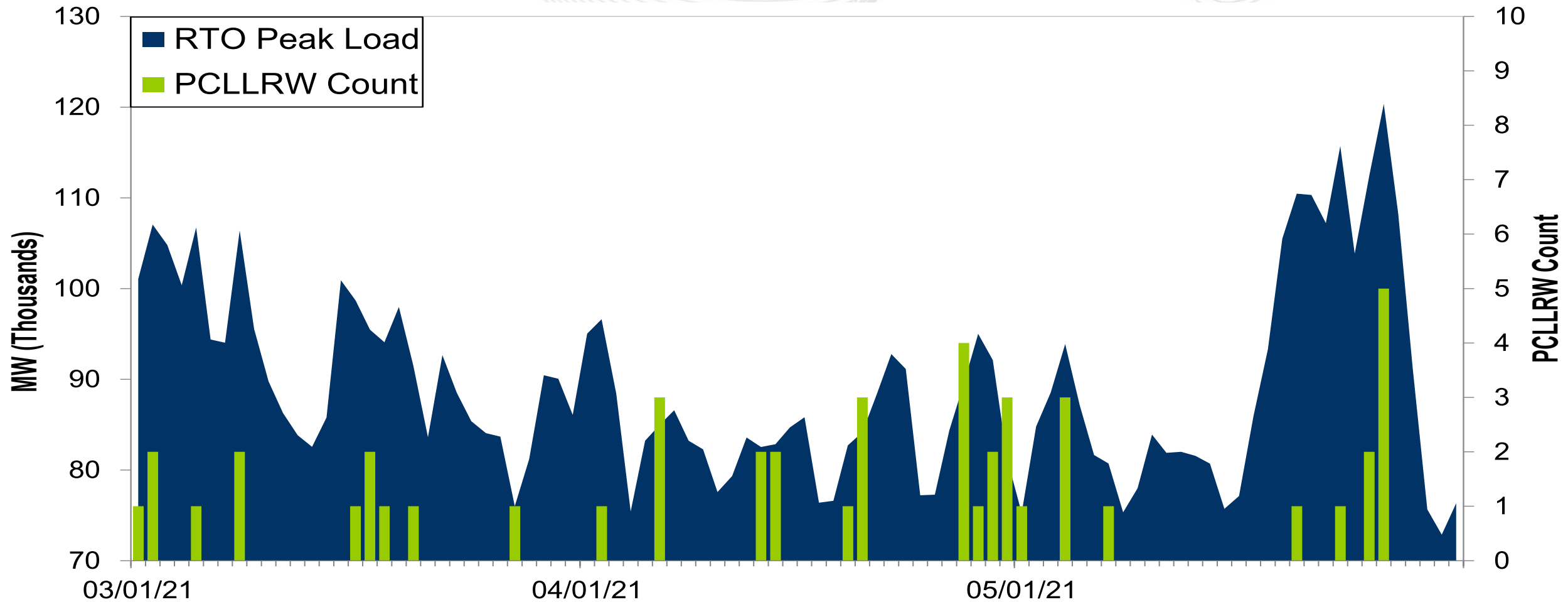
The 13-month average forced outage rate is 3.93% or 7,785 MW.  
 The 13-month average total outage rate is 15.46% or 30,620 MW.

# 2020-2021 Planned Emergency, Unplanned, and Total Outages by Ticket



Note: "Unplanned Outages" include tripped facilities. One tripping event may involve multiple facilities.

# PCLLRW Count Vs. Peak Load – Daily Values For 3 Months





Event	Date	Start Time	End Time	Duration	Region	Tier 1 Estimate (MW)	Tier 1 Response (MW)
1	05/26/21	10:17:34	10:27:35	00:10:01	RTO	1138.4	811.0

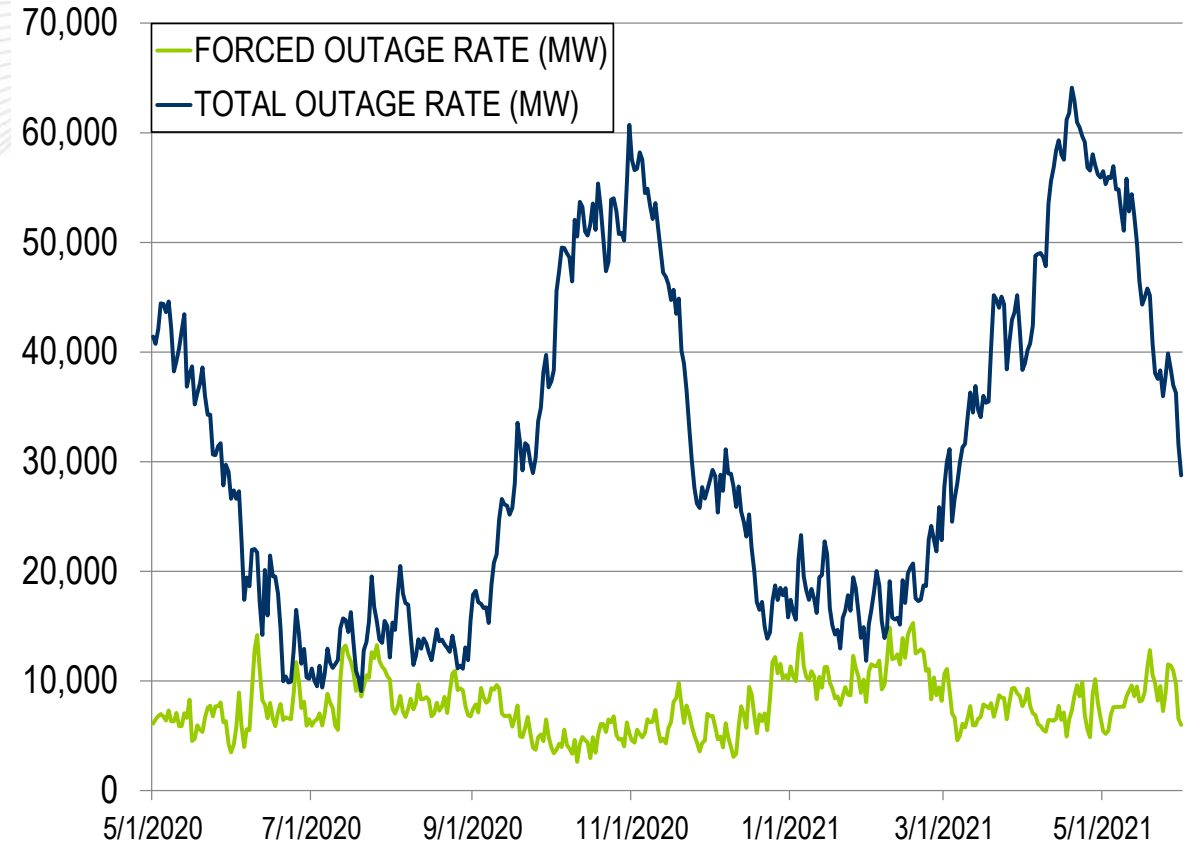
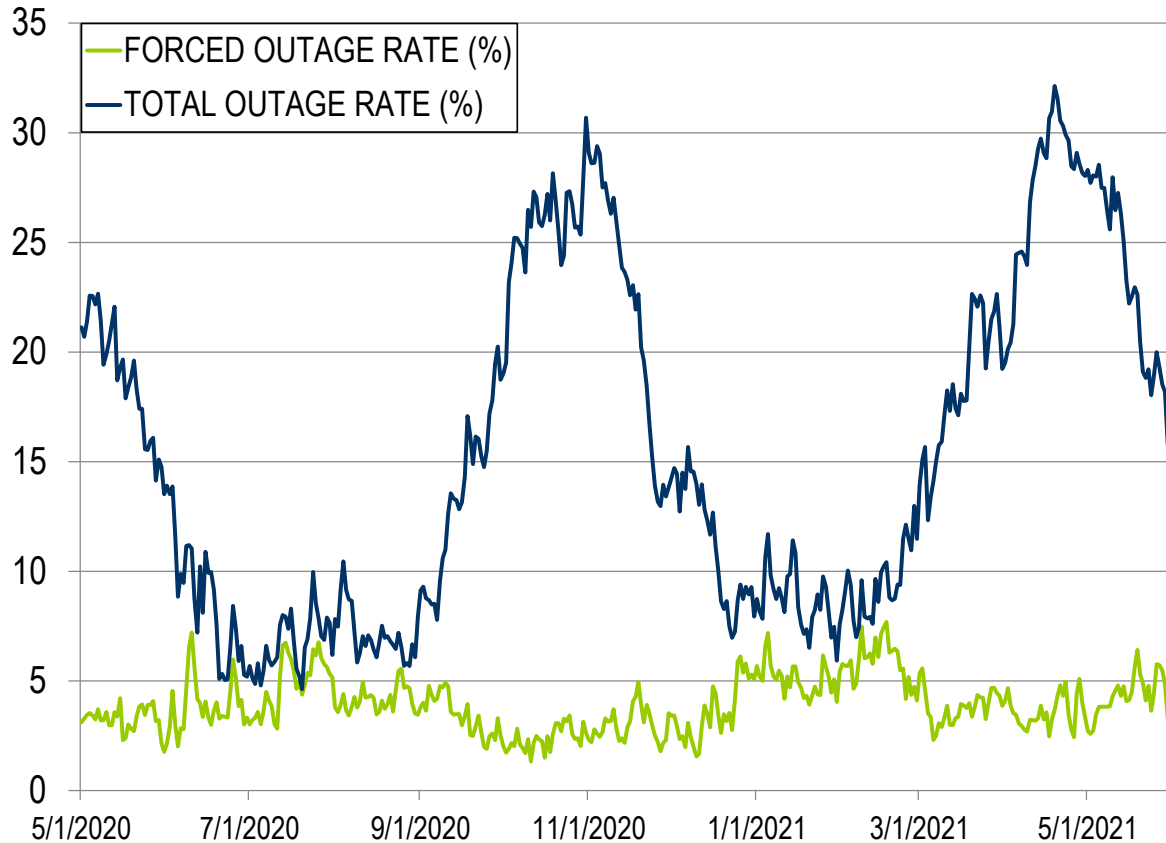
Event	Date	Start Time	End Time	Duration	Region	Tier 2 Assigned (MW)	Tier 2 Response (MW)	Tier 2 Penalty (MW)
1	05/26/21	10:17:34	10:27:35	00:10:01	RTO	685.2	600.2	85.0

\*Tier 2 Response is equal to Tier 2 Assigned for events with duration less than ten minutes

# Appendix

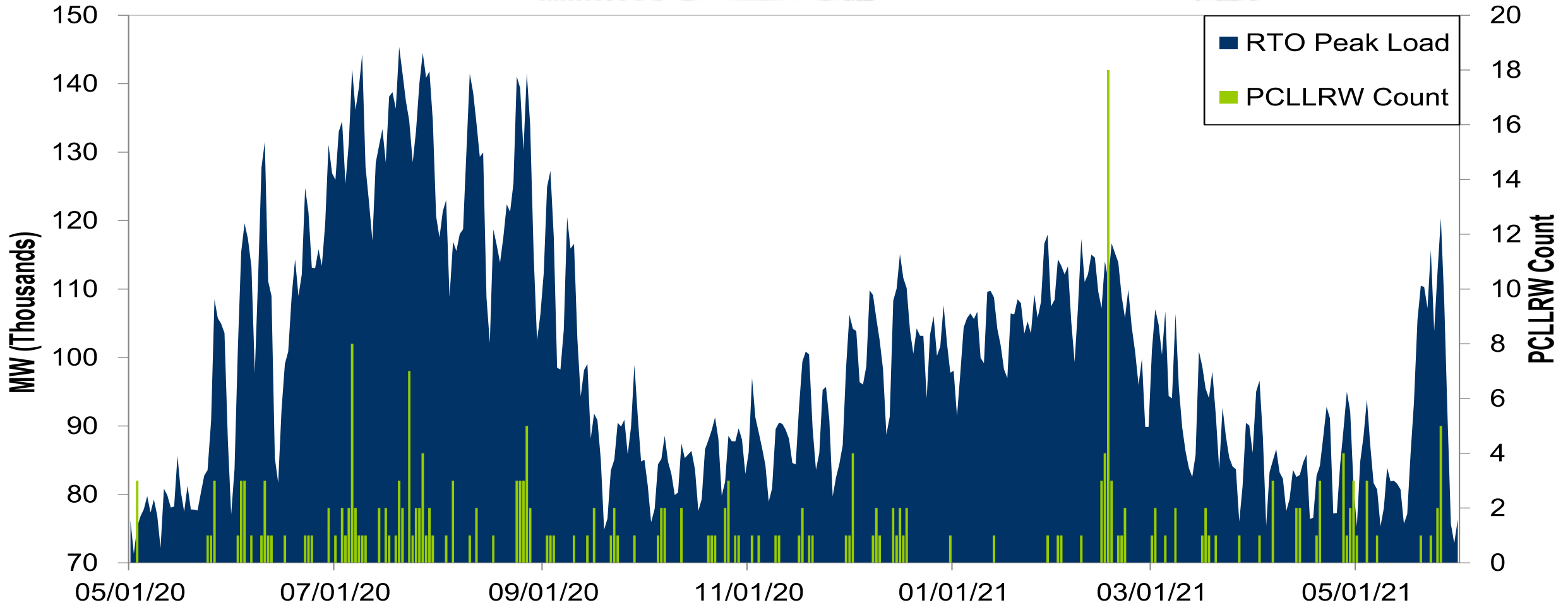
## Goal Measurement: Balancing Authority ACE Limit (BAAL)

- The purpose of the new BAAL standard is to maintain interconnection frequency within a predefined frequency profile under all conditions (normal and abnormal), to prevent frequency-related instability, unplanned tripping of load or generation, or uncontrolled separation or cascading outages that adversely impact the reliability of the interconnection. NERC requires each balancing authority demonstrate real-time monitoring of ACE and interconnection frequency against associated limits and shall balance its resources and demands in real time so that its Reporting ACE does not exceed the BAAL ( $BAAL_{LOW}$  or  $BAAL_{HIGH}$ ) for a continuous time period greater than 30 minutes for each event.
- PJM directly measures the total number of BAAL excursions in minutes compared to the total number of minutes within a month. PJM has set a target value for this performance goal at 99% on a daily and monthly basis. In addition, current NERC rules limit the recovery period to no more than 30 minutes for a single event.



The 13-month average forced outage rate is 3.93% or 7,785 MW.  
 The 13-month average total outage rate is 15.46% or 30,620 MW.

# PCLLRW Count Vs. Peak Load – Daily Values For 13 Months



Presenter:  
Stephanie Monzon,  
[Stephanie.Monzon@pjm.com](mailto:Stephanie.Monzon@pjm.com)

SME:  
David Kimmel,  
[David.Kimmel@pjm.com](mailto:David.Kimmel@pjm.com)

System Operations Report



Member Hotline

(610) 666 – 8980

(866) 400 – 8980

[custsvc@pjm.com](mailto:custsvc@pjm.com)