



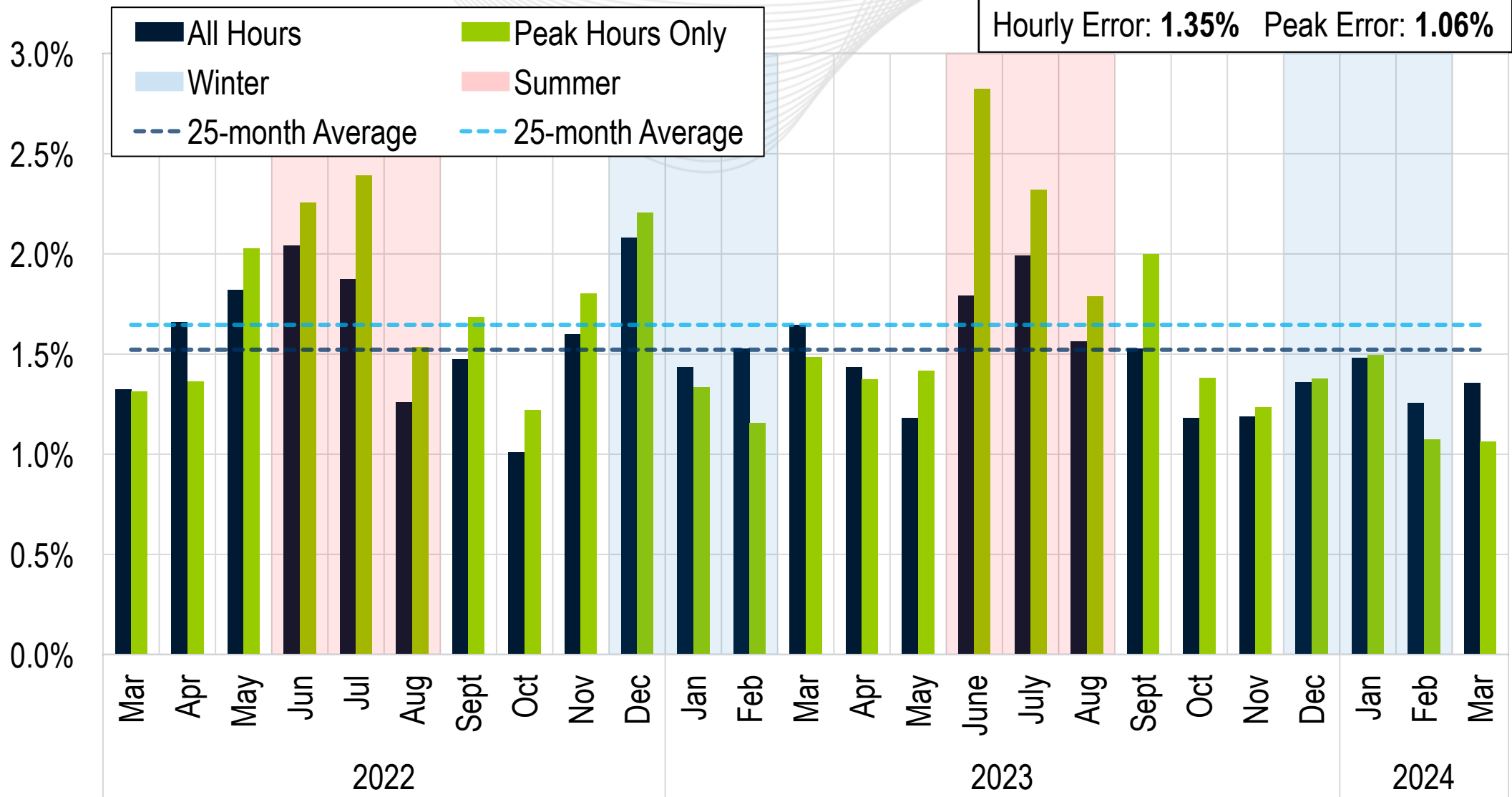
System Operations Report

Stephanie Schwarz
Manager, Markets Coordination
Operating Committee
April 4, 2024



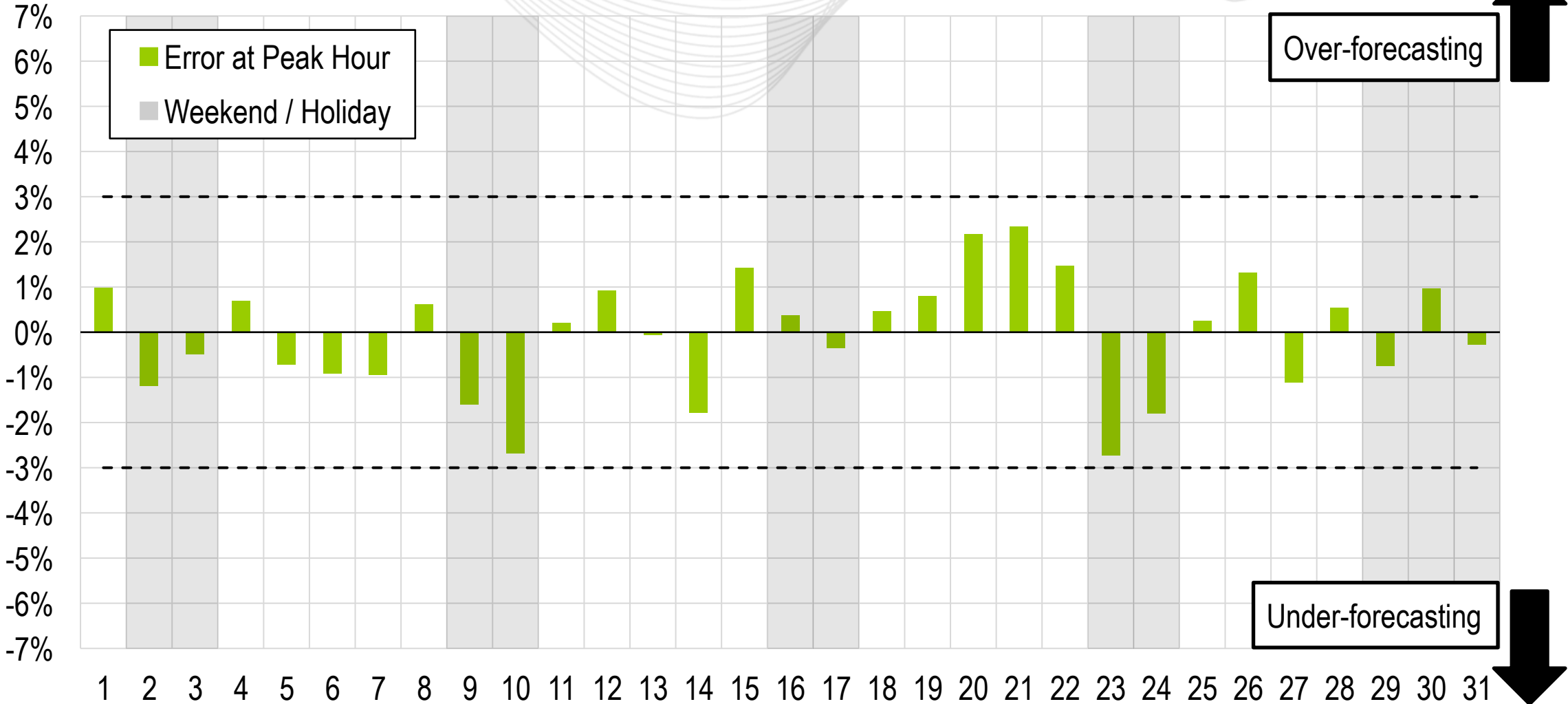
Average Load Forecast Error

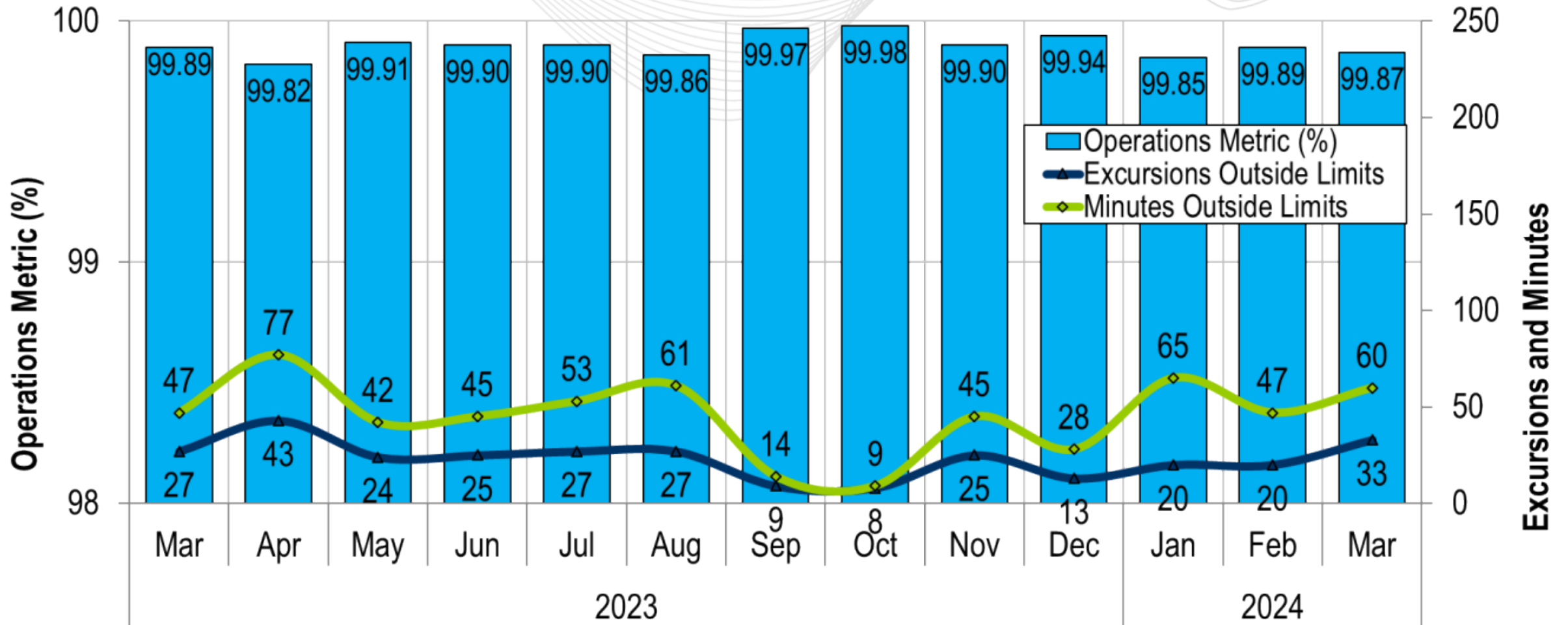
March 2024
Hourly Error: **1.35%** Peak Error: **1.06%**



Daily Peak Forecast Error (March)

18:00 Day Ahead Forecast Error

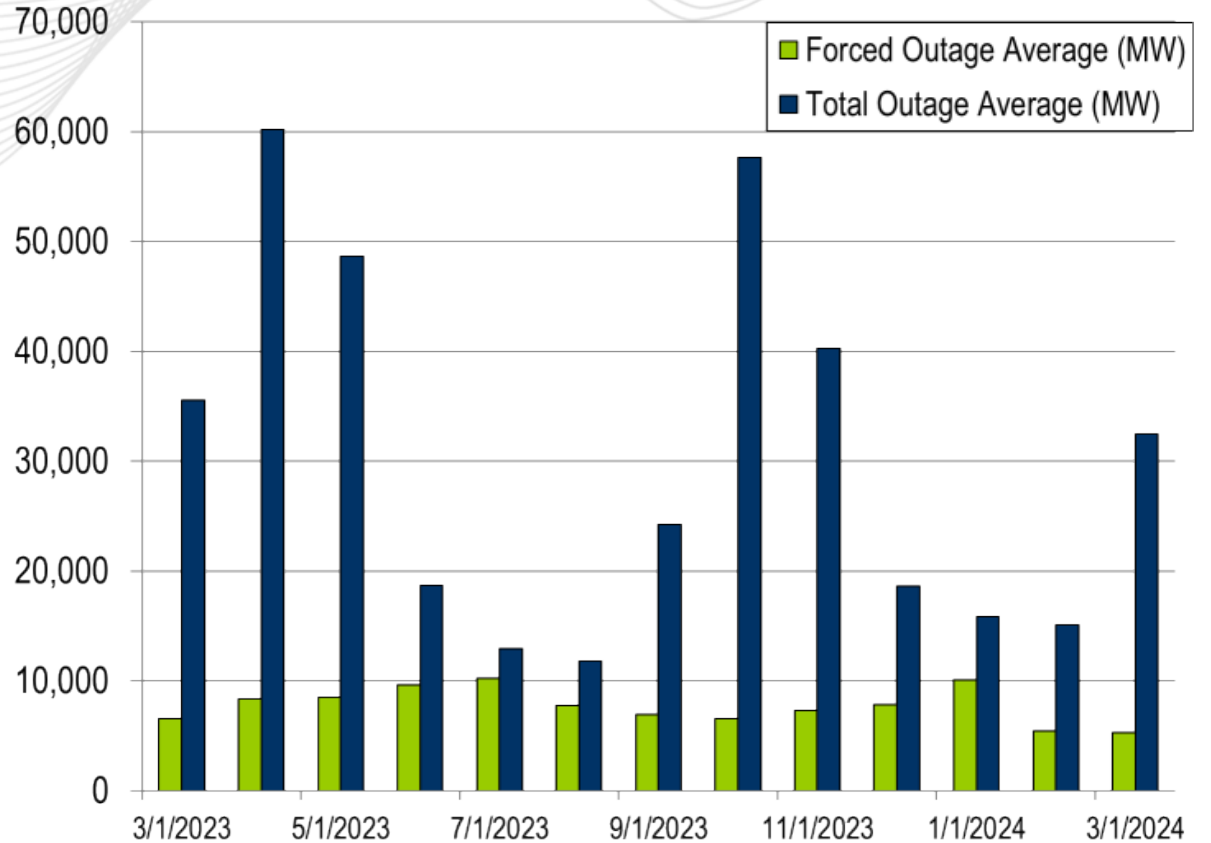
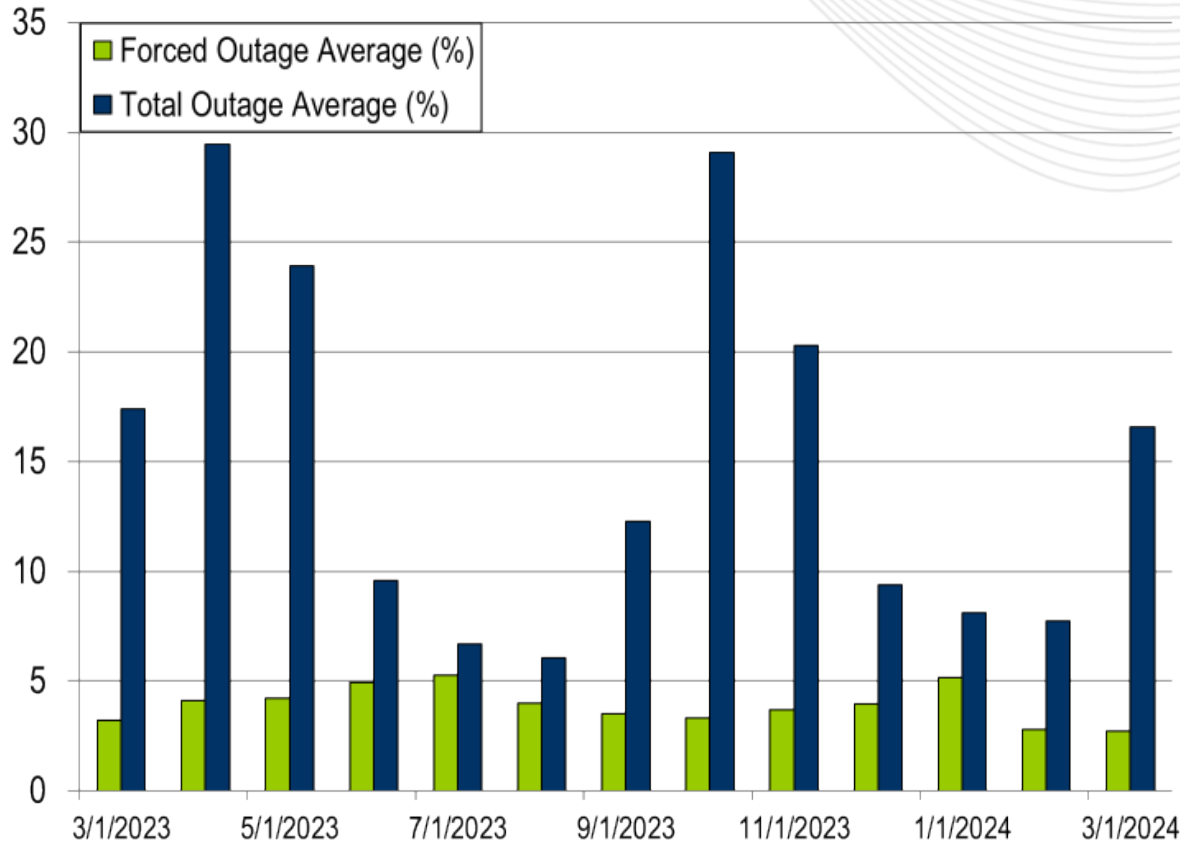




PJM's BAAL performance has exceeded the goal of 99% for each month in 2023 and 2024.

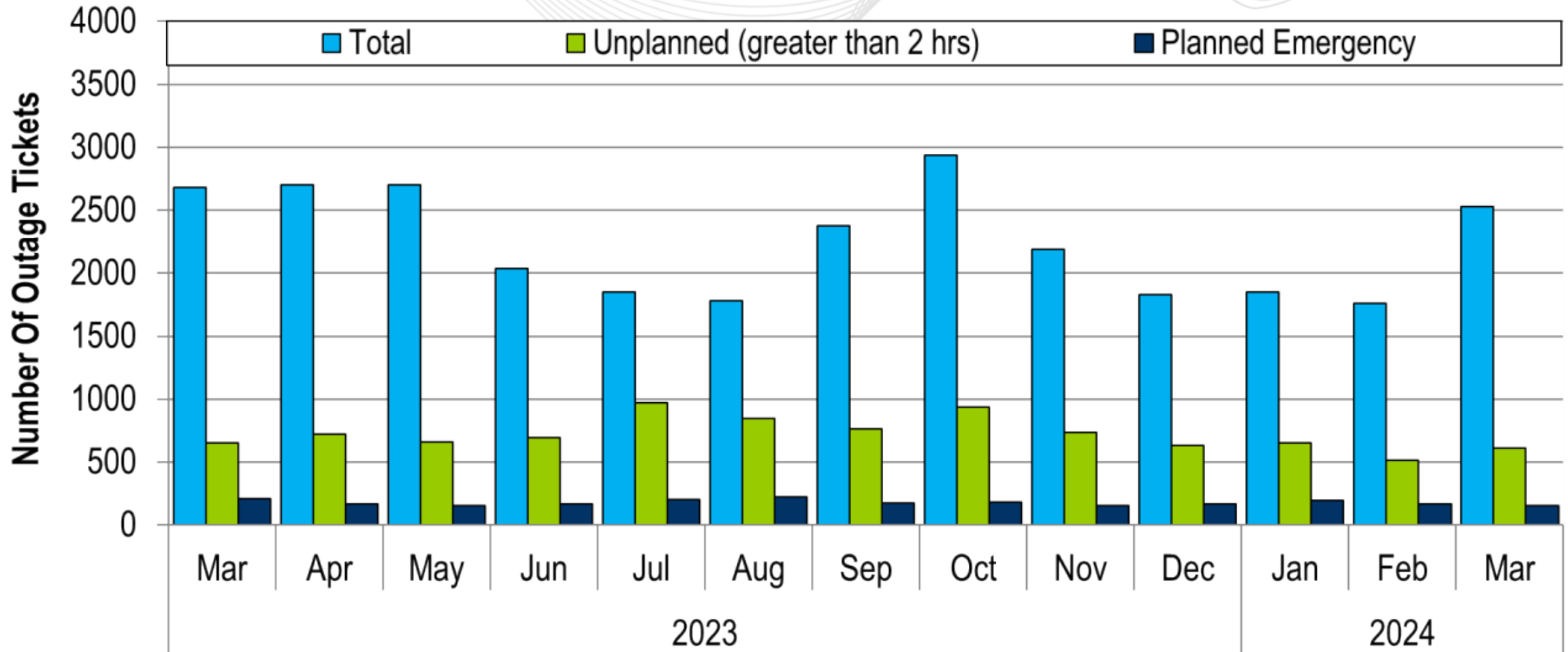
- 2 Shared Reserve events
- The following Emergency Procedures occurred:
 - 1 High System Voltage Action
 - 1 Geomagnetic Disturbance Warning
 - 6 Post Contingency Local Load Relief Warnings (PCLLRWs)

- 9 Shortage Cases Approved
- The approved Shortage Cases occurred on:
 - 03/10/2024:
 - 9 Shortage Cases from the 19:25 interval to the 19:59 interval
 - Factors: Load, interchange, and steam units slow to respond



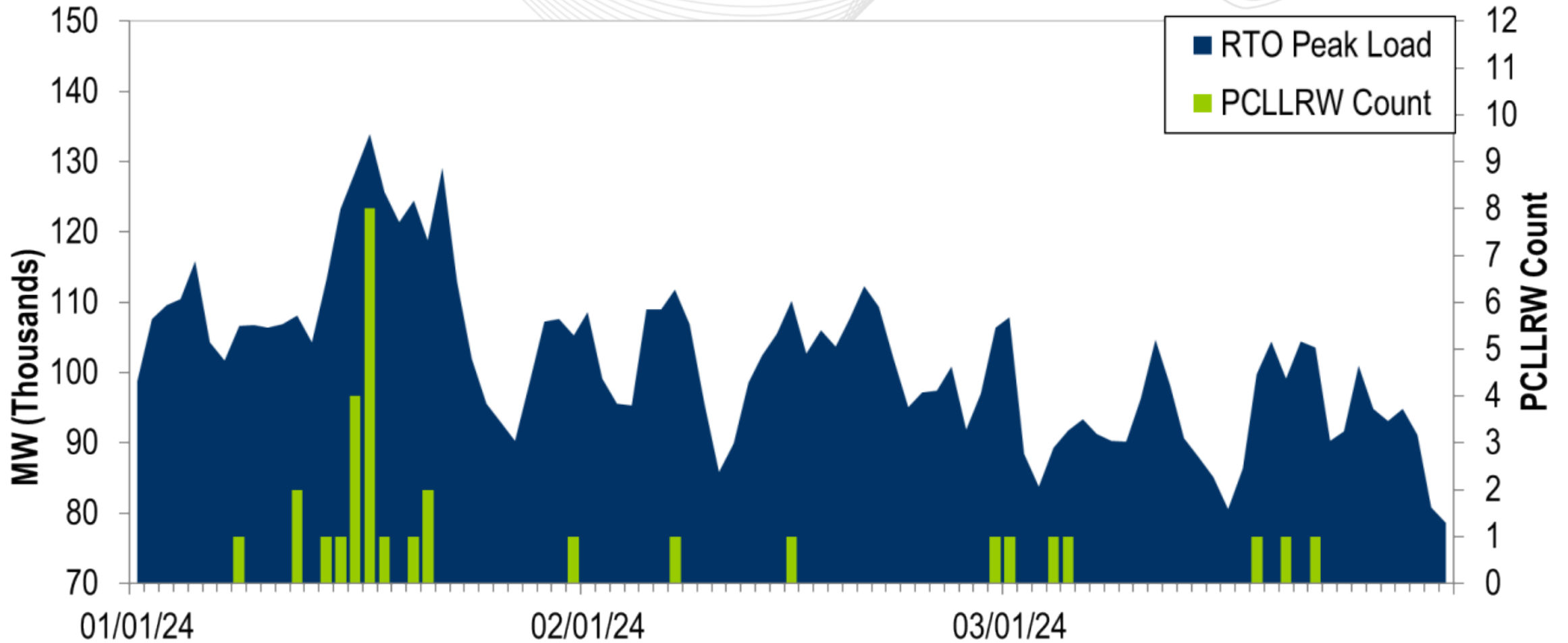
The 13-month average forced outage rate is 3.92% or 7,768 MW.
 The 13-month average total outage rate is 15.12% or 30,179 MW.

2022-2023 Planned Emergency, Unplanned, and Total Outages by Ticket



Note: "Unplanned Outages" include tripped facilities. One tripping event may involve multiple facilities.

PCLLRW Count Vs. Peak Load – Daily Values For 3 Months



- There have been no spin events in the month of March 2024

System Operations Report

Presenter:

Stephanie Schwarz,
Stephanie.Schwarz@pjm.com

SME:

Ross Kelly,
Ross.Kelly@pjm.com



Member Hotline

(610) 666 – 8980

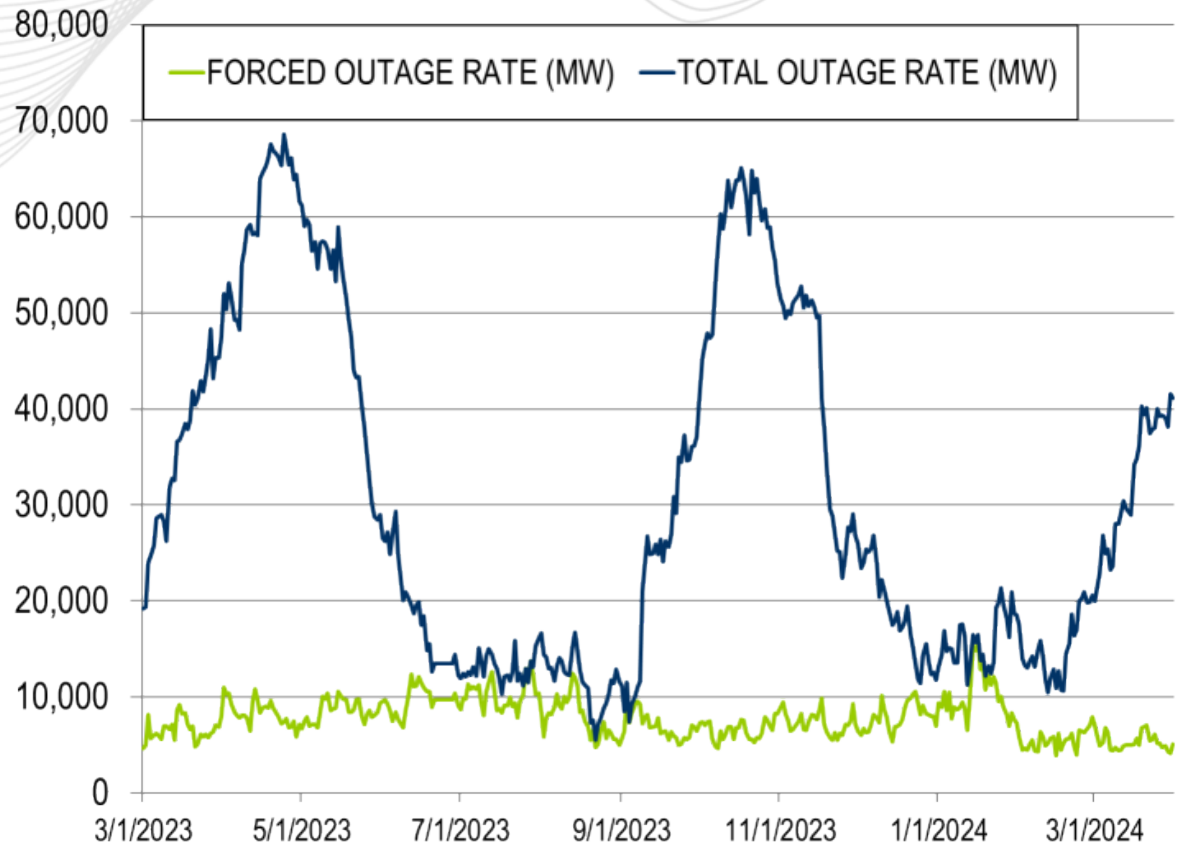
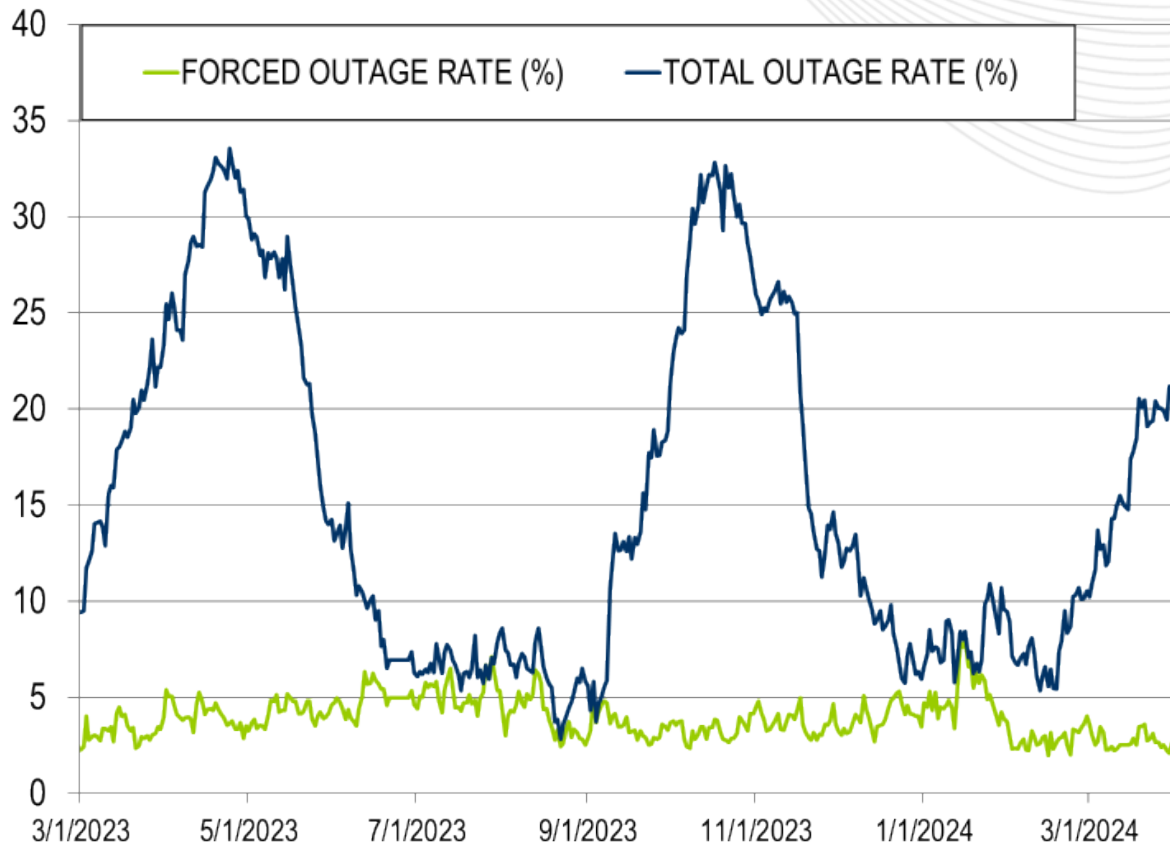
(866) 400 – 8980

custsvc@pjm.com

Appendix

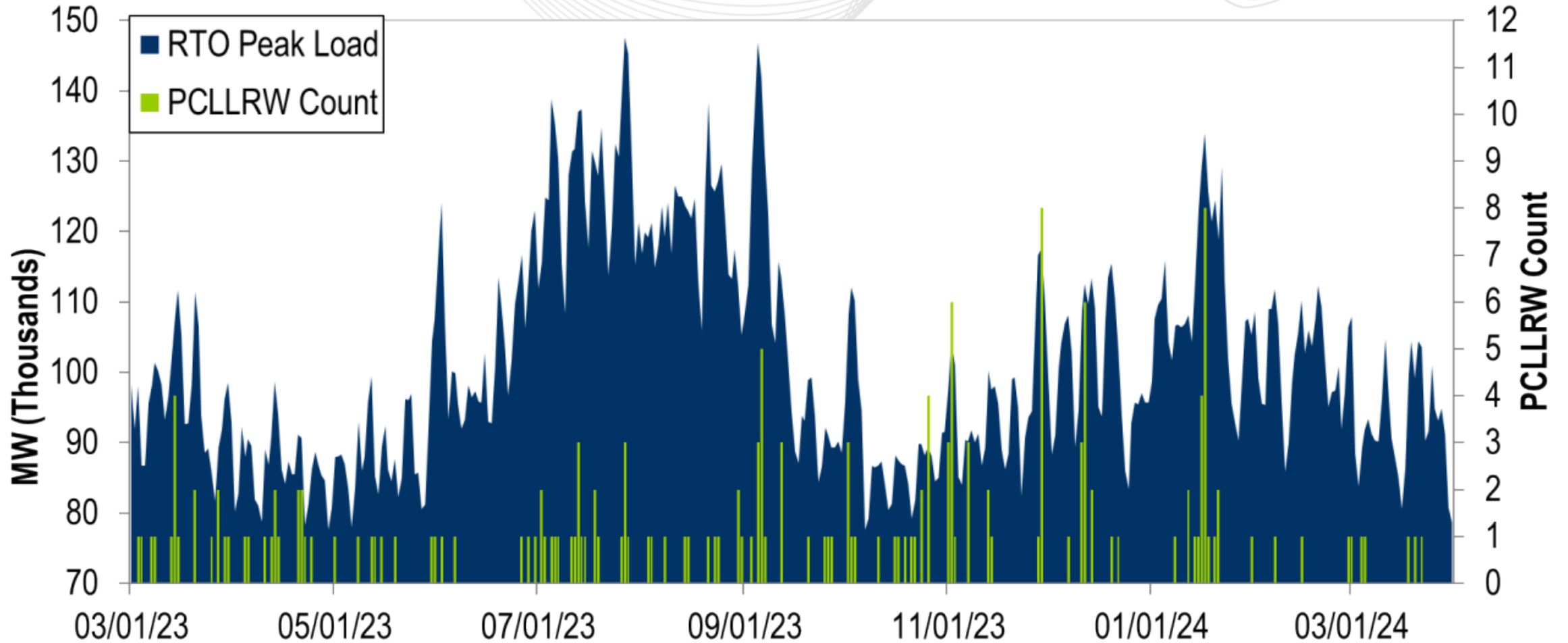
Goal Measurement: Balancing Authority ACE Limit (BAAL)

- The purpose of the new BAAL standard is to maintain interconnection frequency within a predefined frequency profile under all conditions (normal and abnormal), to prevent frequency-related instability, unplanned tripping of load or generation, or uncontrolled separation or cascading outages that adversely impact the reliability of the interconnection. NERC requires each balancing authority demonstrate real-time monitoring of ACE and interconnection frequency against associated limits and shall balance its resources and demands in real time so that its Reporting ACE does not exceed the BAAL ($BAAL_{LOW}$ or $BAAL_{HIGH}$) for a continuous time period greater than 30 minutes for each event.
- PJM directly measures the total number of BAAL excursions in minutes compared to the total number of minutes within a month. PJM has set a target value for this performance goal at 99% on a daily and monthly basis. In addition, current NERC rules limit the recovery period to no more than 30 minutes for a single event.



The 13-month average forced outage rate is 3.92% or 7,768 MW.
 The 13-month average total outage rate is 15.12% or 30,179 MW.

PCLLRW Count Vs. Peak Load – Daily Values For 13 Months



**PROTECT THE
POWER GRID
THINK BEFORE
YOU CLICK!**



Be alert to
malicious
phishing emails.

Report suspicious email activity to PJM.
(610) 666-2244 / it_ops_ctr_shift@pjm.com

