

Subregional RTEP Committee – Mid-Atlantic PPL Supplemental Projects

May 20, 2021

Needs

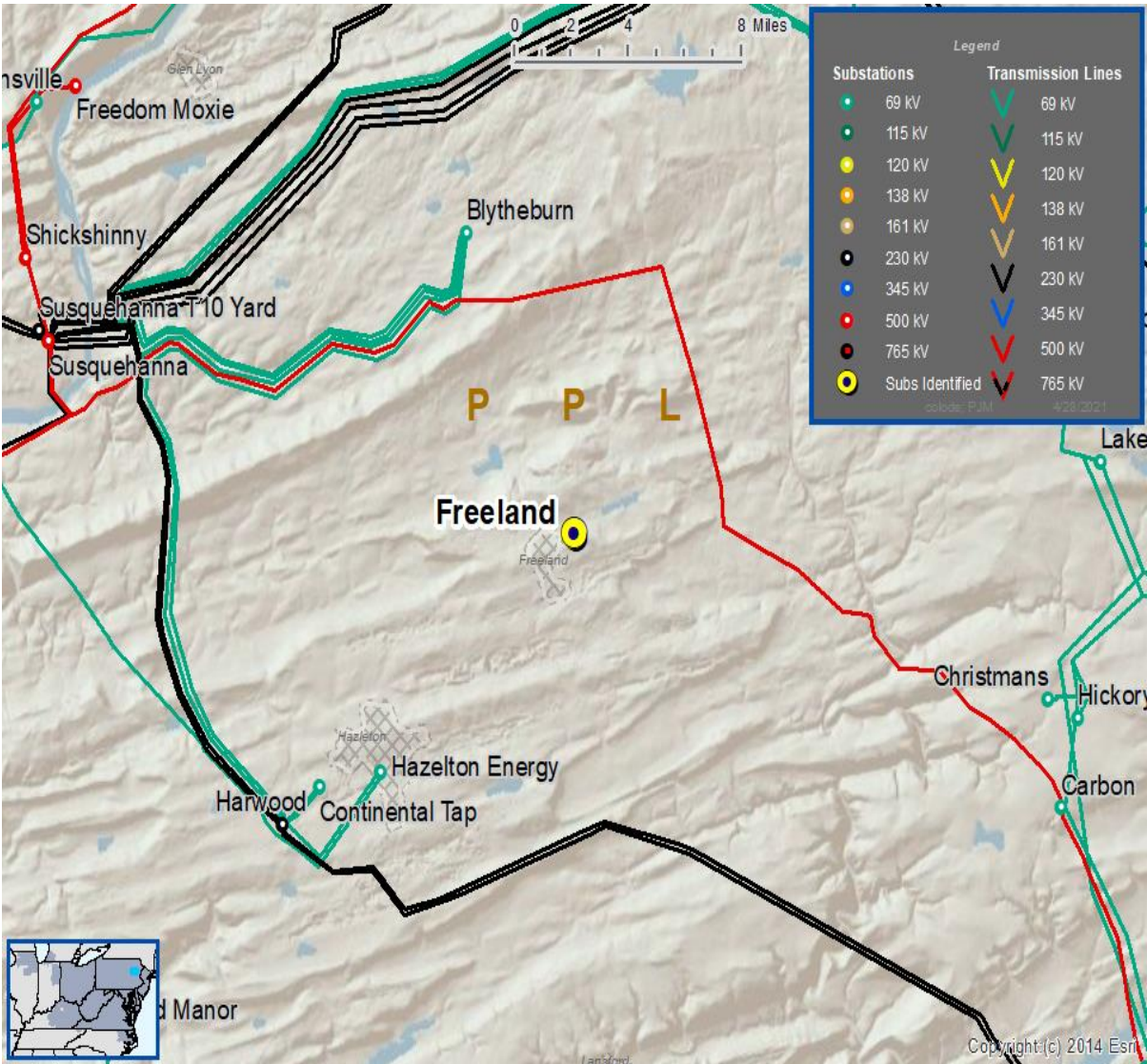
Stakeholders must submit any comments within 10 days of this meeting in order to provide time necessary to consider these comments prior to the next phase of the M-3 process

Need Number: PPL-2021-0001
Process Stage: Need Meeting 5/20/2021

Supplemental Project Driver: Customer Service

Problem Statement:
PPL Distribution has submitted a request for a second 69kV source to the Freeland 69/12kV substation due to load growth in the area.

Specific Assumption References:
[PPL 2021 Annual Assumptions](#)



Need Number: PPL-2021-0002

**Process Stage: Need Meeting
5/20/2021**

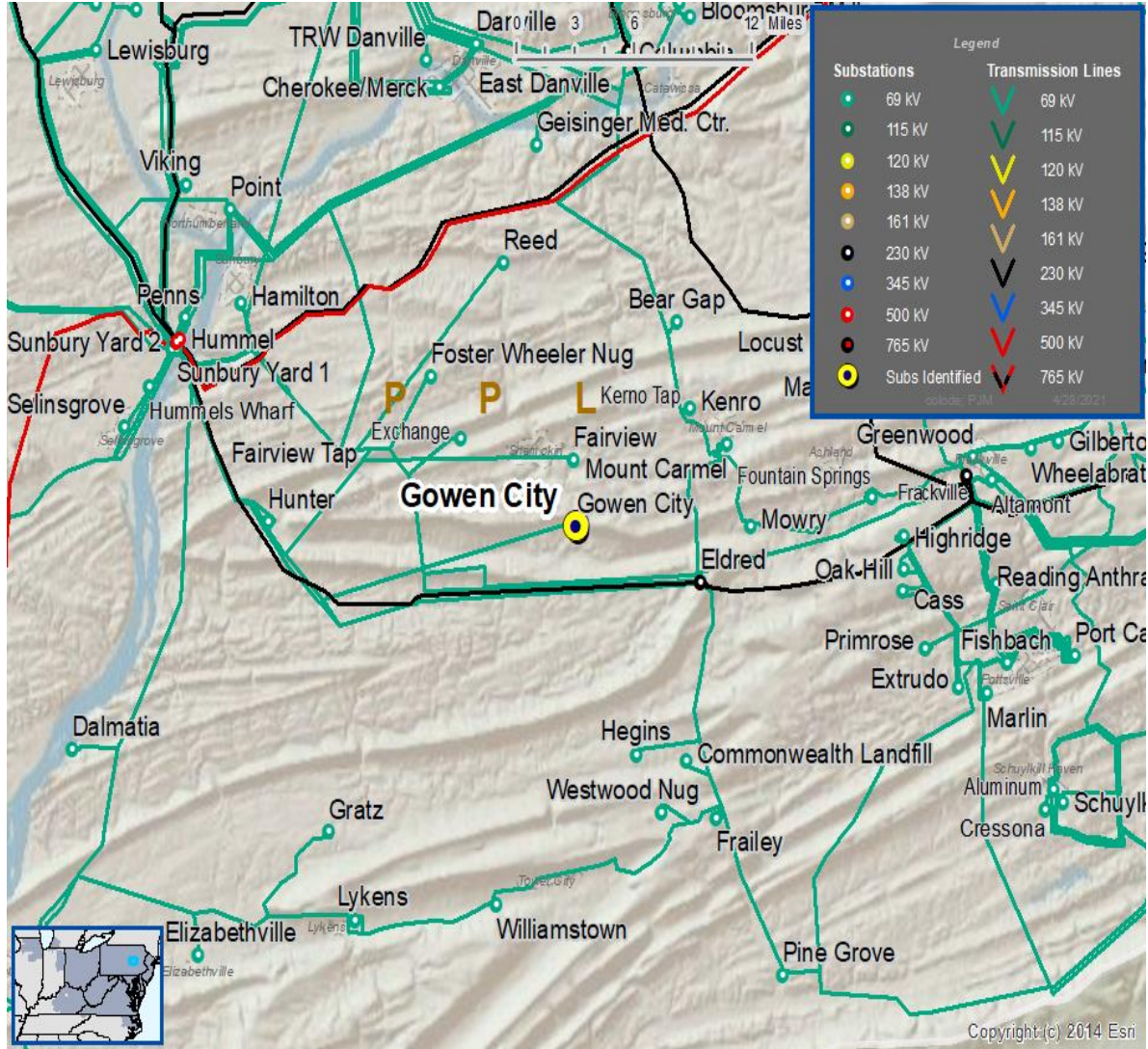
**Supplemental Project Driver:
Customer Service**

Problem Statement:

PPL Distribution has submitted a request for a second 69kV source to the Gowen City 69/12kV substation due to load growth in the area.

Specific Assumption References:

[PPL 2021 Annual Assumptions](#)



Need Number: PPL-2021-0003

Process Stage: Need Meeting 5/20/2021

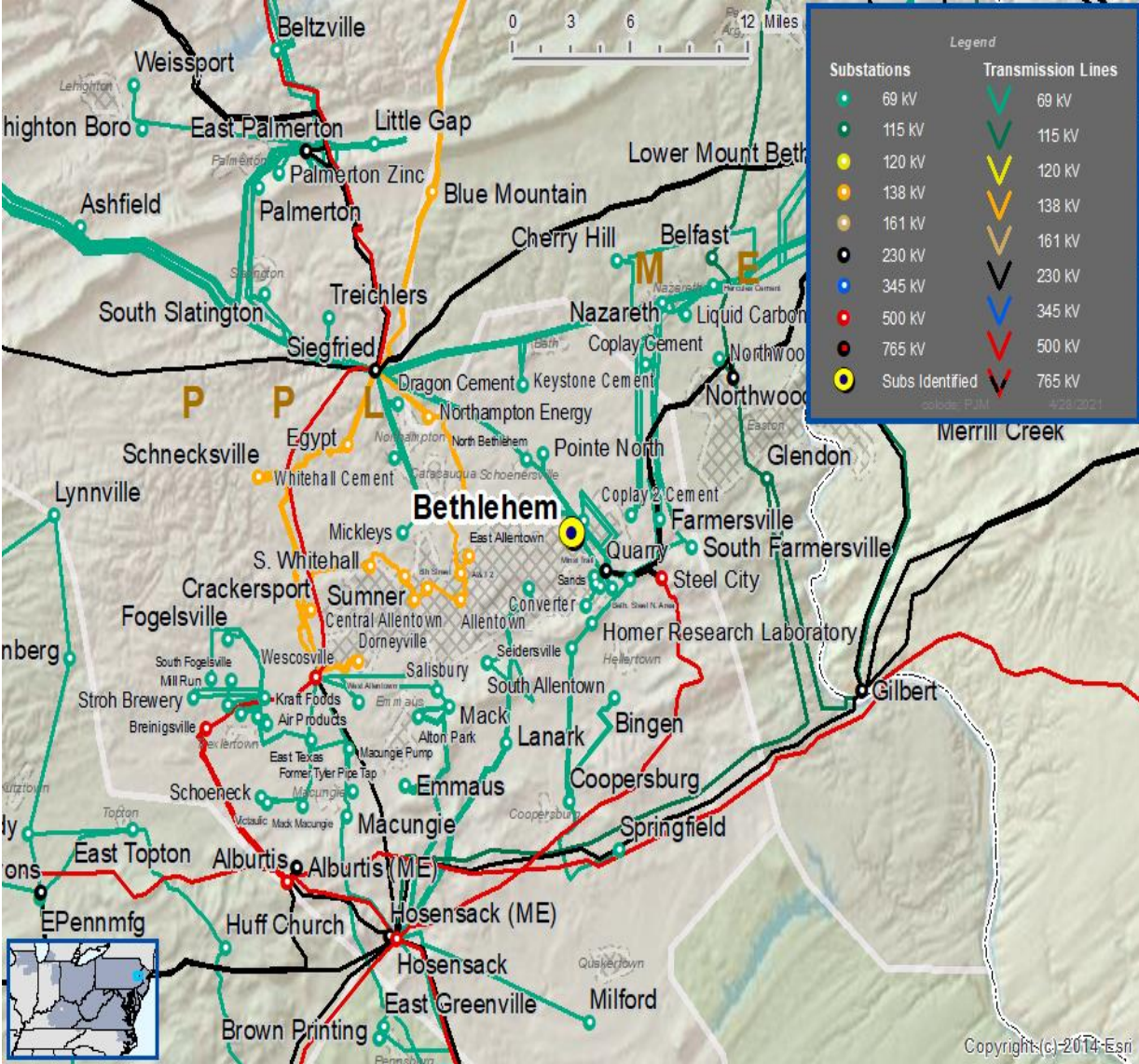
Supplemental Project Driver: Customer Service

Problem Statement:

PPL Distribution has requested a 69kV source to a new 69/12kV substation near Bethlehem due to load growth in the area.

Specific Assumption References:

[PPL 2021 Annual Assumptions](#)



Questions?



Appendix

High level M-3 Meeting Schedule

Assumptions	Activity	Timing
	Posting of TO Assumptions Meeting information	20 days before Assumptions Meeting
	Stakeholder comments	10 days after Assumptions Meeting
Needs	Activity	Timing
	TOs and Stakeholders Post Needs Meeting slides	10 days before Needs Meeting
	Stakeholder comments	10 days after Needs Meeting
Solutions	Activity	Timing
	TOs and Stakeholders Post Solutions Meeting slides	10 days before Solutions Meeting
	Stakeholder comments	10 days after Solutions Meeting
Submission of Supplemental Projects & Local Plan	Activity	Timing
	Do No Harm (DNH) analysis for selected solution	Prior to posting selected solution
	Post selected solution(s)	Following completion of DNH analysis
	Stakeholder comments	10 days prior to Local Plan Submission for integration into RTEP
	Local Plan submitted to PJM for integration into RTEP	Following review and consideration of comments received after posting of selected solutions

Revision History

5/10/2020 – V1 – Original version posted to pjm.com