

Subregional RTEP Committee – Mid-Atlantic FirstEnergy (Met-Ed) Supplemental Projects

June 15, 2023

Needs

Stakeholders must submit any comments within 10 days of this meeting in order to provide time necessary to consider these comments prior to the next phase of the M-3 process

Need Number: ME-2023-008

Process Stage: Need Meeting 06/15/2023

Project Driver:

System Performance Projects

Specific Assumption Reference:

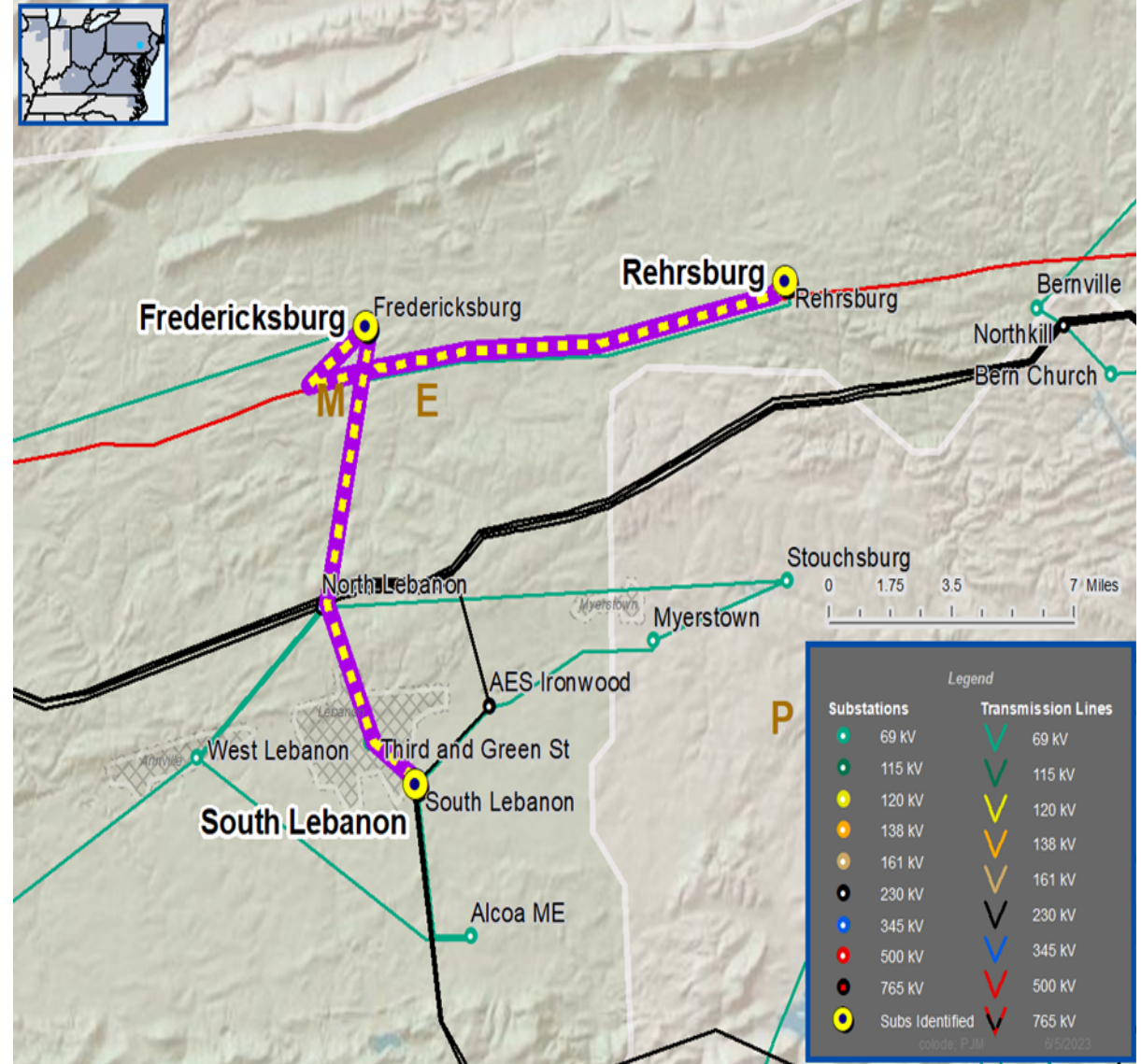
Add/Expand Bus Configuration

- Accommodate Future Transmission Facilities
- Build New Transmission Line
- Network Radial Lines
- Contingency constrained facilities

Automatic Sectionalizing Schemes

Problem Statement:

The Rehrersburg substation is fed radially off the Frystown – South Lebanon 69 kV line. An N-1 outage of this line forces an outage of Rehrersburg substation, causing a loss of 10.1 MW and 1,228 customers.



Solutions

Stakeholders must submit any comments within 10 days of this meeting in order to provide time necessary to consider these comments prior to the next phase of the M-3 process

Need Number: ME-2023-001

Process Stage: Solution Meeting 06/15/2023

Previously Presented: Need Meeting 02/16/2023

Project Driver:

Customer Service

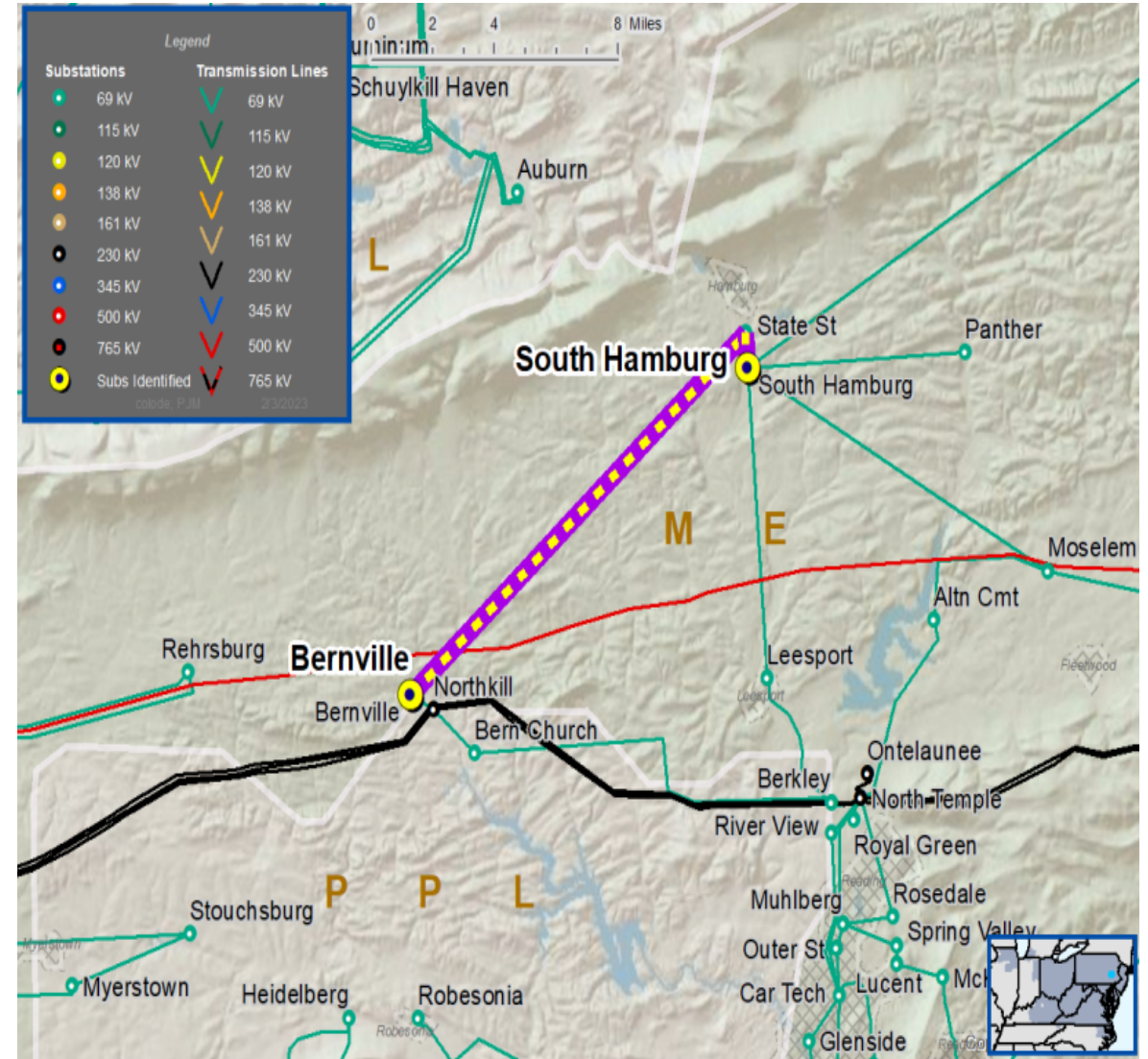
Specific Assumption Reference:

Customer request will be evaluated per FirstEnergy’s “Requirements for Transmission Connected Facilities” document and “Transmission Planning Criteria” document.

Problem Statement:

New Customer Connection – A customer requested 69 kV service; anticipated load is 13.4 MVA; location is near the Bernville – South Hamburg 69kV line.

Requested in-service date is 12/31/2024



Need Number: ME-2023-001

Process Stage: Solution Meeting –6/15/2023

Proposed Solution:

69 kV Transmission Line Tap

- Install three SCADA controlled transmission line switches
- Construct approximately 0.1 miles of transmission line using 556 ACSR 26/7 from tap point to customer substation
- Install one 69 kV revenue metering package at customer substation
- Modify relay settings at Bernville and South Hamburg substations

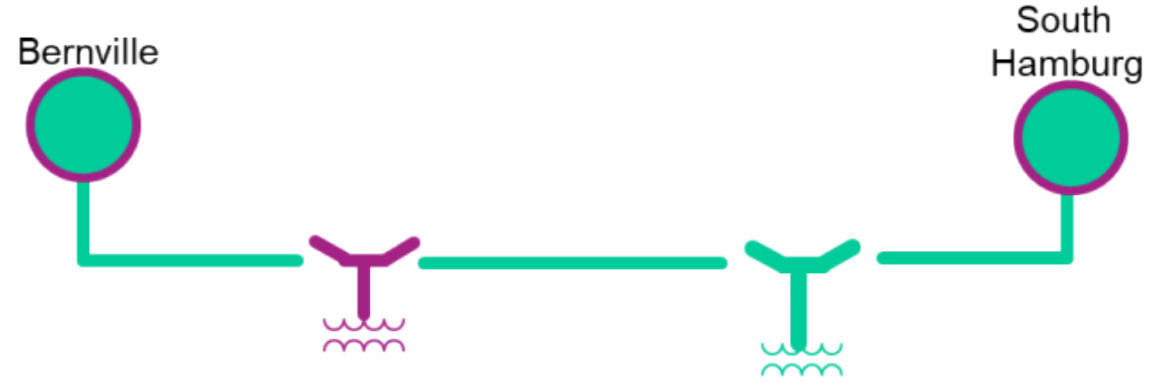
Alternatives Considered:

- None

Estimated Project Cost: \$1.6M

Projected In-Service: 12/31/2024

Status: Engineering



| Legend | |
|---------|--|
| 500 kV | |
| 345 kV | |
| 138 kV | |
| 69 kV | |
| 34.5 kV | |
| 23 kV | |
| New | |

Need Number: ME-2023-006

Process Stage: Solution Meeting 06/15/2023

Previously Presented: Need Meeting 5/18/2023

Project Driver(s):

Customer Service

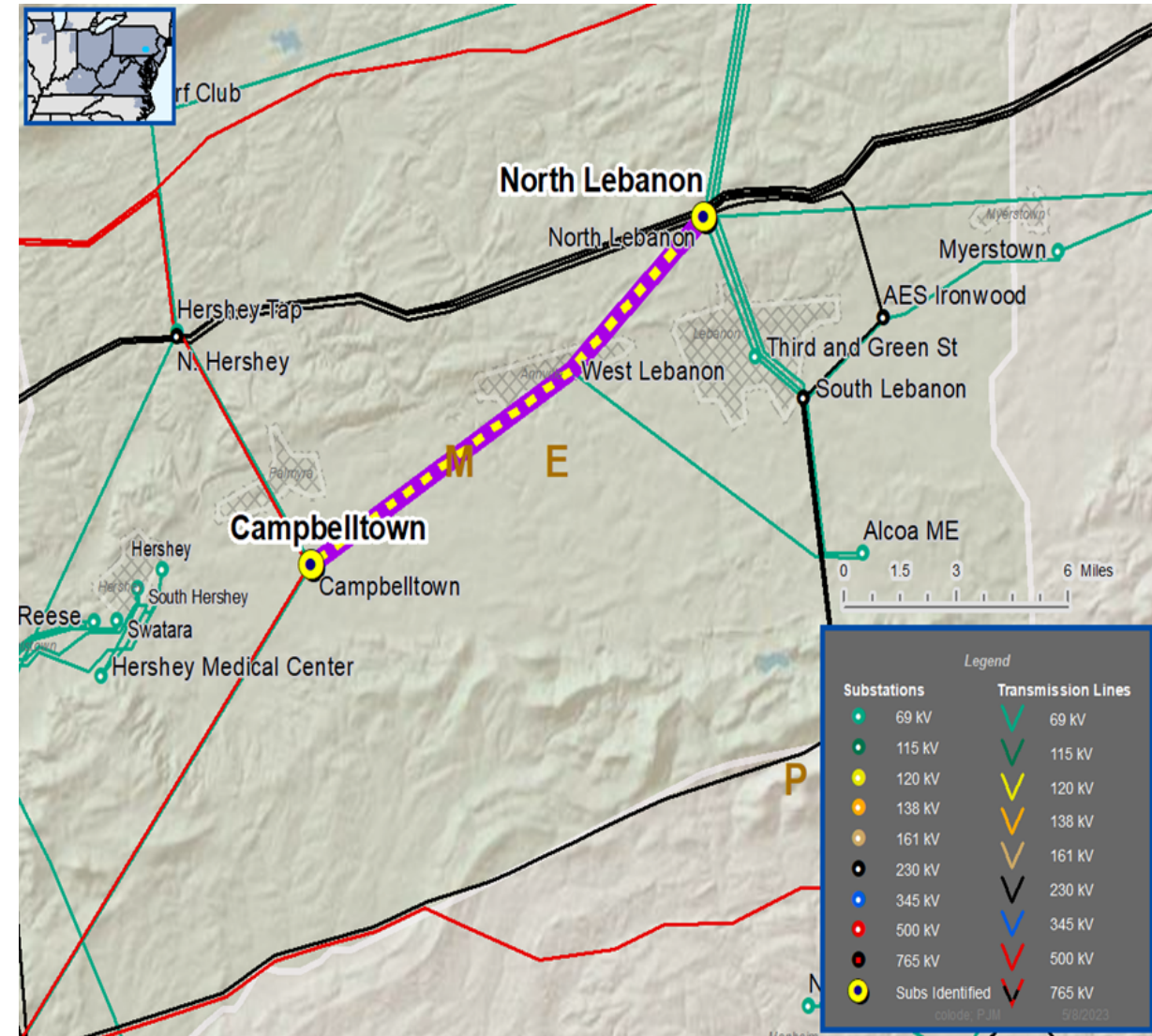
Specific Assumption Reference(s)

New customer connection request will be evaluated per FirstEnergy’s “Requirements for Transmission Connected Facilities” document and “Transmission Planning Criteria” document.

Problem Statement

New Customer Connection - has requested a new 69 kV delivery point near the Campbelltown-North Lebanon 69 kV line. The anticipated load of the new customer connection is 5 MVA.

Requested in-service date is 06/28/2024



Need Number: ME-2023-006

Process Stage: Solution Meeting 6/15/2023

Proposed Solution:

69 kV Transmission Line Tap

- Install two SCADA controlled transmission line switches
- Construct approximately 0.5 miles of transmission line using 556 ACSR 26/7 from tap point to customer substation
- Install one 69 kV revenue metering package at customer substation
- Modify relay settings at Campbelltown and North Lebanon substations

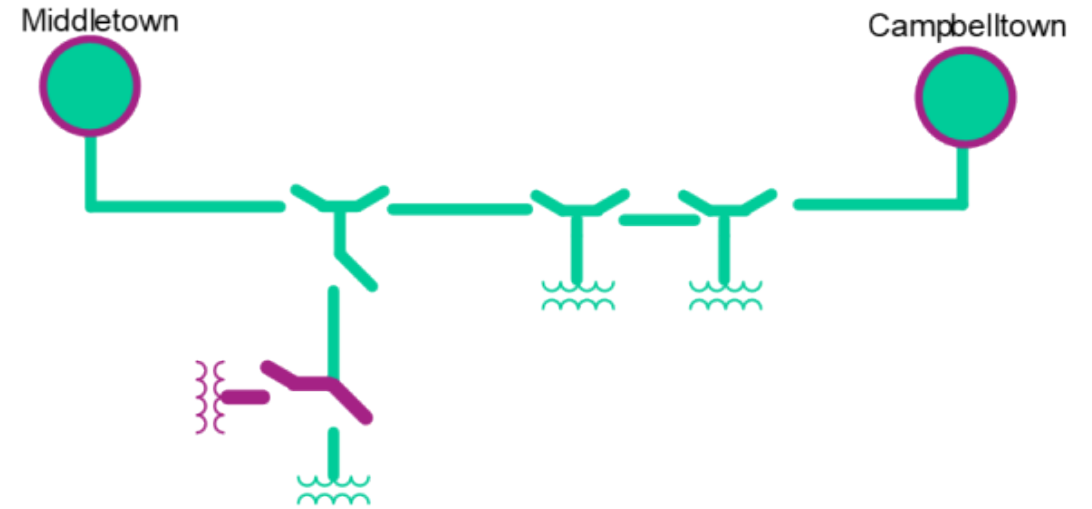
Alternatives Considered:

- None

Estimated Project Cost: \$2.9M

Projected In-Service: 1/15/2024

Status: Engineering



| Legend | |
|---------|--|
| 500 kV | |
| 345 kV | |
| 115 kV | |
| 69 kV | |
| 34.5 kV | |
| 23 kV | |
| New | |

Questions?



Appendix

High level M-3 Meeting Schedule

| Assumptions | Activity | Timing |
|--|---|---|
| | Posting of TO Assumptions Meeting information | 20 days before Assumptions Meeting |
| | Stakeholder comments | 10 days after Assumptions Meeting |
| Needs | Activity | Timing |
| | TOs and Stakeholders Post Needs Meeting slides | 10 days before Needs Meeting |
| | Stakeholder comments | 10 days after Needs Meeting |
| Solutions | Activity | Timing |
| | TOs and Stakeholders Post Solutions Meeting slides | 10 days before Solutions Meeting |
| | Stakeholder comments | 10 days after Solutions Meeting |
| Submission of Supplemental Projects & Local Plan | Activity | Timing |
| | Do No Harm (DNH) analysis for selected solution | Prior to posting selected solution |
| | Post selected solution(s) | Following completion of DNH analysis |
| | Stakeholder comments | 10 days prior to Local Plan Submission for integration into RTEP |
| | Local Plan submitted to PJM for integration into RTEP | Following review and consideration of comments received after posting of selected solutions |

Revision History

6/5/2023 – V1 – Original version posted to pjm.com