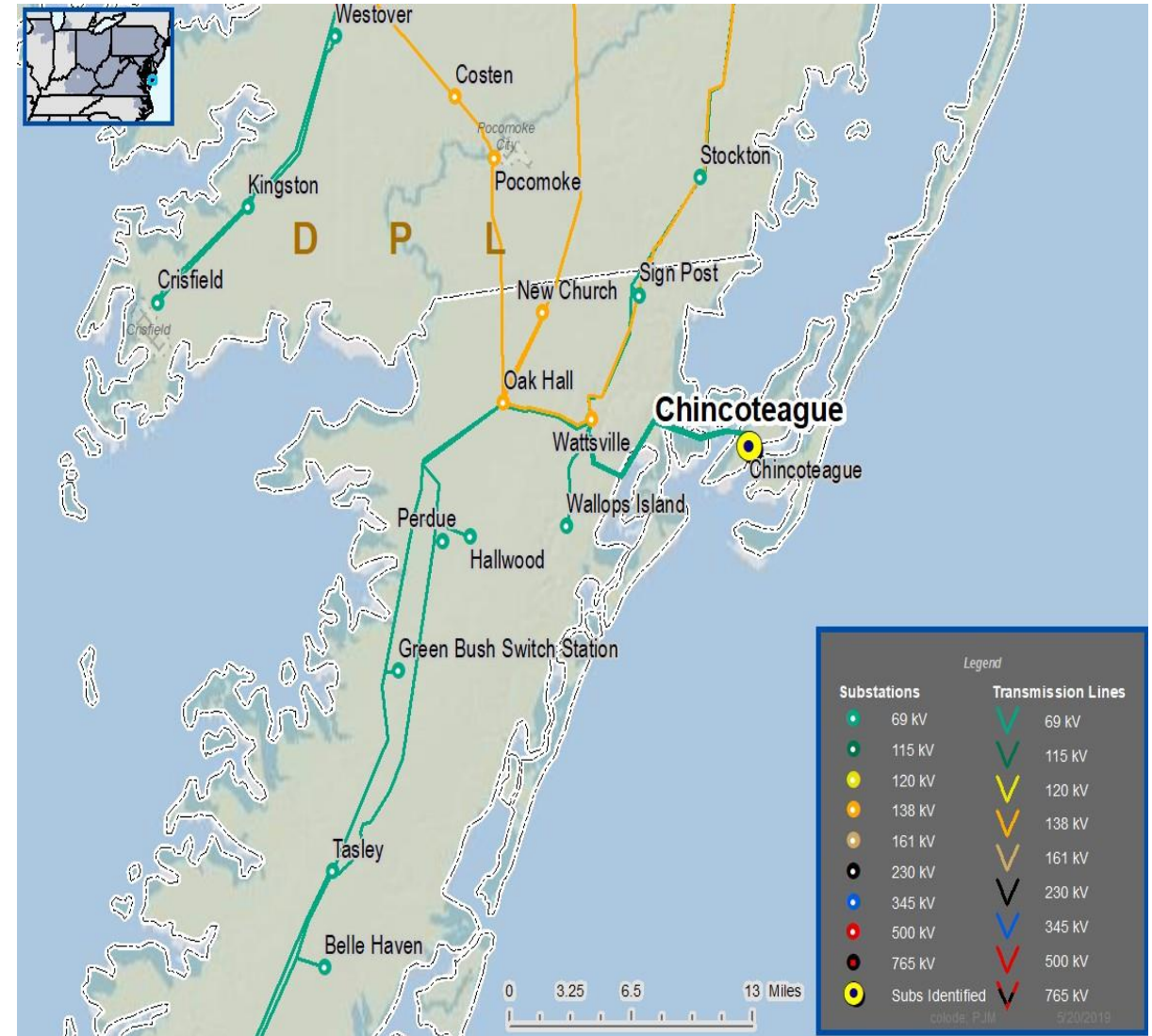


Submission of ODEC Supplemental Projects for Inclusion in the Local Plan

- **Need Number:** ODEC-2019-001
- **Process Stage:** Submission of Supplemental Project for inclusion in the Local Plan November 14, 2019
- **Previously Presented:** Need: May 31, 2019; Solution August 27, 2019
- **Project Drivers:** End of Life Criteria, Equipment Material Condition, Performance and Risk, Violations of Government Regulations
- **Specific Assumption Reference:**
- ODEC Assumptions 12/7/2018: End of Life Criteria III.B.2. and External Code Requirements Criteria I.C.
- ODEC shall replace aged facilities which because of their age or condition pose a risk to reasonable reliability and resilience levels.
- The ODEC transmission system shall be constructed in adherence with Government regulations, including, but not limited to those from: FCC, FAA, and DHS.
- **Problem Statement:**
- The two 69kV lines serving Chincoteague (rated 36MW each) are nearing end of life (pole line installed 1983). Wood poles are exhibiting rot.
- Both lines are co-located on several of the structures resulting in loss of all load on Chincoteague Island under single contingency.
- Existing poles are difficult to access in Simoneaston Bay tidal marsh on Fish & Wildlife controlled land
- Existing poles violate FAA glide path clearances for the Wallops Island NASA flight facility.



ODEC Transmission Zone M-3 Process 6745-6746 Underground Near Wallops Flight Facility

Need Number: ODEC-2019-001

Process Stage: Submission of Supplemental Project for inclusion in the Local Plan November 14, 2019

Selected Solution: Install 2800' Underground Section

- Meets FAA criteria
- Has support of NASA and USFWS

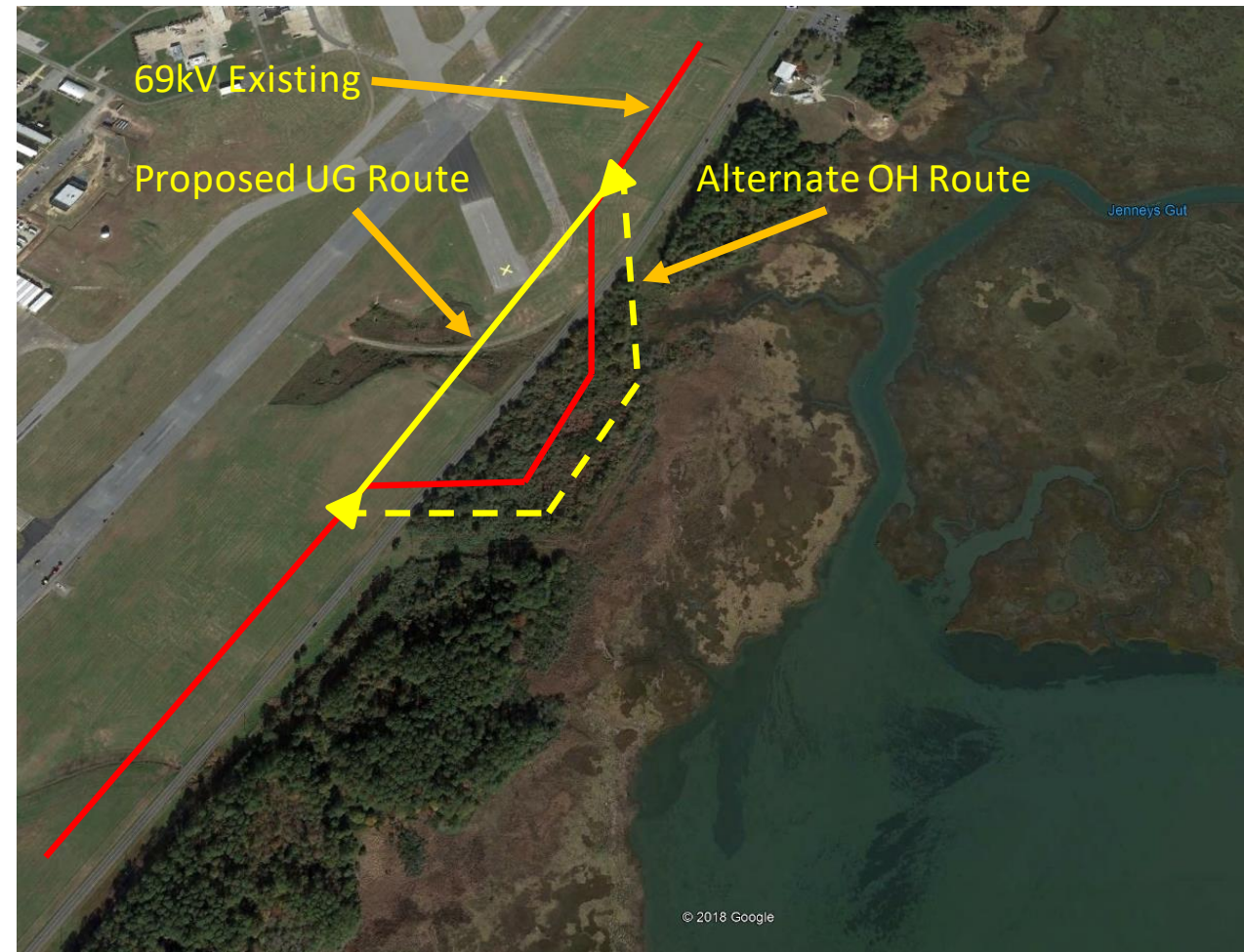
Estimated Cost: \$6 Million

Projected In-Service: May 31, 2022

Supplemental Project ID: S2026

Project Status: Preliminary Engineering

Model: 2018 Series 2023 Summer RTEP 50/50





ODEC Transmission Zone M-3 Process Plantation Substation

Need Number: ODEC-2019-002

Process Stage: Submission of Supplemental Project for inclusion in the Local Plan November 14, 2019

Previously Presented: Need: May 31, 2019; Solution August 27, 2019

Project Driver: Transmission Customer Request

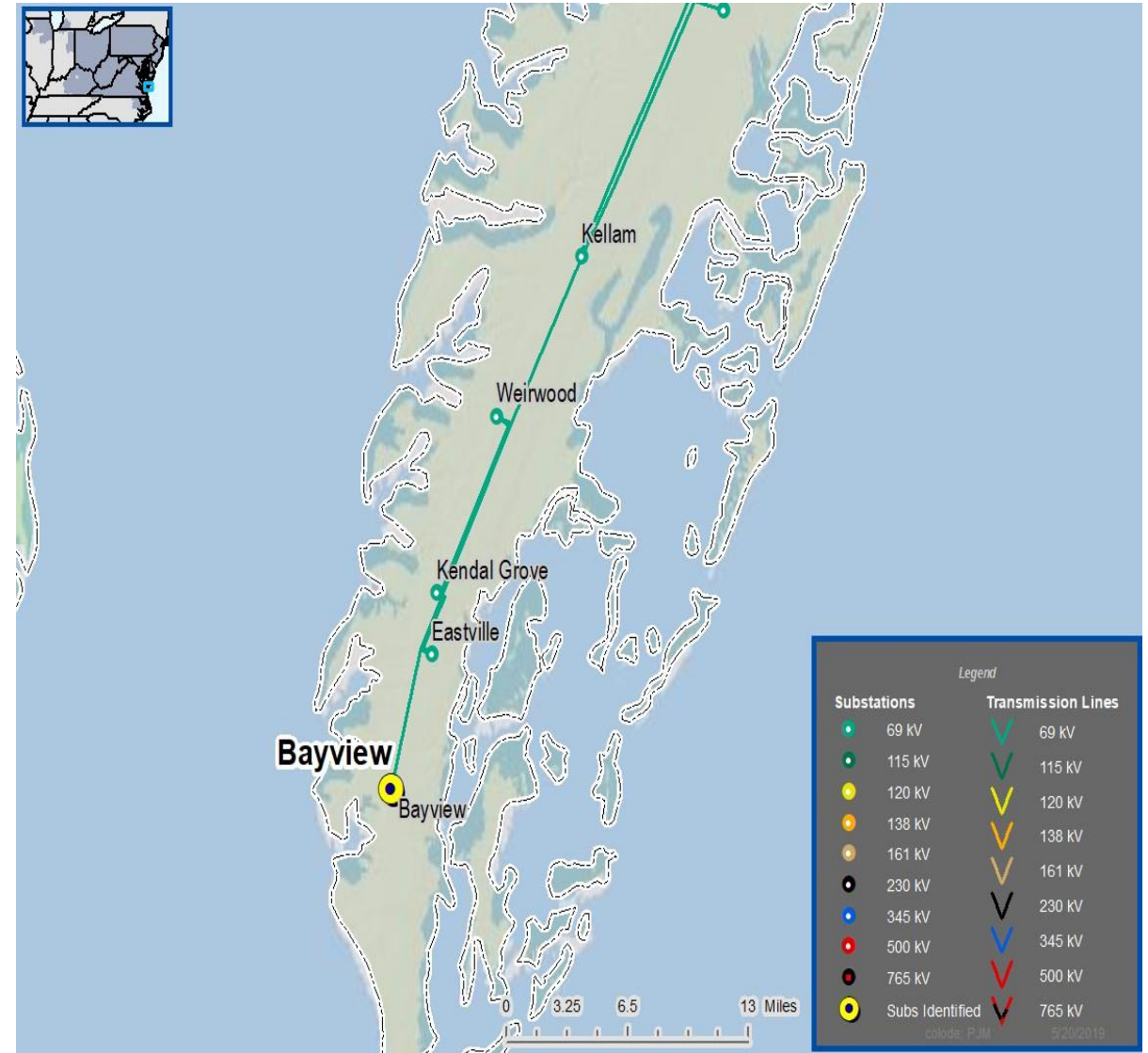
Specific Assumption Reference:

ODEC Assumptions December 7, 2018

- Interconnection Points II.A: ODEC shall modify or add interconnection points as needed in accordance with applicable interconnection agreements

Problem Statement:

- Load Serving Transmission Customer has requested a new delivery point (Plantation Substation) and retirement of existing Bayview Sub D.P.
- Customer is doing a voltage conversion and consolidating substations and retiring several D.P.s.
- Load increase on this sub due to consolidation is 4MW (Current load 18MW, new load 22MW).
- Current site constrained due to existing PJM generator collocated at site



Need Number: ODEC-2019-002

Process Stage: Submission of Supplemental Project for inclusion in the Local Plan November 14, 2019

Selected Solution:

Connect Proposed Plantation Substation

Estimated Cost: \$4 Million

Projected In-Service: December 31, 2020

Supplemental Project ID: S2027

Project Status: Engineering

Model: 2018 Series 2023 Summer RTEP 50/50



Revision History

11/14/2019 – V1 – Local Plan for s2026 and s2027 posted to pjm.com