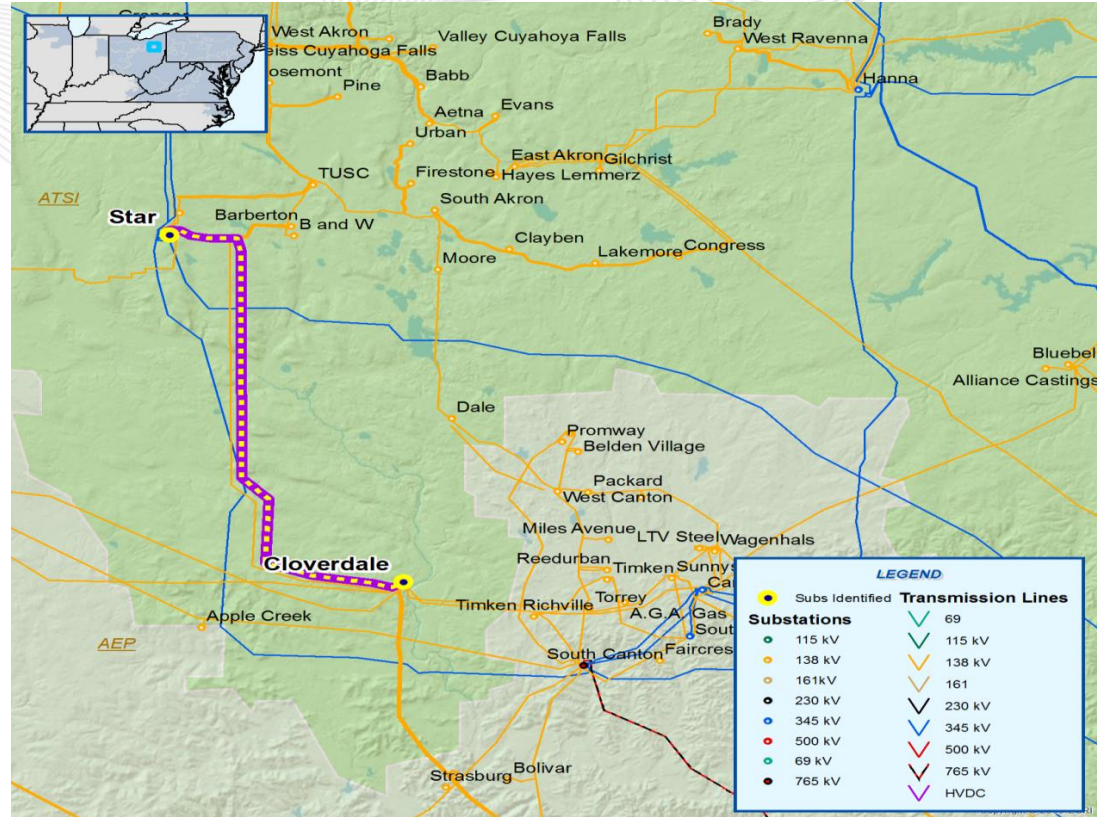




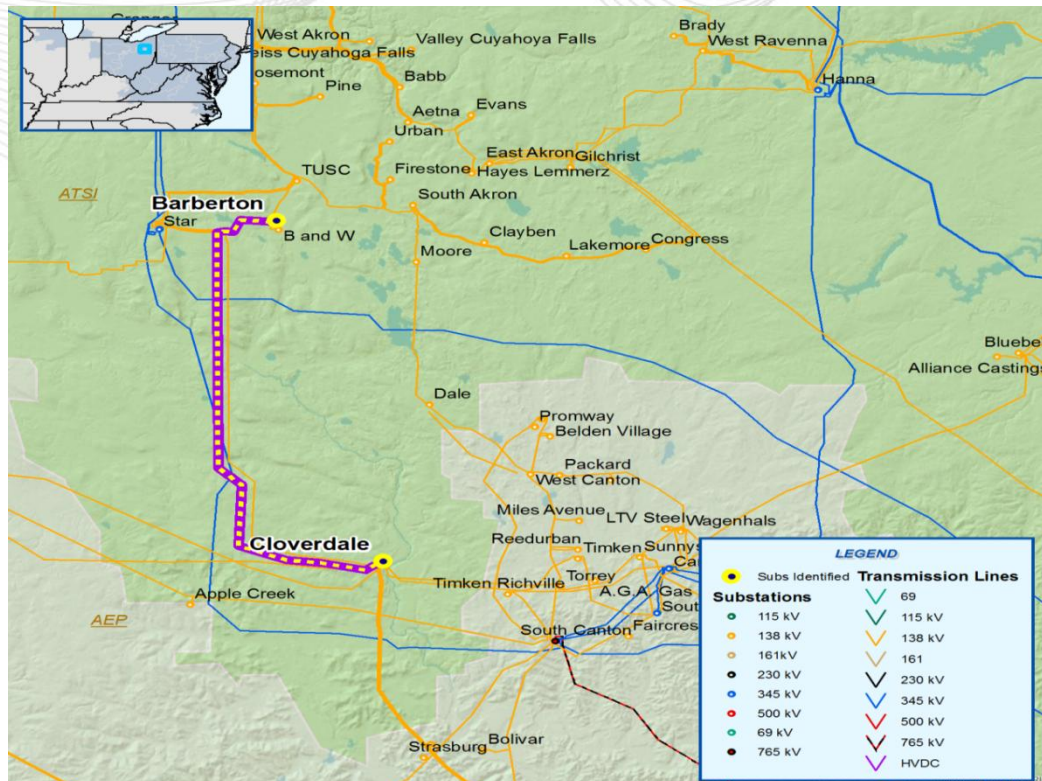
PJM SRRTEP – West Reliability Analysis Update

1/4/2013

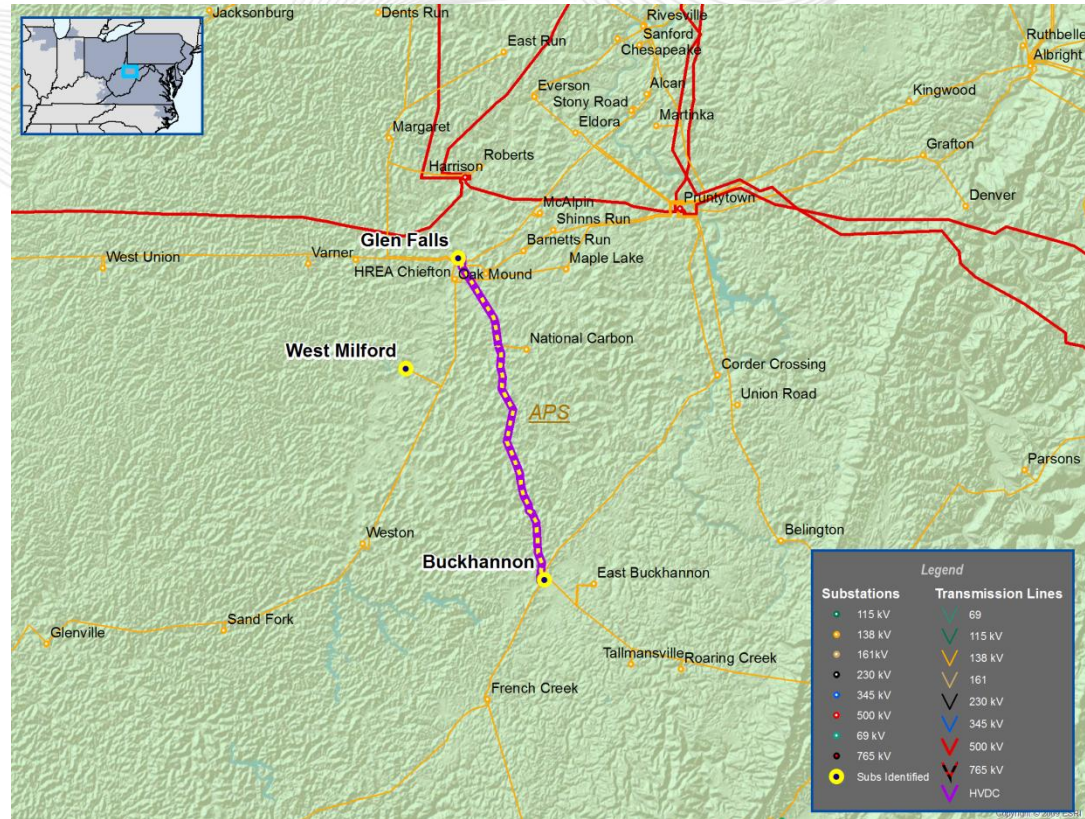
- **N-1-1 Thermal Violation**
- The Cloverdale – Star 138kV line is overloaded for the loss of the Sammis – Star 345kV line and the loss of the Harmon – Star 345kV line; The Cloverdale – Star 138kV line can not be dispatched below normal rating for the loss of the Harmon – Star 345kV line
- Increase the design operating temperature on the Cloverdale – Star 138kV line (B2105)
- Estimated Project Cost: \$0.6805M
- Projected IS Date: 6/1/2017



- **N-1-1 Thermal Violation**
- The Cloverdale – Barberton 138kV line is overloaded for the loss of the Sammis – Star 345kV line and the loss of the Harmon – Star 345kV line
- Increase the design operating temperature on the Cloverdale – Barberton 138kV line (B2106)
- Estimated Project Cost: \$0.6805M
- Projected IS Date: 6/1/2017



- **Project Scope Change**
- B1840
- Previous Scope: Construct a 138 kV line between Buckhannon and Weston 138 kV substations
- Previous Estimated Cost: \$17.5M
- New Scope: Loop the Buckhannon - Glen Falls 138 kV line into the West Milford 138 kV Substation
- New Estimated Cost: \$15.8M
- Projected IS Date: 6/1/2015





Supplemental Projects

- **Supplemental Project Change**
- S0446
- Old Scope: Remove the 138kV Cedarville cap from service. Split into 22&28 MVAR banks. Move the 22 MVAR section & equipment to Willey 138KV.
- New Scope: Remove the 138kV Cedarville cap from service. Split into 22&28 MVAR banks. Move the 50.4 MVAR section & equipment to Willey 138KV.
- Estimated Project Cost: \$0.38M
- Projected IS Date: 12/31/2013

