

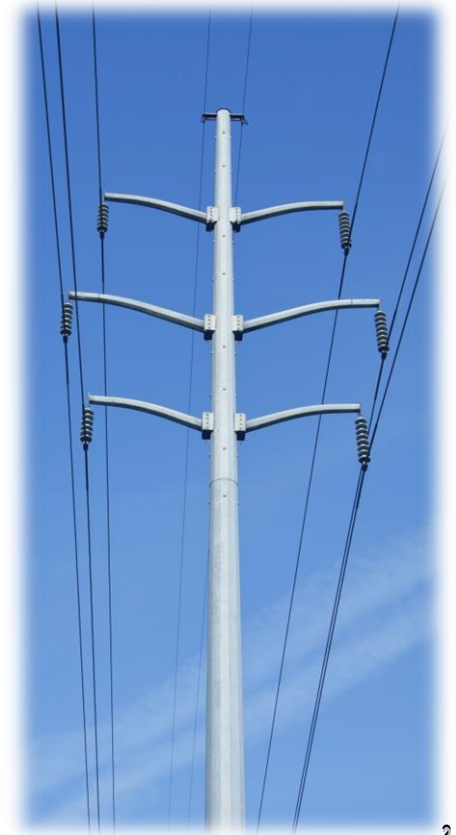


Duke Energy Ohio/Kentucky

2016 RTEP Assumptions for Western Sub-region, February 2016



- Serves Greater Cincinnati Area
- Total Transmission Facilities: 1903 Miles
 - 345 kV ~403 Miles
 - 138 kV ~725 Miles
 - 69 kV ~775 Miles



- Load Flow Cases
 - DEOK uses the RTEP and ERAG MMWG cases for transmission and 69 kV analysis

- RTEP Case
 - DEOK works with PJM to develop RTEP case
 - Verifies topology, ratings, etc. are accurate

- MMWG Case
 - DEOK detailed case
 - Load scaled to latest 50/50 Forecast

- 2015 RTEP Baseline Assessment
 - PJM performs analysis on DEOK area using RTEP case
 - Satisfies NERC reliability standards TPL-001 through TPL-004

- DEOK validates analysis and coordinates with PJM to identify upgrades

- Upgrades are presented to Sub-regional RTEP Committee and/or the TEAC for stakeholder input

- Supplemental Projects
 - DEOK criteria based upgrades
 - Provides support to 69 kV and distribution system
 - Facilitates interconnection of new transmission customers
 - Provides operational flexibility
 - Addresses Aging Infrastructure
 - Not approved by PJM Board

- DEOK Transmission Planning Criteria
 - Filed under FERC Form 715
 - Available on PJM website



