



PJM 2022 RTEP Reliability Window 3 Status and Timeline Update

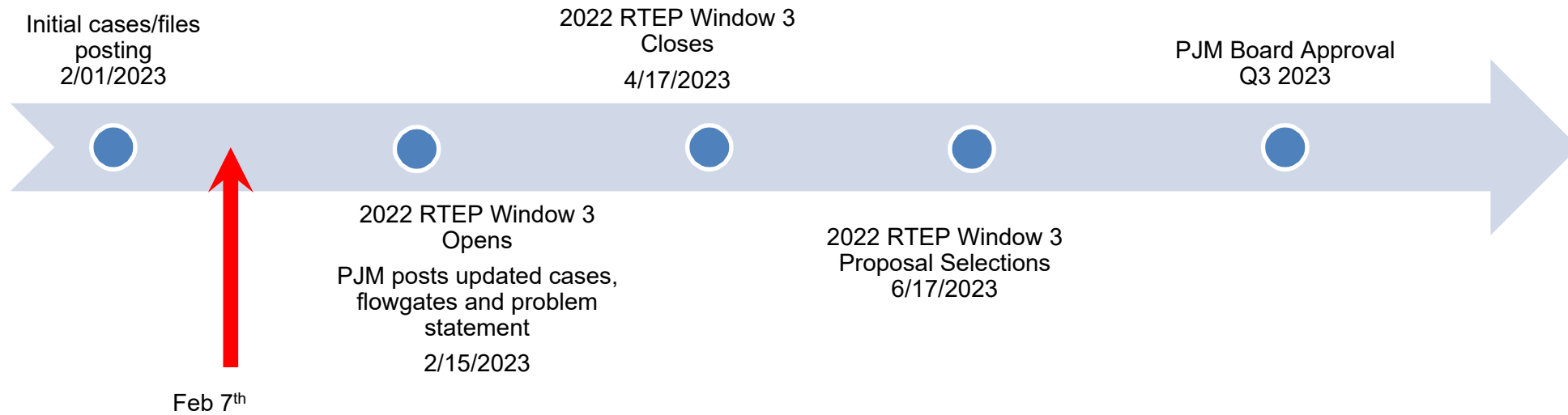
Sami Abdulsalam, Senior Manager

Transmission Expansion Advisory Committee

Feb 7, 2023



2022 RTEP Reliability Window 3 Timeline

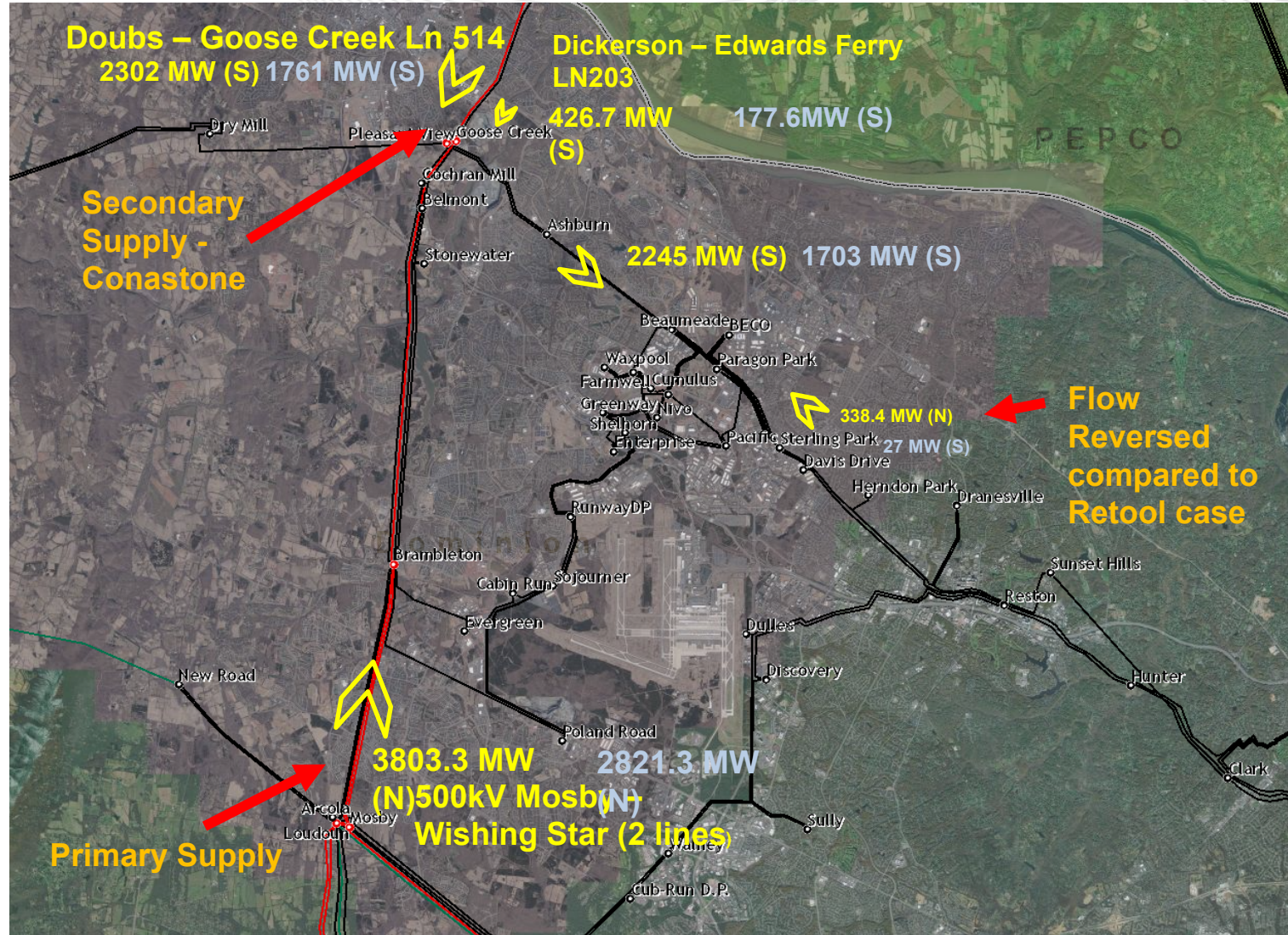


- Address identified transmission system constraints upto and including 2028 (~7.5 GWs of load increase based on 2023 PJM Forecast):
 1. Within the Data Center Loads serving areas in Northern Virginia and APS/Doubs
 2. Regional bulk transmission reinforcements to enable needed power transfers.

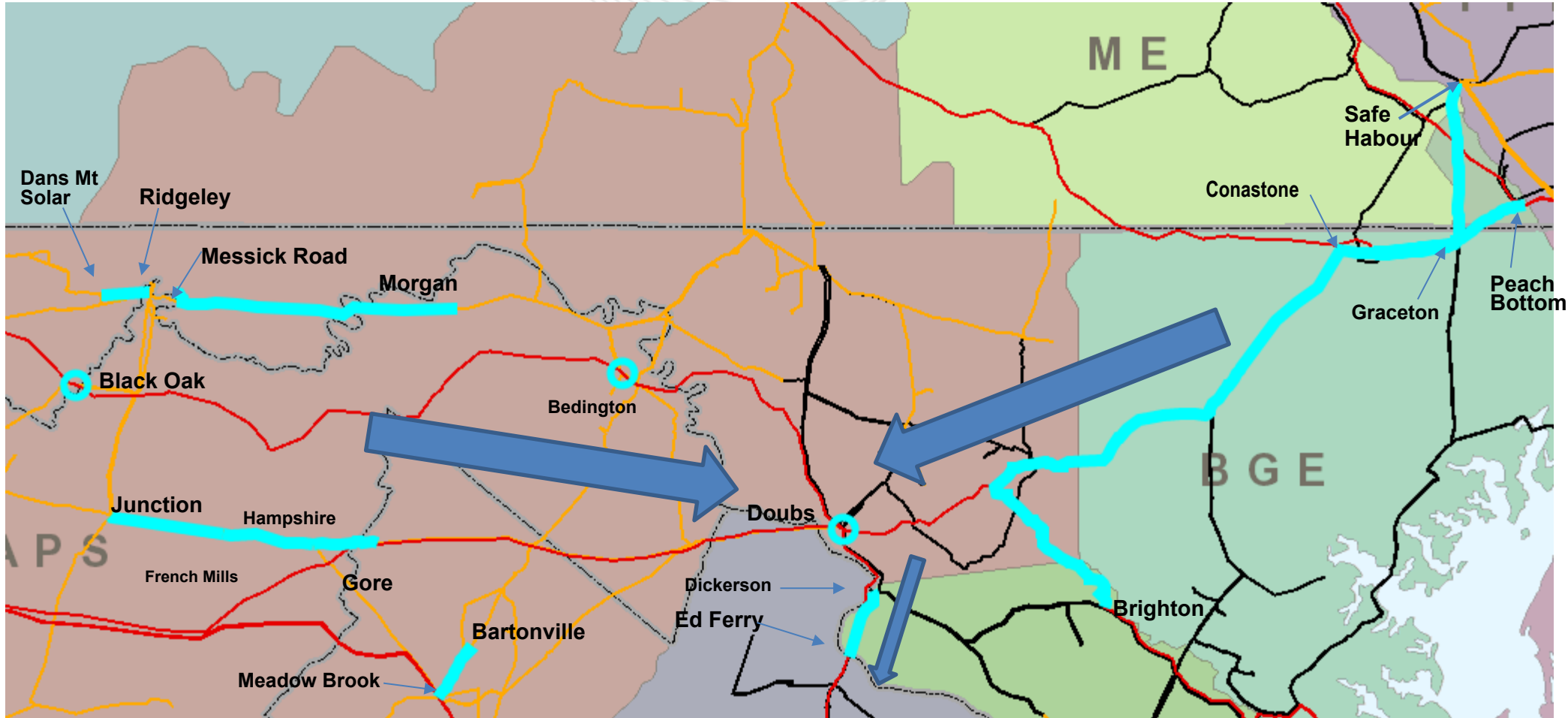
- Develop/Assess sub-group enhancements for the interim 5.5 GW load increase level:
 - Assess if there is a subset of enhancements that needs to be prioritized to ensure meeting the reliability requirements for the first 5.5GW load growth.

- Goal: Ensure a robust set of transmission enhancement proposals are selected to address the forecasted load growth in the area.
 - Constructability, economics, flexibility and other relevant factors will be considered.

Sample Local and Path Flows - Northern Virginia - Preliminary

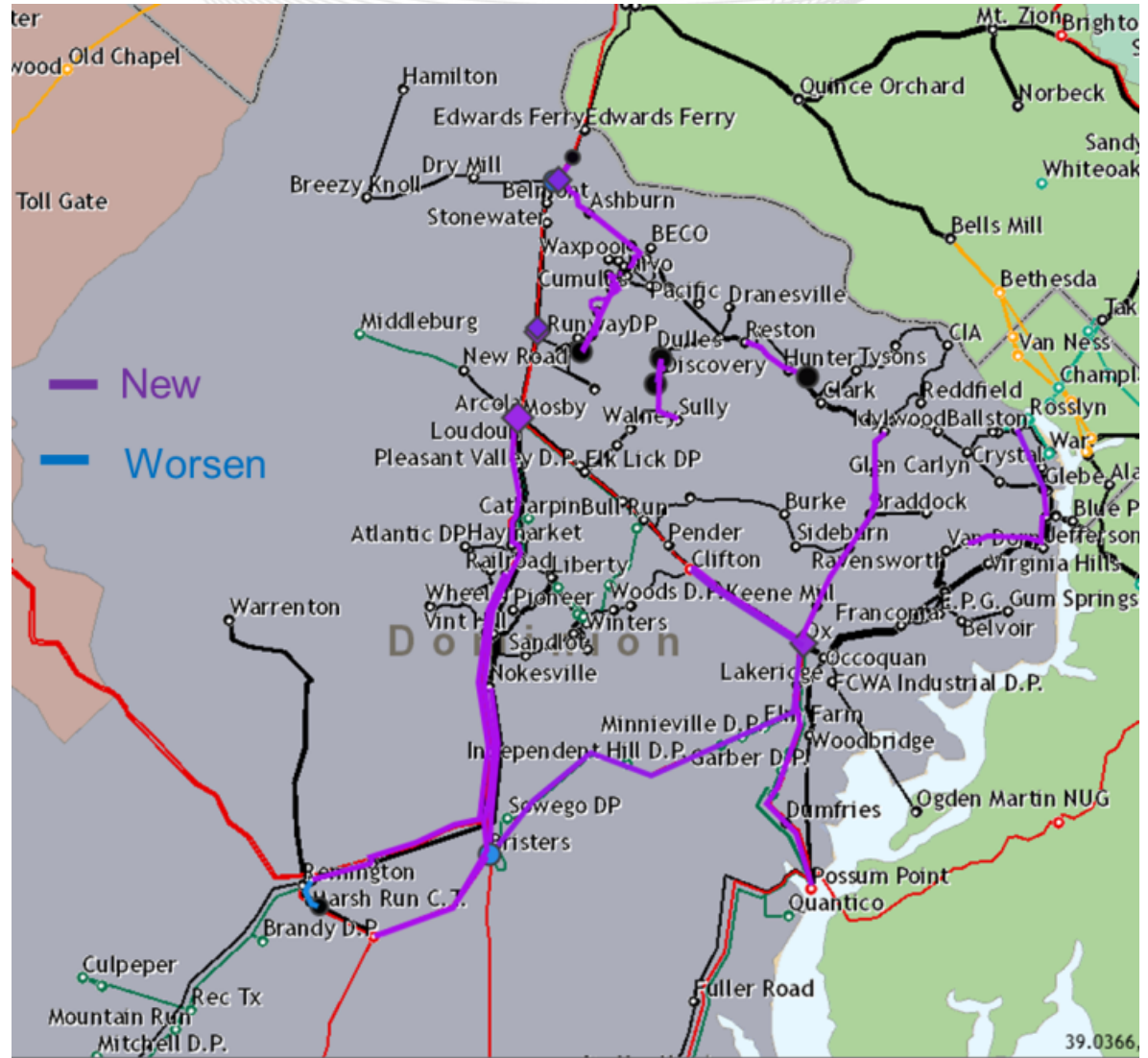


Regional and Reactive Interface Thermal Constraints (N-1 and Gen Deliverability) - Preliminary





Sample Local and Path Thermal Violations - Northern Virginia - Preliminary



Facilitator:
Sue Glatz,
Suzanne.Glatz@pjm.com

Secretary:
Tarik Bensala,
Tarik.Bensala@pjm.com

SME/Presenter:
Sami Abdulsalam,
Sami.Abdulsalam@pjm.com

2022 RTEP Window 3 Update



Member Hotline

(610) 666 – 8980

(866) 400 – 8980

custsvc@pjm.com

Version No.	Date	Description
1	2/3/2023	<ul style="list-style-type: none">• Original slides posted
2	2/6/2023	<ul style="list-style-type: none">• Added slide for regional and reactive interface thermal constraints

**PROTECT THE
POWER GRID**
**THINK BEFORE
YOU CLICK!**



Be alert to
malicious
phishing emails.

Report suspicious email activity to PJM.
(610) 666-2244 / it_ops_ctr_shift@pjm.com

