



Performance Assessment Interval - New Trigger Logic

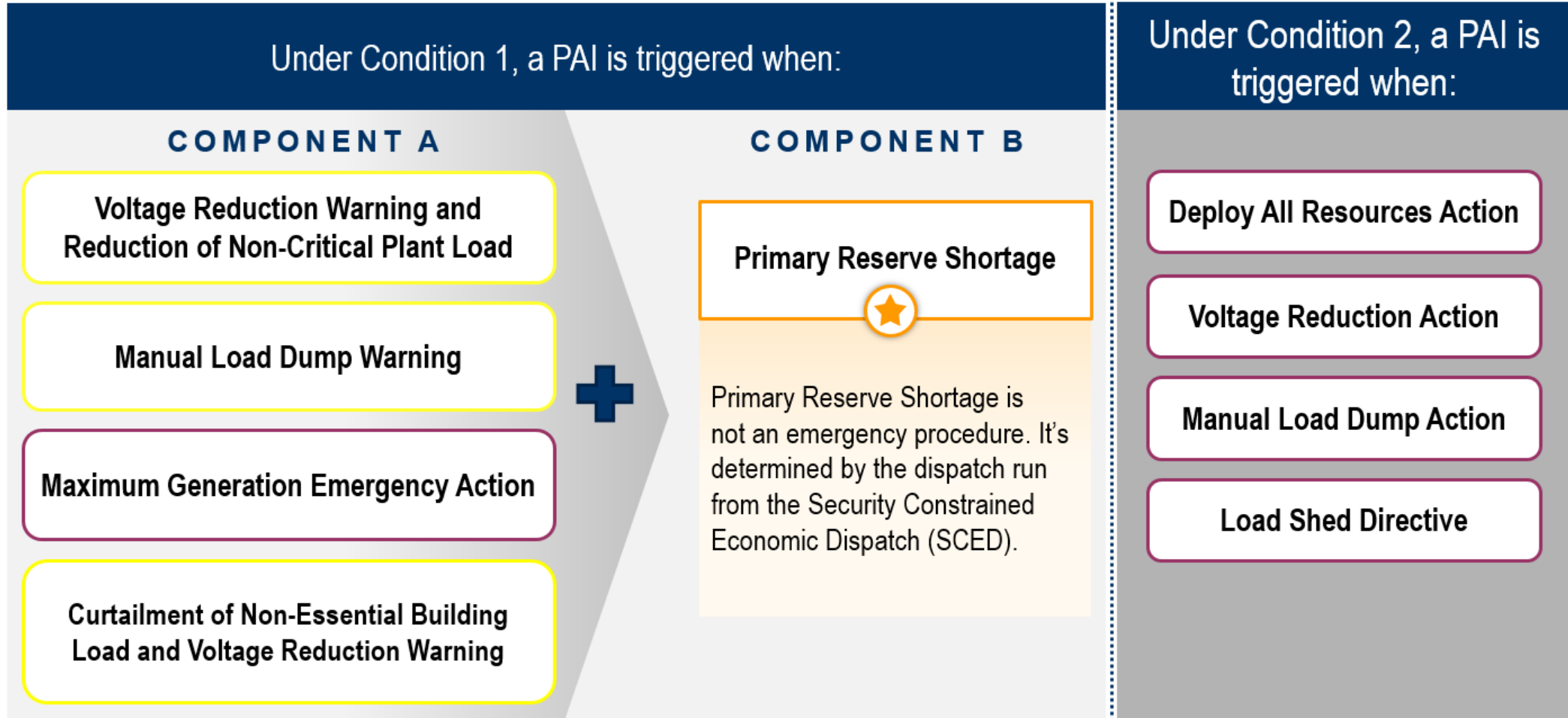
As of November 16, 2023

Action Required	Deadline	Who May Be Affected
Go-Live	12/12/2023	All Stakeholders
Register for education session	12/11/2023	All Stakeholders
Review training materials	N/A	All Stakeholders



- On July 28, 2023, the Commission issued an order accepting the changes to the definition of Emergency Action, for purposes of determining Performance Assessment Intervals (PAI).
 - Docket No. ER23-1996
 - Filed on May 30, 2023
 - Effective date of July 30, 2023
 - Compliance filing August 28, 2023; Accepted October 2, 2023

Emergency Conditions: All Conditions Must Be for Reserve Zone (RTO) or Sub-Zone*



*Current active sub-zone is MAD.

- PAI signal will be communicated via ICCP to participating units via RTSCED
- PJM.com to provide alert based on new PAI trigger
- PJM Now to provide alert setting for PAI and new screen of all issued PAIs from the last 15 days
- New Data Miner feed to provide status for each Real-Time Interval:
 - No PAI
 - PAI in RTO and Active Subzone
 - PAI in Active Subzone Only

- New Data Miner Feed to provide final set of declared PAI intervals
 - PAI Date
 - PAI Datetime Beginning UTC
 - PAI Datetime Beginning EPT
 - PAI Datetime Ending UTC
 - PAI Datetime Ending EPT
 - Area
- Will be posted within 2 business days following an event

*Only the final set of data provided in the Data Miner Feed constitutes PJM's declaration of Emergency Actions for purposes of Performance Assessment Intervals

Facilitator:
Todd Keech, Todd.Keech@pjm.com

Secretary:
Dave Miscavage, Dave.Miscavage@pjm.com

SME/Presenter:
Vijay Shah, Vijay.Shah@pjm.com

Questions: custsvc@pjm.com

PAI – New Trigger Logic



Member Hotline

(610) 666 – 8980

(866) 400 – 8980

custsvc@pjm.com

**PROTECT THE
POWER GRID
THINK BEFORE
YOU CLICK!**



Be alert to
malicious
phishing emails.

Report suspicious email activity to PJM.
(610) 666-2244 / it_ops_ctr_shift@pjm.com



Performance Assessment Interval (PAI) Trigger Matrix

Condition 1 (Component A + Component B): Emergency Procedures and Primary Reserve Shortage (triggered from the latest approved Dispatch Run case on a 5-minute interval basis)

Emergency Procedures Issuance and Reserve Area		Primary Reserve Shortage Issuance (Reserve Area)			
		RTO	MAD Only	RTO and MAD	None
		RESOURCES ASSESSED:			
Voltage Reduction Warning and Reduction of Non-Critical Plant Load	RTO	Entire RTO	All MAD resources assessed	Entire RTO	No assessment
	MAD	No Assessment		All MAD	
Manual Load Dump Warning	RTO	Entire RTO		Entire RTO	
	MAD	No Assessment		All MAD	
Maximum Emergency Generation Action	RTO	Entire RTO		Entire RTO	
	MAD	No Assessment		All MAD	
Voltage Reduction Warning and Curtailment of Non-Essential Building Load	RTO	Entire RTO		Entire RTO	
	MAD	No Assessment		All MAD	

Condition 2: Emergency Procedures

Emergency Procedures Issuance and Reserve Area		Resources Assessed
MAD	Deploy All Resources Action	MAD resources assessed
	Voltage Reduction Action	
	Manual Load Dump Action	
	Load Shed Directive	
RTO	Deploy All Resources Action	Entire RTO resources assessed
	Voltage Reduction Action	
	Manual Load Dump Action	
	Load Shed Directive	

Notes:

- Determination of shortage conditions is subject to the Real-Time LMP Verification process following the operating day.
- The list of currently effective MAD resources can be found using the following link: <https://www.pjm.com/-/media/markets-ops/ancillary/reserve-price-formation/mid-atlantic-dominion-subzone-bus-and-resource-list-effective-20221207.ashx>. **NOTE:** All RPM capacity committed resources have an obligation to respond and are subject to assessment.
- The above list under Conditions 1 & 2 is inclusive of all potential Emergency Procedures that could trigger a PAI. Any other Emergency Procedures (including, but not exclusive to Primary Reserve Alert, Maximum Generation Emergency/Load Management Alert, etc.) **are not** PAI triggers.

- Manual 11, Section 2.19 Notification of a Performance Assessment Interval (New Section)
 - Describes that the initial notification of a PAI will be based on a Primary Reserve Shortage condition from the dispatch run solution
 - Provides guidance on how the indication of a potential PAI will be communicated
- Manual 13, Section 2.3.2 and 5.2
 - Modified or deleted notes regarding PAI
- Manual 18, Section 8.4A Non-Performance Assessment
 - Provides updated guidance on what would trigger a Performance Assessment Interval (PAI) and which resources would be subject to assessment