

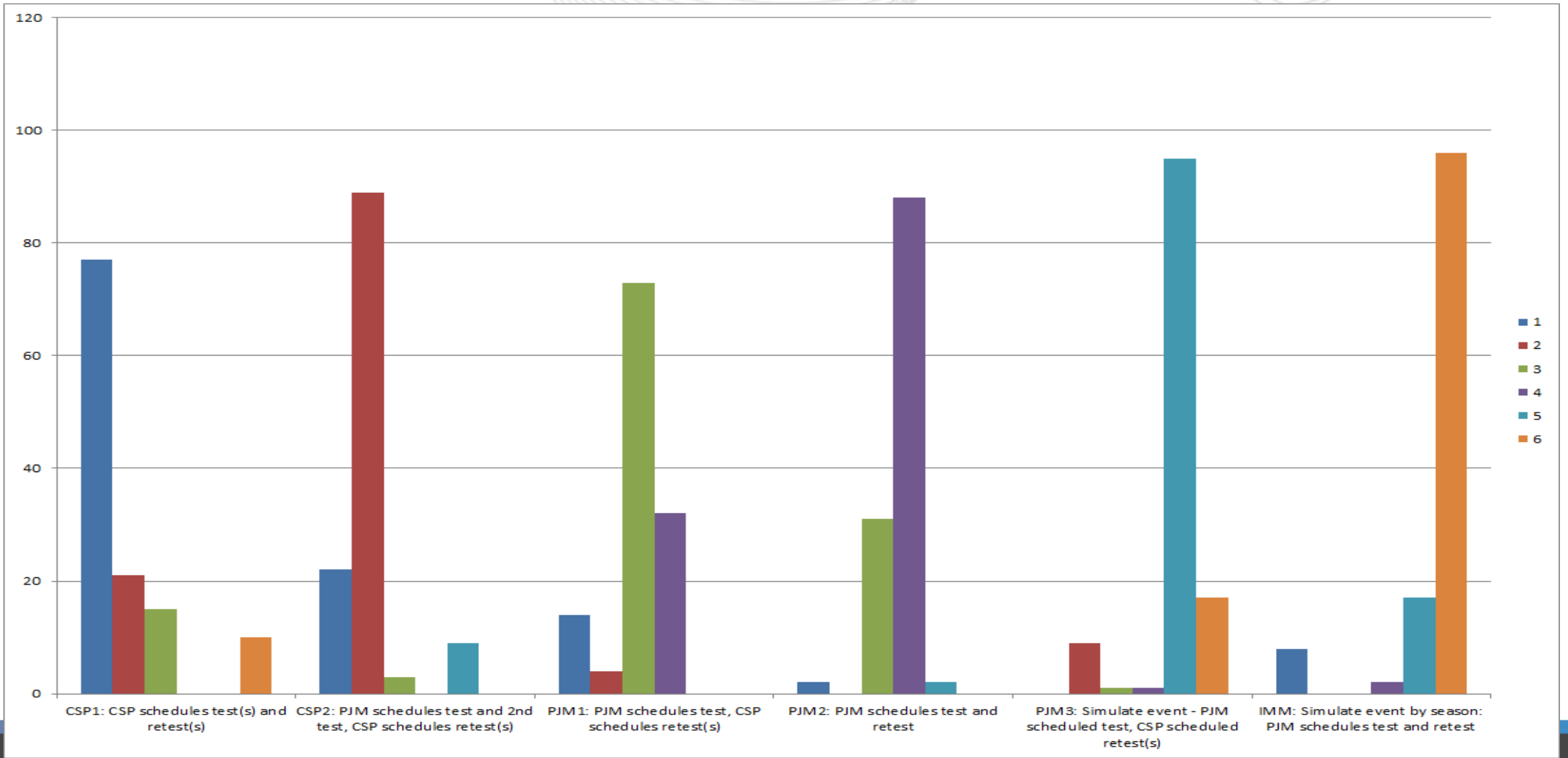
Load Management Test Proposals – Poll Results

DRS
7/1/19

Total Unique Responders:		30
Total Companies Respresented:		123
Voting Members		38
Affiliate members		81
Ex Officio Members		4

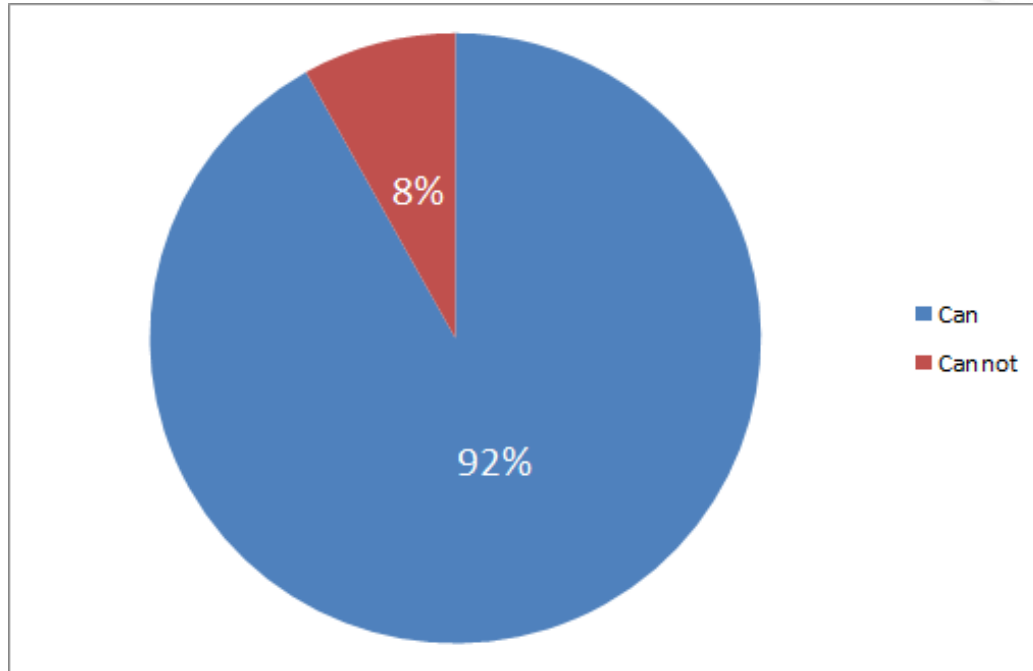
Short turn around for poll

Please rank each package using 1 for your favorite, and 6 for your least favor

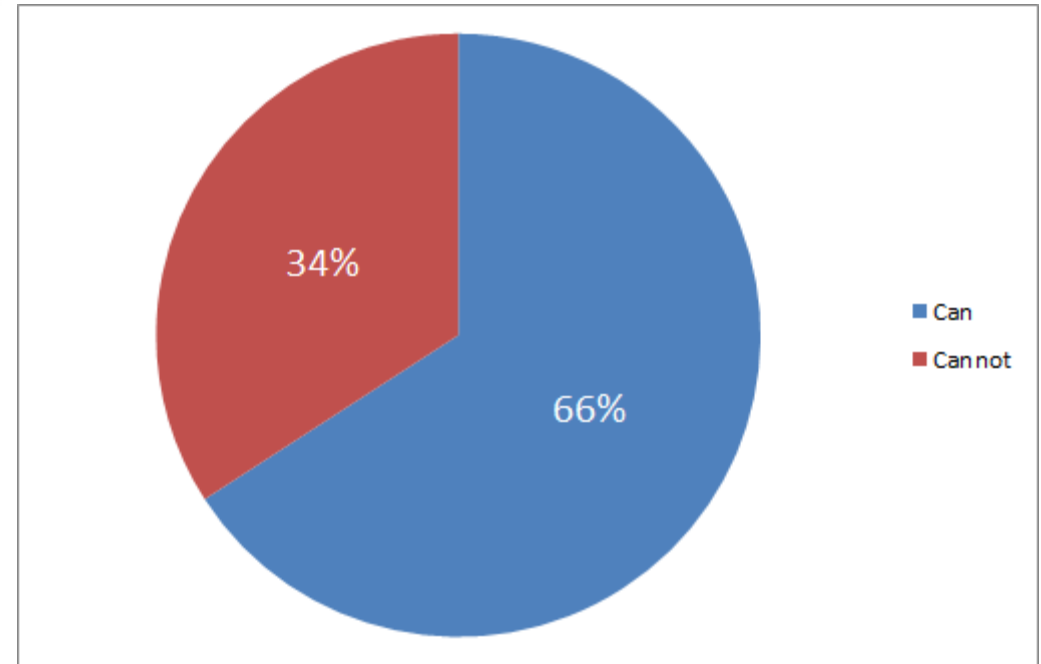


Please indicate which package(s) you can live with moving forward in the stakeholder process?

CSP1: CSP schedules test(s) and retest(s)

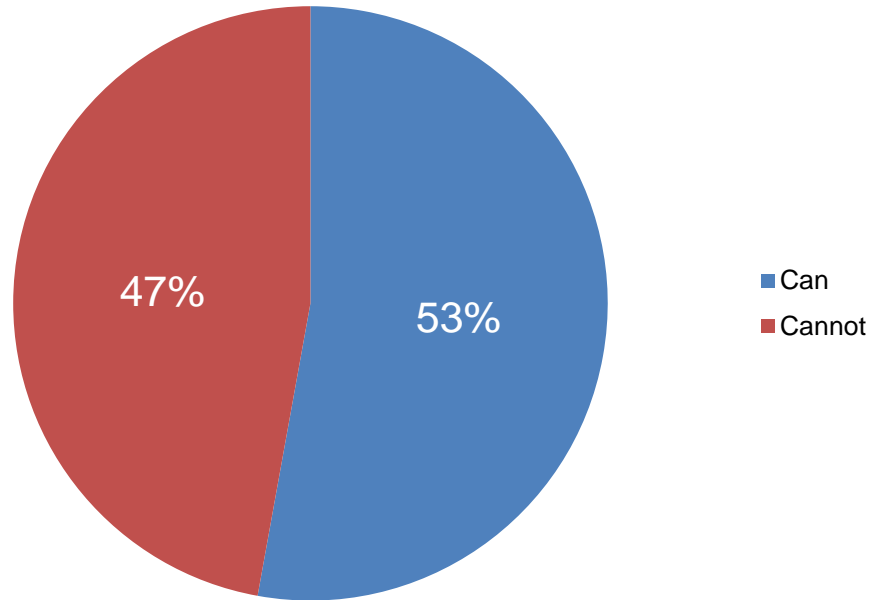


CSP2: PJM schedules test and 2nd test, CSP schedules retest(s)

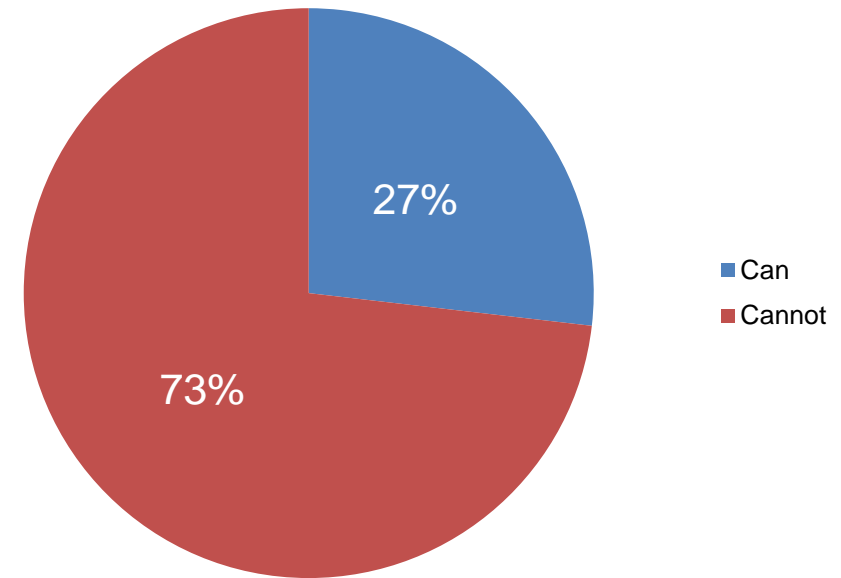


Please indicate which package(s) you can live with moving forward in the stakeholder process?

PJM1: PJM schedules test, CSP schedules retest(s)



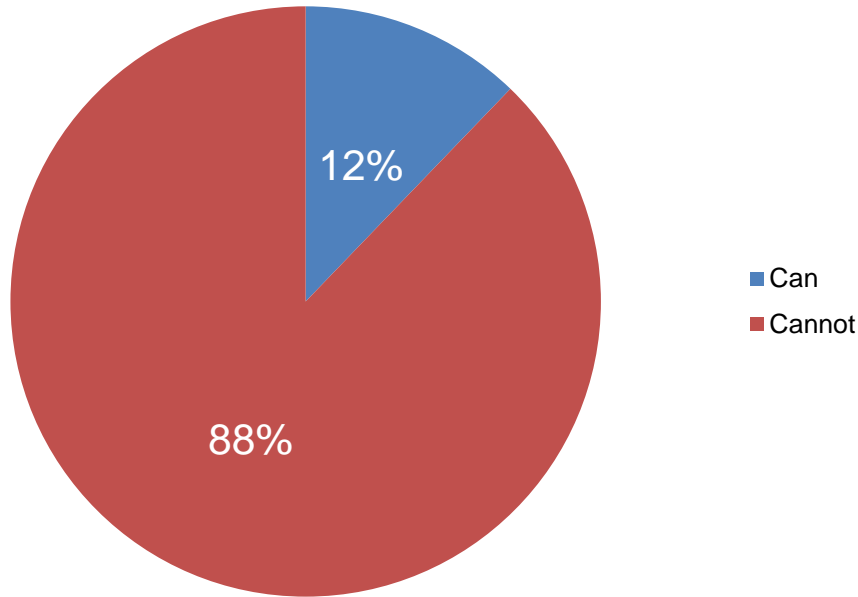
PJM2: PJM schedules test and retest



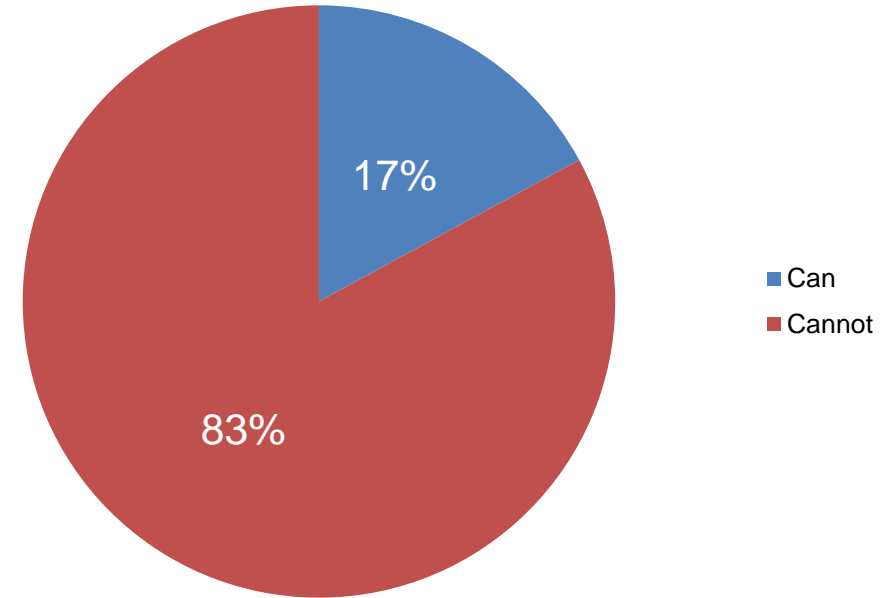


Please indicate which package(s) you can live with moving forward in the stakeholder process?

PJM3: Simulate event - PJM scheduled test, CSP scheduled retest(s)

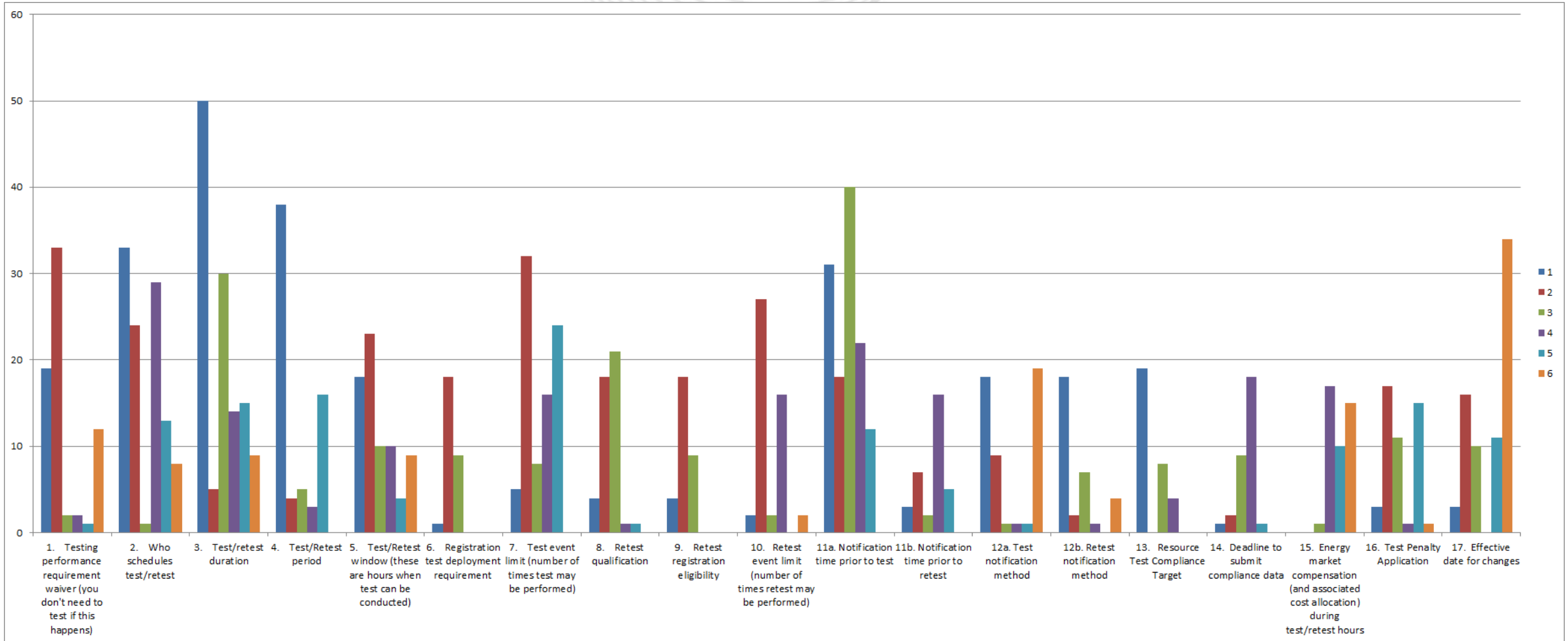


IMM: Simulate event by season: PJM schedules test and retest

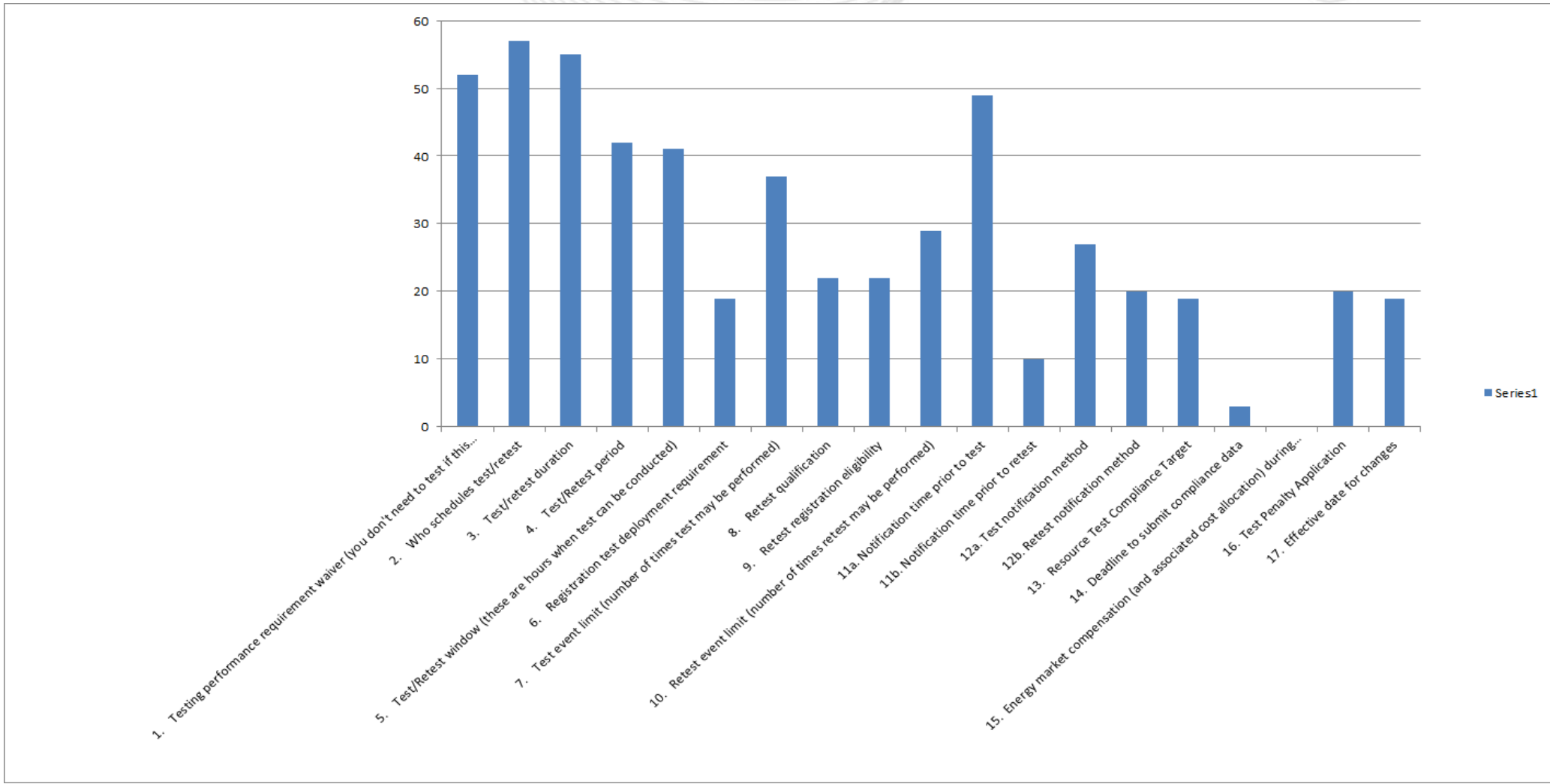




What 6 components are most important to you. Please rank them from 1 to 6 (where 1 is the most important component of the 6)?

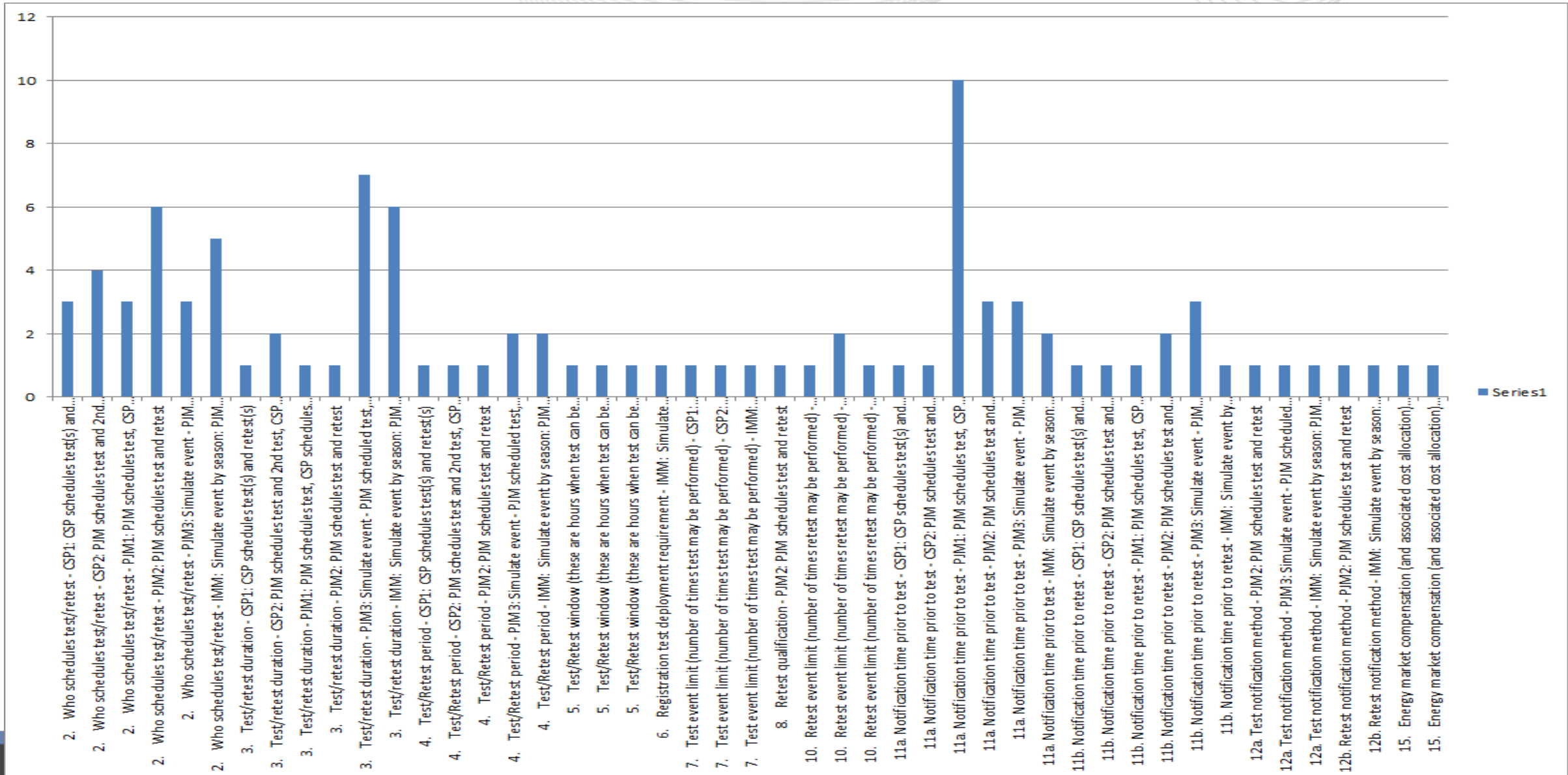


Top Box summary (top 2 important components – rank 1 or 2)



- For package(s) you CANNOT live with (these are the packages you DID NOT select in the previous question), is there 1 solution component change that will allow you to NOT reject the package? If yes, please indicate which solution component. Please add your recommended change so that you can live with the package to the associated package comment field. For example, if you cannot live with PJM3 proposal because Testing may occur on weekends then please indicate in the table below under component 4 (Test/Retest period), and add your recommended change to the PJM3 Proposal comments line at the end of the question:

Proposal components that would need a change to enable stakeholders to live with proposal





From 1 to 4, please rank the importance of the different solutions for the “Notification time prior to test” (component 11a).
Where 1 is the most important solution of the 4:

