

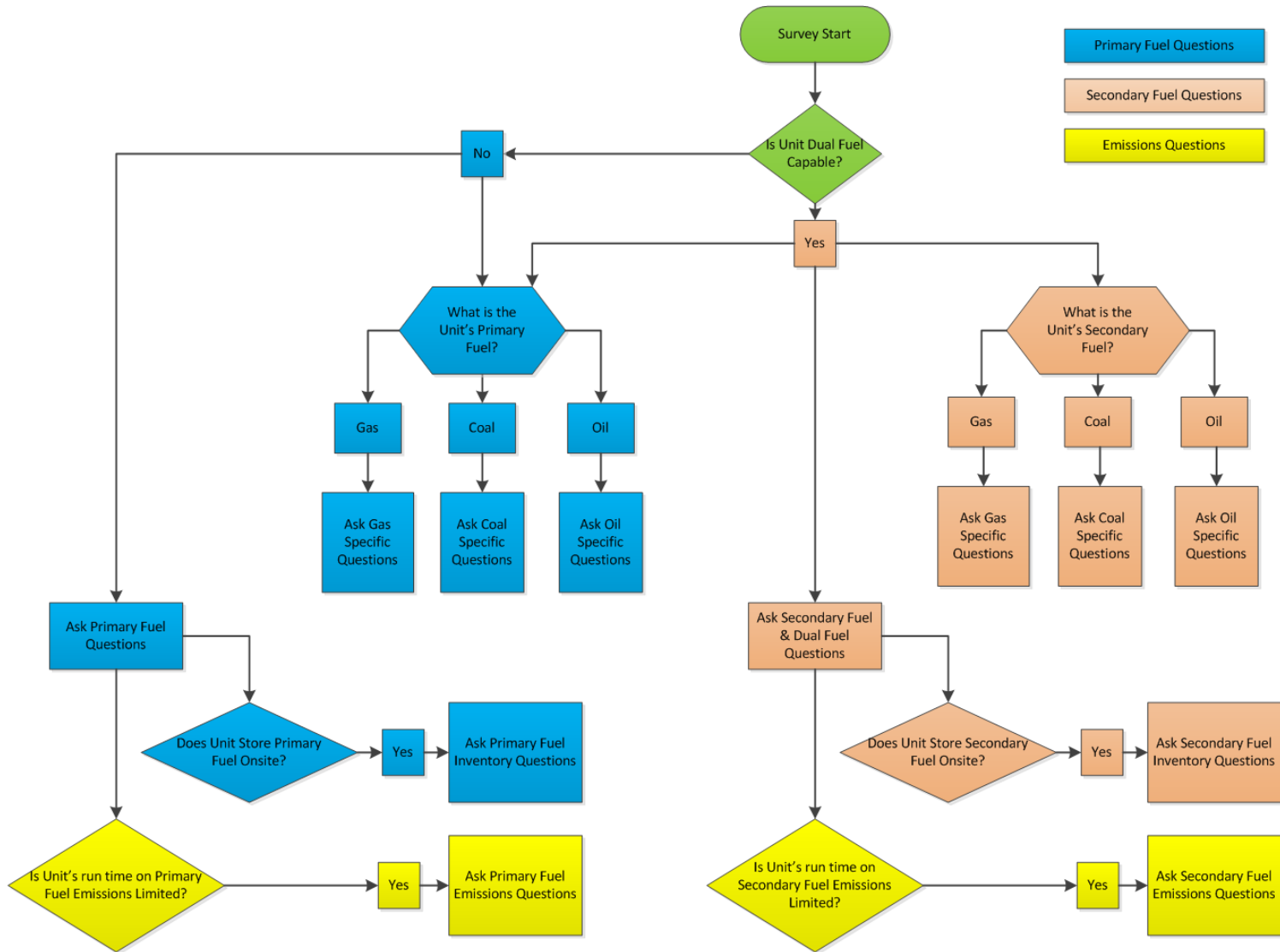


# Seasonal Fuel Survey

Ray Lee  
Generation Department  
9/7/2017 SOS



- Required for reliable operations planning purposes
- Done as a baseline of fuel supply and reserves ahead of winter season
- Intended to enhance PJM situational awareness in preparation for severe weather
- Primary focus on three subsets of data:
  - Fuel Inventory
  - Fuel Supply
  - Emissions limitations



Survey-related enhancements available in eDART <b>sandbox</b>	eDART fall release - includes survey-related <b>enhancements</b>	Fuel survey available - notification sent to <b>GO eDART contacts</b>	Fuel survey responses <b>due in eDART</b>
<b>9/15/17</b>	<b>9/27/2017</b>	<b>10/13/2017</b>	<b>11/17/2017</b>
Allows eDART users to get more familiar with survey functionality	New functionality includes: enhanced download and upload capability and ability to save partially completed responses	Survey data "pre-populated" where possible, based on 2016 responses	All data should be uploaded or manually entered into eDART by COB on 11/17

- eDART User Group (eDUG) Concerns
  - Limited preparation time due changing or reordering of questions
  - Inability to save partially completed surveys
  - XML file is difficult to read and organize to be sent to plant operators for responses
- PJM has developed enhancements to the Fuel Survey through collaboration with the eDUG.
- Enhancements targeted to be complete by 2017 Q3. Note some enhancements were completed in 2017 Q2.

- Previously members were unable to save partially completed surveys which resulted in the loss of work if the full response was not submitted to PJM.
- Members are now able to save partial responses and submit to PJM when unit survey is complete.



- Pre-populated fuel survey downloads available as of eDART Q2 release on 6/26/2017
- Download consists a zip file containing 2 tab delimited text files which can be opened/modified in Microsoft Excel
  - 1<sup>st</sup> file contains questions, question help, and answer selections
  - 2<sup>nd</sup> file contains unit answers (pre-populated from prior surveys)
- The 1<sup>st</sup> and 2<sup>nd</sup> files can be related by the question Index IDs, and can easily be combined into a single document in Excel by copying and pasting the contents of the 2<sup>nd</sup> file into the 1<sup>st</sup> file if desired.

- Zip file containing tab delimited text files can be downloaded by clicking Download TXT

GO Survey									
Survey ID	Survey Name	Note	Start Date	End Date	Number of Units Total	Number of Units Answered	Files	Upload XML	Download
500	GO Survey for Fuel	PJM Members should complete this survey.	10/25/2016	12/16/2016	15	27			<a href="#">Download XML</a> <a href="#">Download TXT</a>

[Unit Questions](#) [Refresh](#) [GO Main Menu](#)



## Question Text File

## Unit Answers Text File

Question Text File											Unit Answers Text File					
Survey ID	500										Survey ID	500				
											Company	XXX	UNIT ID	111	222	
													UNIT NAME	A	B	
													TA ID	111	222	
INDEX ID	QUESTION TEXT	QUESTION HELP	DATA TYPE	MIN VALUE	MAX VALU	DROP DOWN VALUES	GO LEVE	GEN TYP	FUEL TYF	DUAL FUE	REQUIRE	INDEX ID	GO LEVE	EQUIPMENT NAME	UNIT 1	UNIT 2
FQ-1	Is this unit both capable and ava	Dual Fuel capable units tl	Drop Down			Yes, No		N/A		N/A	Yes	FQ-1			No	No
FQ-2	What is this unit's Primary Fuel Category?		Drop Down			Coal, Oil, Gas, Other		N/A		N/A	Yes	FQ-2			Coal	Coal
FQ-3	What is this unit's Secondary Fu	Response required only il	Drop Down			Coal, Oil, Gas, Other		N/A		N/A	No	FQ-3				
FQP-0	Please select your primary fuel type from the drop down bo		Drop Down			Coal, Special, Coal, Meta-Anthrac		N/A	N/A	Primary	Yes	FQP-0			Coal, Bitumii	Coal, Bitumir
FQP-F1	Do you store primary fuel onsite? If no, select No and skip ti		Drop Down			No, Yes		N/A	N/A	Primary	Yes	FQP-F1			Yes	Yes
FQP-F2	Is the primary fuel onsite shared I	Response required only il	Drop Down		0	No, Yes		N/A	N/A	Primary	No	FQP-F2			Yes	Yes
FQP-F3	If yes to question FQP-F2, how r	Response required only il	Number		-1			N/A	N/A	Primary	No	FQP-F3				
FQP-F4	Based on current onsite useable	Response required only il	Number		-1			N/A	N/A	Primary	No	FQP-F4				
FQP-F5	What is the primary transportatio	Response required only il	Drop Down			Other, Barge, Tanker, Train, Truck		N/A	N/A	Primary	No	FQP-F5			Barge	Barge
FQP-F6	How much time (in hours) does it	Response required only il	Number					N/A	N/A	Primary	No	FQP-F6			40	40

↑ ↑  
1 Unit Per Column

- Members will be able to upload updated unit answers directly into eDART w/o having to enter each value individually via the current web user interface.
- Members will be able upload survey data unit by unit, groups of units, or by fleets.
- Members should only upload the modified unit and answer file.
- Target Implementation date is Q3 eDART release on 9/27/2017

- Upload file should only contain unit and answers per example below

Unit and Answer File Only

Survey ID	500			
Company	XXX	UNIT ID	111	222
		UNIT NAME	A	B
		TA ID	111	222
INDEX ID	GO LEVE	EQUIPMENT NAME	UNIT 1	UNIT 2
FQ-1			No	No
FQ-2			Coal	Coal
FQ-3				
FQP-0			Coal , Bitumin	Coal , Bitumin
FQP-F1			Yes	Yes
FQP-F2			Yes	Yes
FQP-F3				
FQP-F4				
FQP-F5			Barge	Barge
FQP-F6			40	40

GO Survey										
Survey ID	Survey Name	Note	Start Date	End Date	Number of Units Total	Number of Units Answered	Units to Follow Up	Files	Upload File	Download
500	GO Survey for Fuel	PJM Members should complete this survey.	10/13/2016	12/31/2017	102	11	0	21	Upload File	<a href="#">Download XML</a> <a href="#">Download TXT</a>

Ray Lee

Generation Department

[Ray.Lee@pjm.com](mailto:Ray.Lee@pjm.com)

610-666-4608

Augustine Caven

Generation Department

[Augustine.Caven@pjm.com](mailto:Augustine.Caven@pjm.com)

610-666-8200