

Energy Uplift Allocation Proposal

Energy Market Uplift
Senior Task Force

April 17, 2015

Joel Romero Luna



Monitoring Analytics

Objectives

- **Maintain/improve current incentives.**
- **Allocate charges to transactions that have impact on commitment and dispatch.**
- **Preserve current timing and regional signals.**
- **Simplify reliability vs. deviation logic.**



Legend

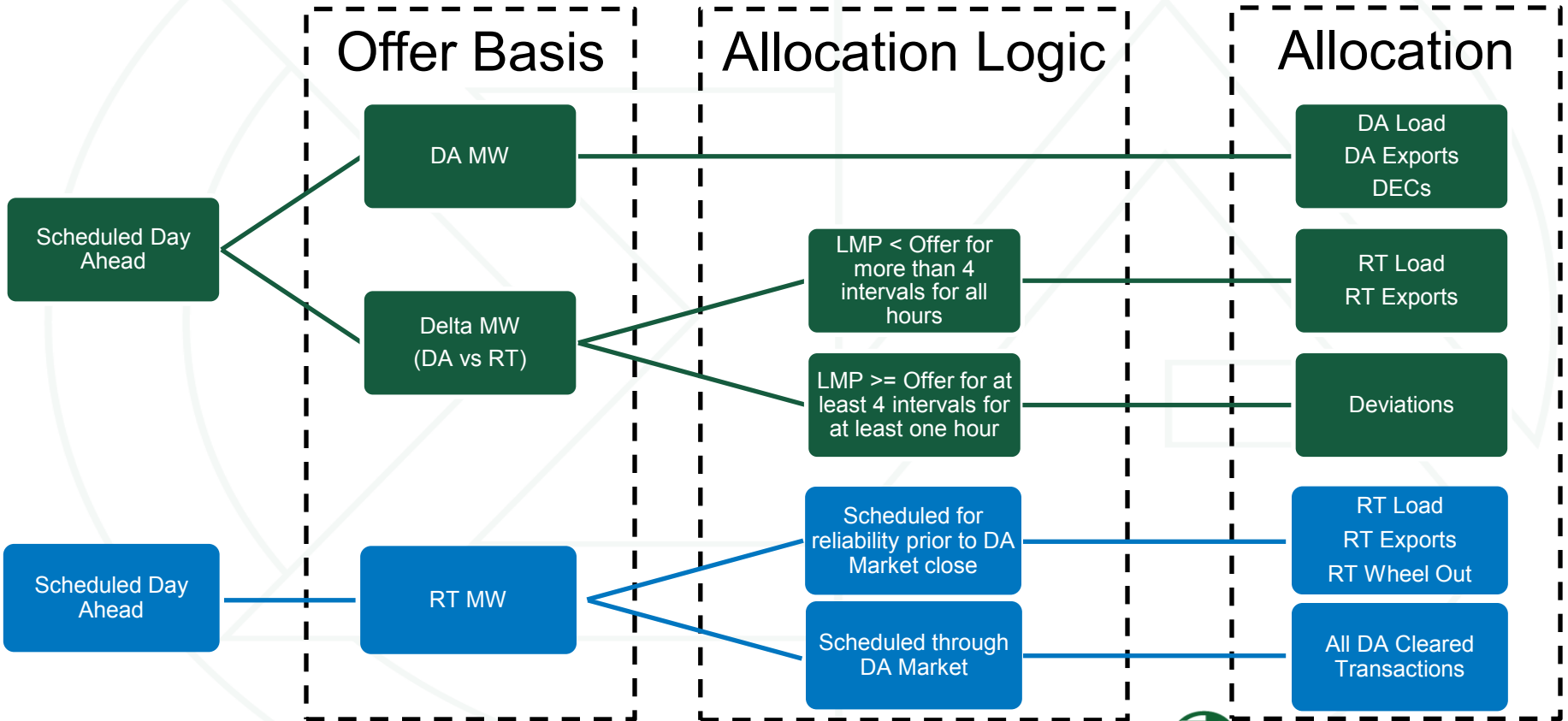
Status Quo

MMU Proposal

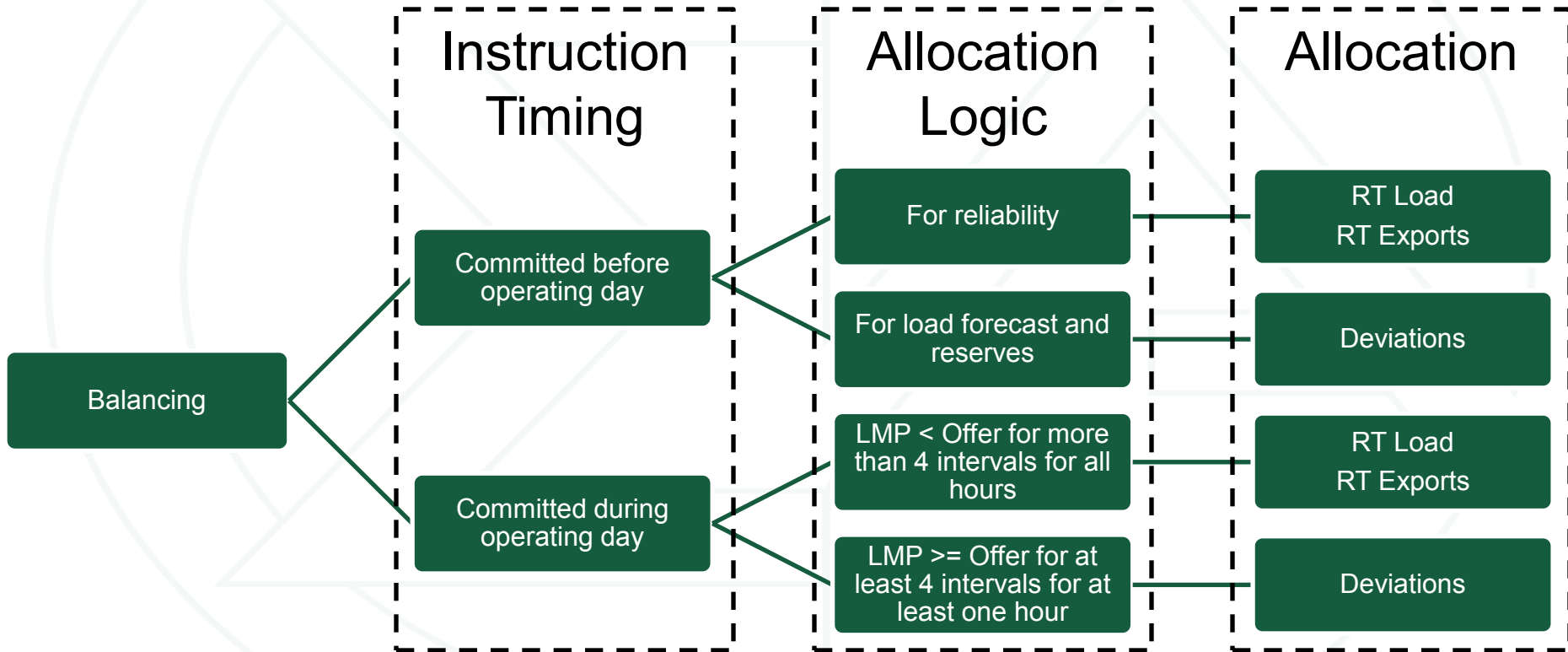
Terms:

- **Make Whole:** Payments to resources asked to run/keep running and offer $>$ revenues.
- **LOC:** Payments to units asked to reduce, or scheduled DA not committed in RT and offer $<$ LMP.
- **Energy uplift = Make Whole + LOC**

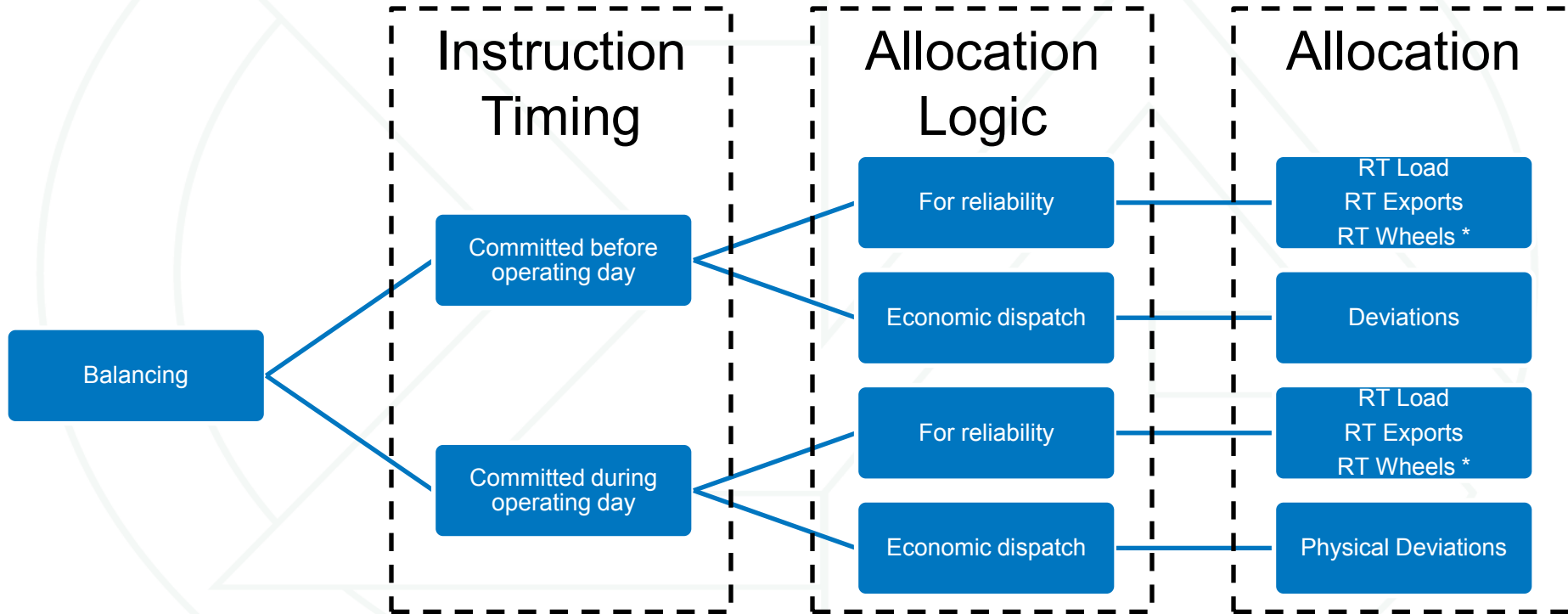
Make Whole to Units Scheduled DA



Make Whole to Units Committed RT not Scheduled DA

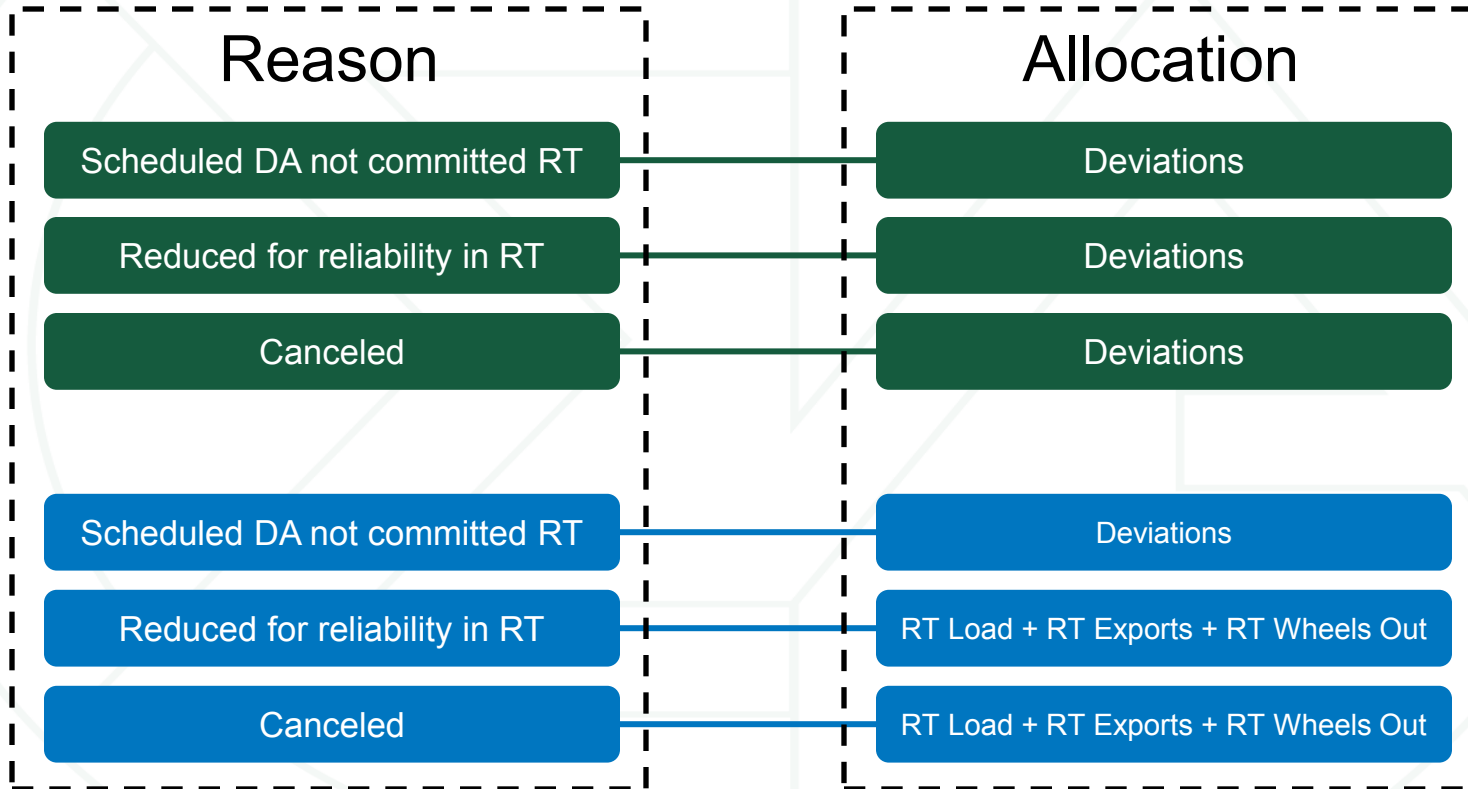


Make Whole to Units Committed RT not Scheduled DA



* Wheels transactions are accounted only for their withdrawal side.

LOC and Canceled Resources



Deviations Status Quo

Deviations		
Day-Ahead		Real-Time
Day-Ahead Demand Bid	Demand (Withdrawal)	Real-Time Load
Day-Ahead Bilateral Sales	(RTO, East, West)	Real-Time Bilateral Sales
Day-Ahead Export Transactions		Real-Time Export Transactions
Decrement Bids		
Day-Ahead Bilateral Purchases	Supply (Injection)	Real-Time Bilateral Purchases
Day-Ahead Import Transactions	(RTO, East, West)	Real-Time Import Transactions
Increment Offers		
Generators/DR not following dispatch		

Deviations Proposal

Deviations		
Day-Ahead		Real-Time
Day-Ahead Demand Bid Day-Ahead Bilateral Sales Day-Ahead Export Transactions Decrement Bids Day-Ahead Wheel Transactions (Withdrawal Side) Up-To Congestion Transactions (Withdrawal Side)	Demand (Withdrawal) (RTO, East, West)	Real-Time Load Real-Time Bilateral Sales Real-Time Export Transactions Real-Time Wheel Transactions (Withdrawal Side)
Day-Ahead Bilateral Purchases Day-Ahead Import Transactions Increment Offers Day-Ahead Wheel Transactions (Injection Side) Up-To Congestion Transactions (Injection Side)	Supply (Injection) (RTO, East, West)	Real-Time Bilateral Purchases Real-Time Import Transactions Real-Time Wheel Transactions (Injection Side)
Generators/DR not following dispatch		

Add DASR resources that do not perform. Using current DASR eligibility rules



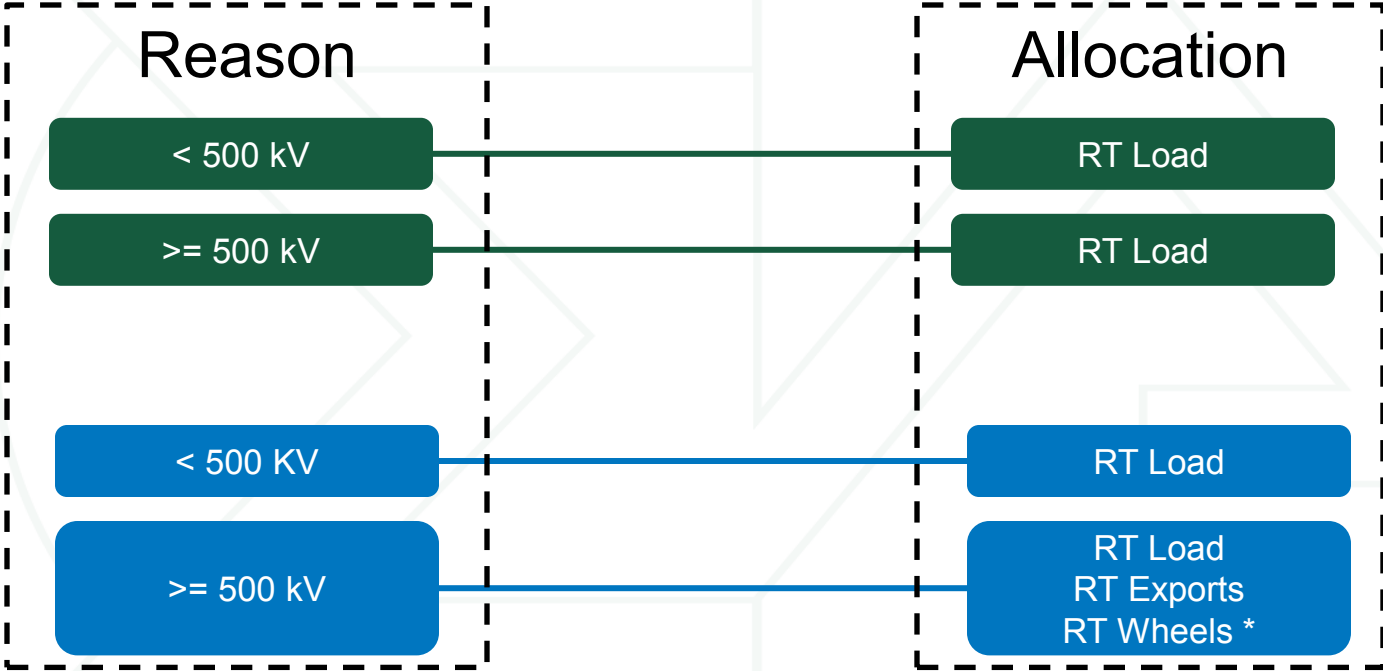
Deviation Proposal

Physical Deviations	
Day-Ahead	Real-Time
Day-Ahead Demand Bid	Real-Time Load
Day-Ahead Export Transactions	Real-Time Export Transactions
Day-Ahead Import Transactions	Real-Time Import Transactions
Day-Ahead Wheel Transactions	Real-Time Wheel Transactions

Generators/DR not following dispatch

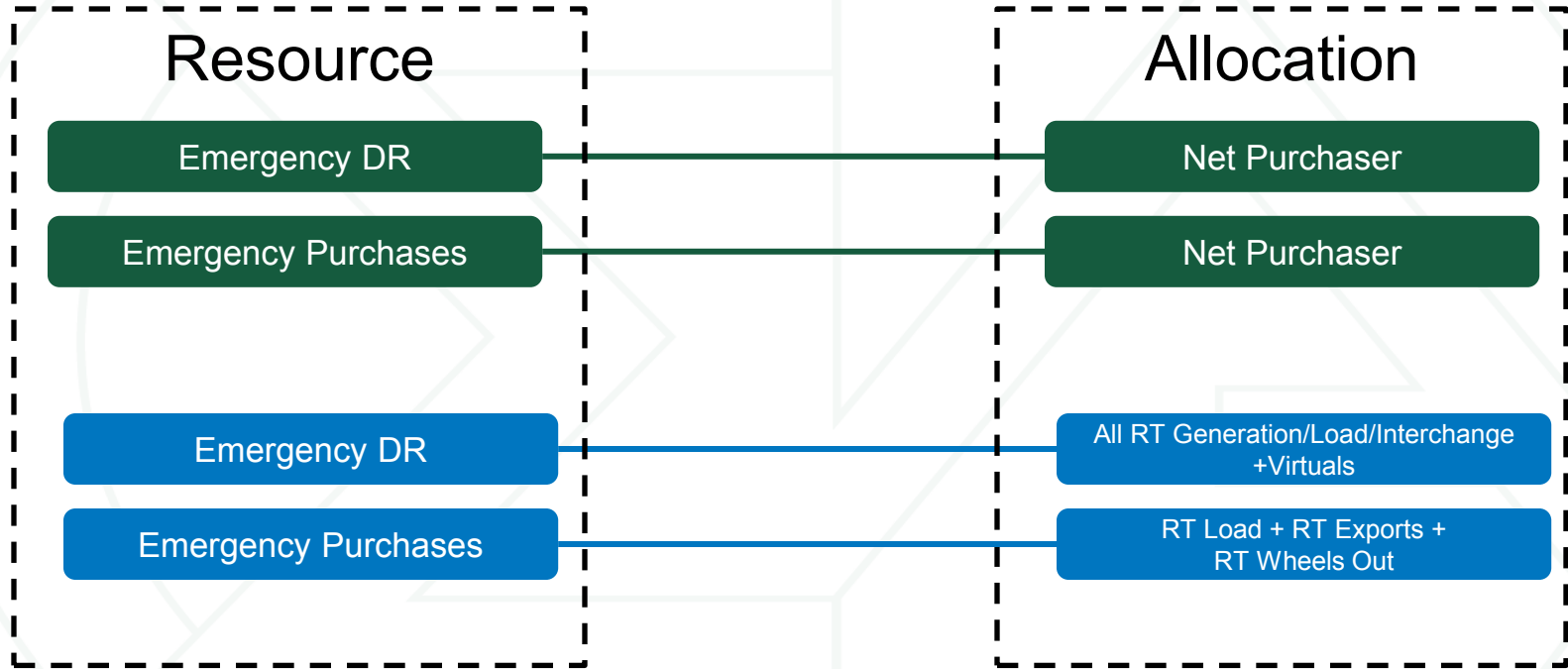
Add DASR resources that do not perform.
Using current DASR eligibility rules

Reactive



* Wheels transactions are accounted only for their withdrawal side.

Emergency DR / Purchases



Other Allocations

- **Negative Balancing Congestion:**
 - **Current: DA Load, DA Exports, DECs**
 - **Proposal: FTRs**



Conclusion

- **Improve allocation based on commitment timing.**
- **No day-ahead operating reserve credits/charges.**
- **No day-ahead demand transactions bucket.**
- **No offer vs. LMP / deviation vs. reliability logic.**
- **Expansion of the current deviation bucket.**
- **New physical deviation bucket.**
- **Maintain regional separation only when unit commitment/dispatch can be mapped to a transmission line(s), otherwise, RTO wide allocation is preferred.**



Monitoring Analytics, LLC

2621 Van Buren Avenue

Suite 160

Eagleview, PA

19403

(610) 271-8050

MA@monitoringanalytics.com

www.MonitoringAnalytics.com

