



Maddox Creek to Southwest Lima 345kV  
New Transmission Line  
November 15, 2016

The enclosed information is proprietary to PSE&G and is provided solely for your use.  
It should not be copied, reproduced, or shared with others without PSE&G's prior written consent.

## Table of Contents

<b>1. Executive Summary.....</b>	<b>4</b>
<b>2. Company Evaluation.....</b>	<b>5</b>
2.1. Contact Information.....	5
2.1.1. Primary Contact.....	5
2.1.2. Secondary Contact.....	5
2.1.3. Headquarters.....	5
2.2. Pre-Qualification.....	5
2.3. Company Information.....	5
<b>3. Constructability Information.....</b>	<b>12</b>
3.1. Scope of Project.....	12
3.2. Cross-Border Issues.....	12
3.3. Proposal Elements.....	12
3.3.1. General Description.....	12
3.3.2. Geographic Description.....	12
3.3.3. Route Description.....	12
3.3.4. Physical Characteristics.....	17
3.3.5. Map and Supporting Diagram.....	17
3.3.6. Interconnection Location.....	19
3.3.7. Outage Requirements.....	19
3.3.8. Cost.....	19
3.3.9. Construction Responsibility.....	20
<b>4. Analytical Assessment.....</b>	<b>21</b>
4.1. Analysis.....	21
4.2. Equipment Parameters and Assumptions.....	22
4.3. PSS/E IDEV Files.....	22
4.4. Supporting Information.....	22
4.5. Proposal Template Spreadsheet.....	22
4.6. Market Efficiency.....	22
<b>5. Cost.....</b>	<b>23</b>
5.1. Cost Estimate.....	23
5.1.1. Total Cost.....	23
5.1.2. Yearly Cash Flow.....	23
5.1.3. Escalation Rates.....	23
5.2. Detailed Breakdown of Cost.....	23

## New Transmission Line

Maddox Creek to Southwest Lima 345kV

---

5.2.1. Planned Return on Equity .....	24
5.2.2. Estimated Monthly AFUDC.....	24
5.2.3. Annual O&M Cost.....	24
5.3. Cost Commitment .....	24
<b>6. Schedule.....</b>	<b>25</b>
<b>7. Operations/Maintenance.....</b>	<b>27</b>
7.1. Overview.....	27
7.1.1. Previous Experience.....	27
7.1.2. Intentions for Control Center.....	28
7.1.3. Maintenance Contracts .....	28
<b>8. Assumptions.....</b>	<b>29</b>
8.1. General.....	29
8.2. Permitting.....	29
8.3. Project Duration .....	29
8.4. Cost.....	29

*Note: Supporting files (PSS/E IDEV, Case, and Contingency Files) were submitted electronically on October 31, 2016.*

## New Transmission Line

Maddox Creek to Southwest Lima 345kV

---

### 1. Executive Summary

- The proposing entity is Public Service Electric and Gas Company (PSE&G).
- This proposal is submitted in response to PJM's 2016 RTEP Proposal Window 3.
- The violation was identified in the winter generation deliverability analyses.
- No additional violations are caused by the solution presented in this proposal. There are no nearby violations not addressed by this proposal.
- The proposed project is located within the AEP zone.
- PSE&G seeks Designated Entity Status to construct, own, operate, and maintain the proposed project.
- The following proposes a solution to a winter generation deliverability violation: Flowgate 123.
- This project should be considered only as a whole.
- The proposed project cost is approximately (without Risk & Contingency).
- The project duration is approximately 4 years.
- The Maddox Creek to Southwest Lima 345kV transmission line proposal will provide additional capacity for the system and more outlets for wind generation.

## New Transmission Line

Maddox Creek to Southwest Lima 345kV

---

## 2. Company Evaluation

### 2.1. Contact Information

#### 2.1.2. Secondary Contact

#### 2.1.3. Headquarters

PSEG

80 Park Plaza

Newark, New Jersey 07102

(973) 430-7000

### 2.2. Pre-Qualification

### 2.3. Company Information

## New Transmission Line

Maddox Creek to Southwest Lima 345kV

---

## New Transmission Line

Maddox Creek to Southwest Lima 345kV

---

## New Transmission Line

Maddox Creek to Southwest Lima 345kV

---



**New Transmission Line**  
Maddox Creek to Southwest Lima 345kV

---



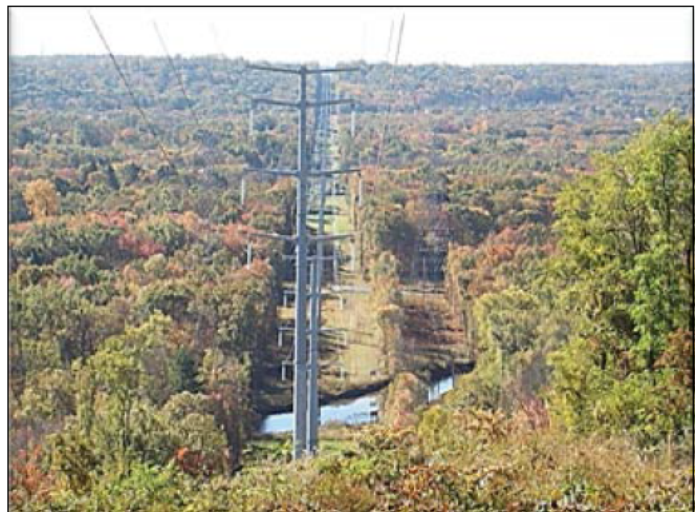
Mickleton-Gloucester-Camden Project



Susquehanna Roseland Project



Burlington-Camden Upgrade



North Central Reliability Project

## New Transmission Line

Maddox Creek to Southwest Lima 345kV

---



## **New Transmission Line**

Maddox Creek to Southwest Lima 345kV

---

### **3. Constructability Information**

#### **3.1. Scope of Project**

The proposal includes the installation of an approximately 28-mile 345kV overhead transmission line from the existing Maddox Creek to the existing Southwest Lima station.

#### **3.2. Cross-Border Issues**

The following proposal is not a solution to Cross-Border issues.

#### **3.3. Proposal Elements**

##### **3.3.1. General Description**

The proposal includes the installation of an approximately 28-mile 345kV overhead transmission line from the existing Maddox Creek to the existing Southwest Lima station.

##### **3.3.2. Geographic Description**

##### **3.3.3. Route Description**

## New Transmission Line

Maddox Creek to Southwest Lima 345kV

---

**New Transmission Line**

Maddox Creek to Southwest Lima 345kV

---

## New Transmission Line

Maddox Creek to Southwest Lima 345kV

---

### 3.3.3.1. Environmental Impacts

**3.3.3.2. Right-of-way and Land Acquisition Plan and Approach**  
Land acquisition is anticipated for this project.

### 3.3.3.3. Permitting Plan and Approach

## New Transmission Line

Maddox Creek to Southwest Lima 345kV

---

### 3.3.3.4. Potential Public Opposition



## **New Transmission Line**

Maddox Creek to Southwest Lima 345kV

---

### **3.3.4. Physical Characteristics**

- **Line and shield conductor type and size:**
- **Overhead or underground/submarine:** Overhead
- **Single or double circuit towers:** Single Circuit

### **3.3.5. Map and Supporting Diagram**

## New Transmission Line

Maddox Creek to Southwest Lima 345kV

---

## New Transmission Line

Maddox Creek to Southwest Lima 345kV

---

### 3.3.6. Interconnection Location

### 3.3.7. Outage Requirements

Outages will be required for construction at the existing Maddox Creek and Southwest Lima stations. PSE&G will coordinate with the incumbent transmission owners to determine the length and timing of the outages.

### 3.3.8. Cost

## New Transmission Line

Maddox Creek to Southwest Lima 345kV

---

### 3.3.9. Construction Responsibility

PSE&G will construct the Maddox Creek to Southwest Lima 345kV transmission line. Modifications to the existing Maddox Creek and Southwest Lima stations are assumed to be constructed by the incumbent transmission owners. PSE&G seeks Designated Entity Status to construct, own, operate, and maintain the proposed project.

## New Transmission Line

Maddox Creek to Southwest Lima 345kV

---

### 4. Analytical Assessment

#### 4.1. Analysis

## **New Transmission Line**

Maddox Creek to Southwest Lima 345kV

---

### **4.2. Equipment Parameters and Assumptions**

### **4.3. PSS/E IDEV Files**

PSS/E IDEV files were submitted electronically on October 31, 2016.

### **4.4. Supporting Information**

A thermal overload in AEP's territory was identified in the 2016 RTEP's Winter Generation Deliverability study. The thermal overload on the Maddox Creek to East Lima 345kV line occurs with an outage of the regional Sorenson to Marysville 765kV line. To alleviate the overload and improve system reliability, a new 345kV line is being proposed.

### **4.5. Proposal Template Spreadsheet**

The final RTEP Proposal Template spreadsheet (in Excel format) is provided electronically as a separate file.

### **4.6. Market Efficiency**

This section is not applicable to this proposal.

## **New Transmission Line**

Maddox Creek to Southwest Lima 345kV

---

### **5. Cost**

#### **5.1. Cost Estimate**

##### **5.1.1. Total Cost**

##### **5.1.2. Yearly Cash Flow**

##### **5.1.3. Escalation Rates**

#### **5.2. Detailed Breakdown of Cost**

## New Transmission Line

Maddox Creek to Southwest Lima 345kV

---

5.2.1. Planned Return on Equity

5.2.2. Estimated Monthly AFUDC

5.2.3. Annual O&M Cost

5.3. Cost Commitment



## New Transmission Line

Maddox Creek to Southwest Lima 345kV

---

### 6. Schedule



## New Transmission Line

Maddox Creek to Southwest Lima 345kV

---

### 7. Operations/Maintenance

#### 7.1. Overview

##### 7.1.1. Previous Experience

## New Transmission Line

Maddox Creek to Southwest Lima 345kV

---

7.1.2. Intentions for Control Center

7.1.3. Maintenance Contracts

**New Transmission Line**

Maddox Creek to Southwest Lima 345kV

---

**New Transmission Line**

Maddox Creek to Southwest Lima 345kV

---